

凌科自动化

SRX MT

S

SMART

MODBUS TCP/IP S7-200SMART SRX-MT



SRX-MT	S7-200SMART	- 1 -
1. SRX-MT		- 4 -
2.		- 4 -
3.		- 4 -
3.1		- 4 -
3.2	IP	- 4 -
3.2.1	LAEConfig	- 4 -
3.2.2		- 4 -
3.2.3	IP	- 5 -
3.2.4		- 5 -
3.2.5		- 6 -
3.3		- 6 -
3.3.1	STEP 7-MicroWIN SMART " " " "	- 7 -
3.3.2	CPU	- 7 -
3.3.3	MBUS_CLIENT	- 8 -
3.2.4	MBUS_CLIENT RW Addr Modbus	- 9 -
3.2.5		- 10 -
3.2.6		- 12 -
3.4		- 13 -

SRX-0808-MT 8 S7-200SMRAT 8 1 SRX-1616-MT16 16 2

SRX MT

S7-200SMART PLC Modbus-TCP SRX-MT IO STEP 7-MicroWIN
 SMART IO

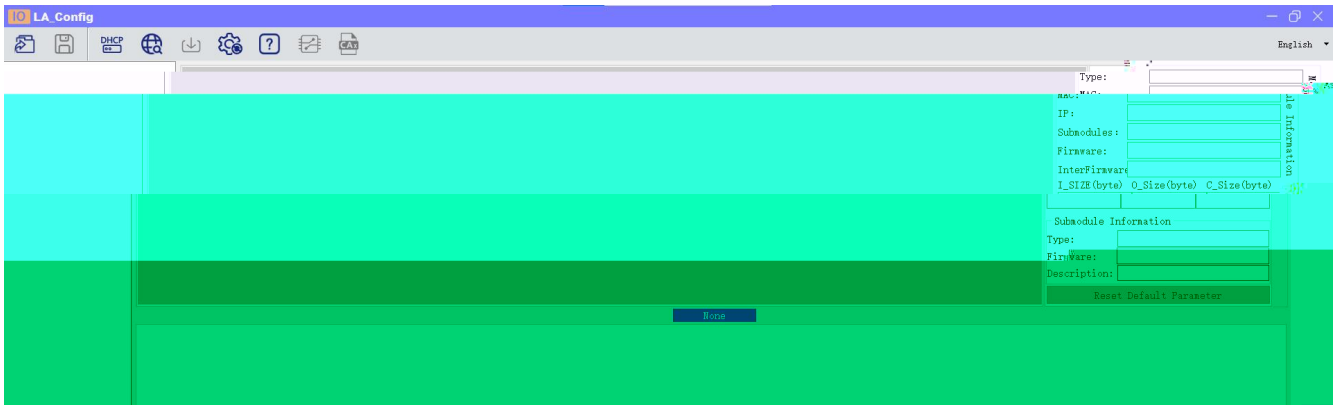
SRX-1616-MT*1 SRX-0808-MT*1
 30001(,40001

- STEP 7-MicroWIN SMART
- LA-config

1. S7-200SMART PLC IO
2. PLC RJ45 IO

IP

LAEC



IP

IP

IP



IP



IP

IP

IP

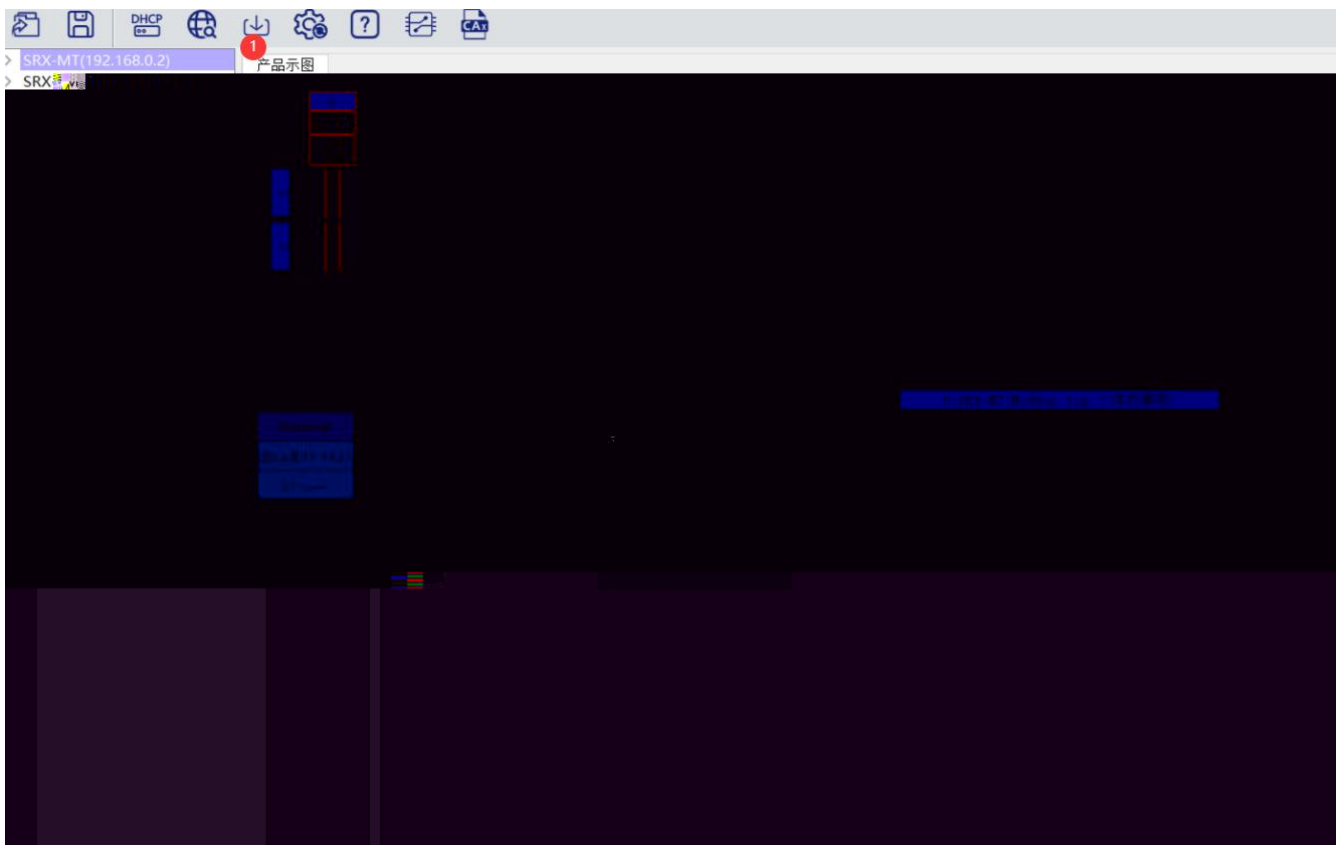
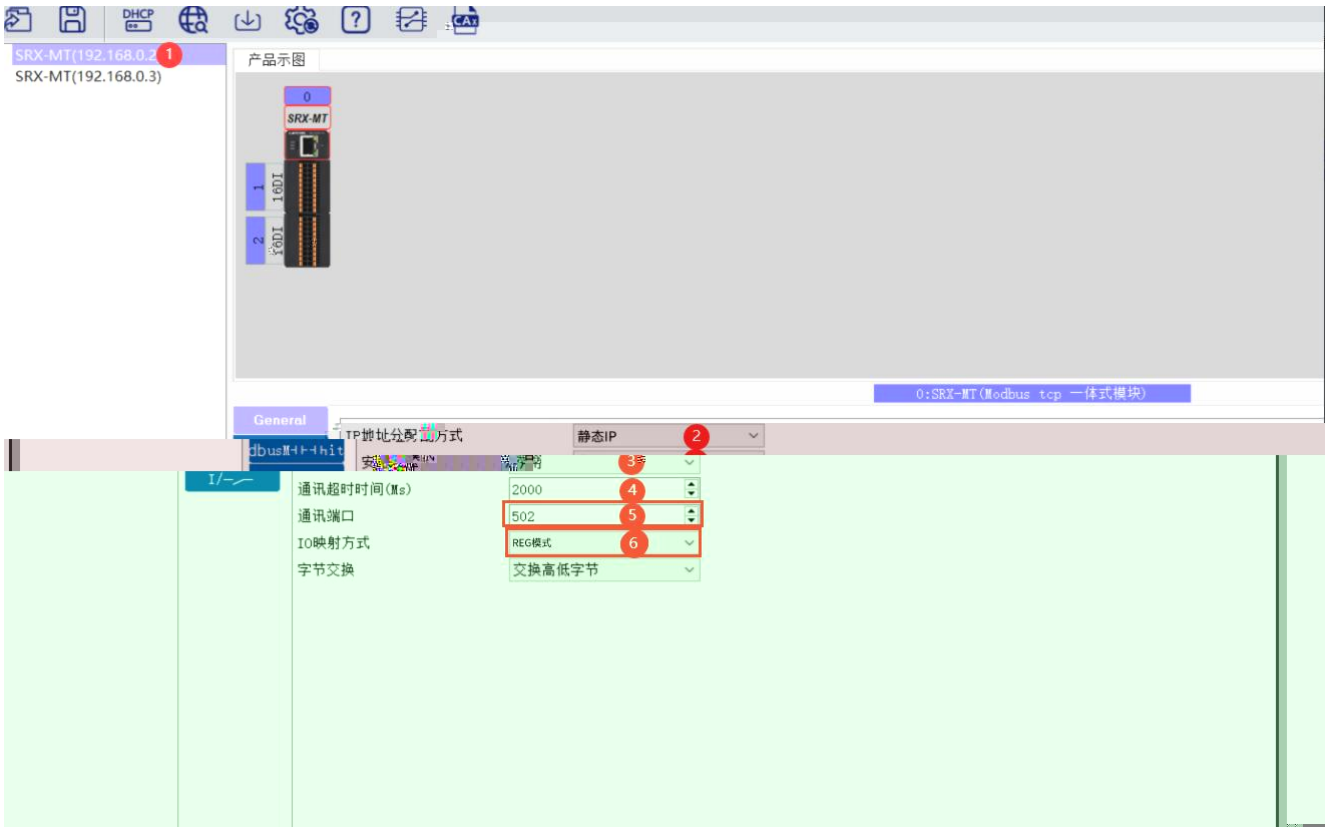


LUC-MT

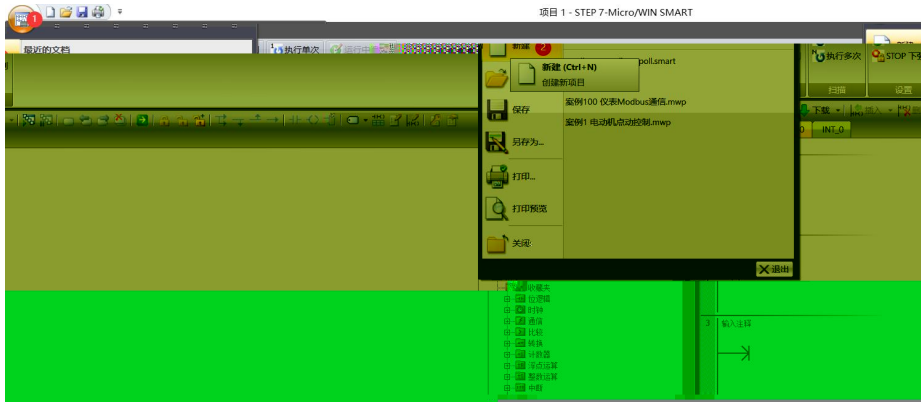
SRX-MT

IP,

502 IO

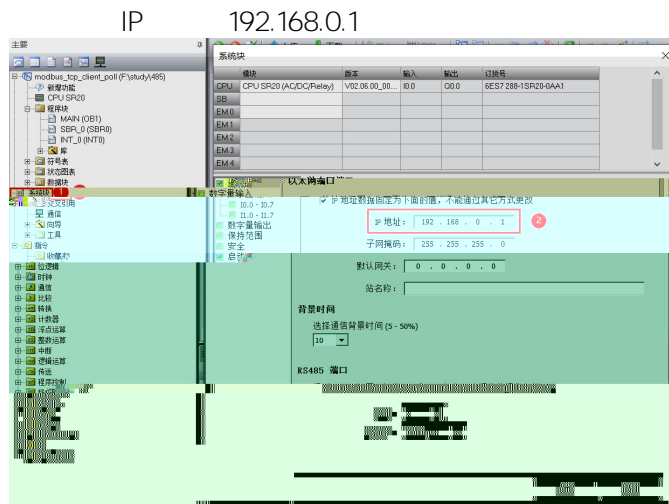


STEP M | WIN SMART



CPU

1.



2.

IP

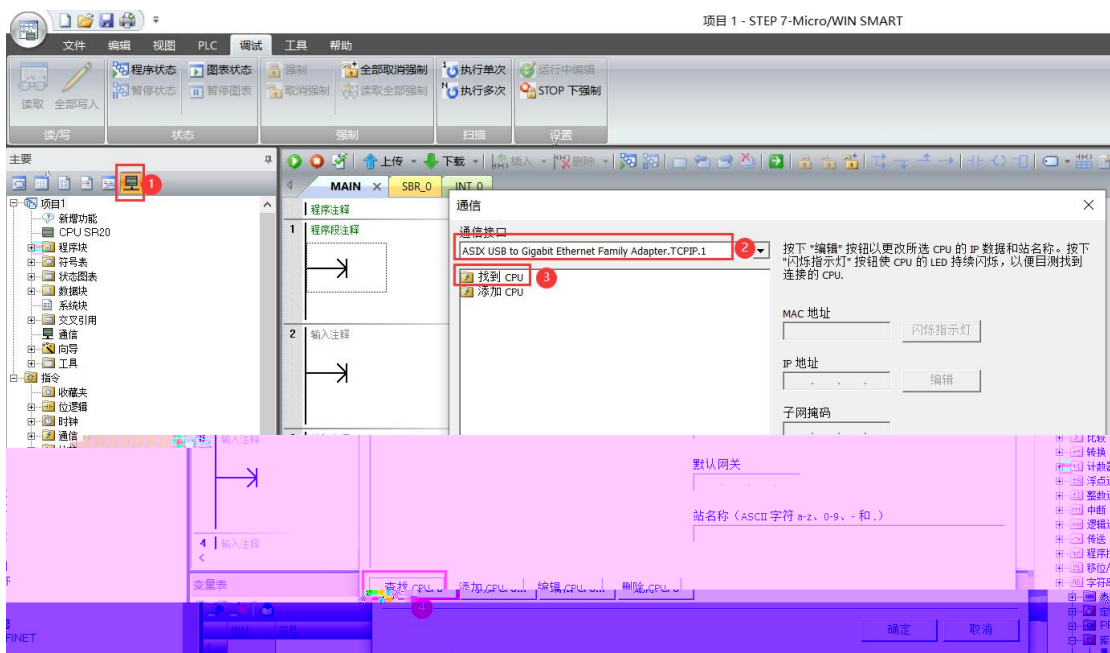
" "

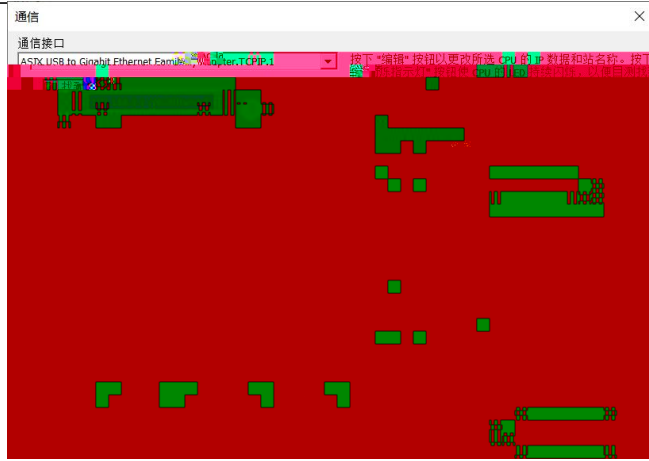
SRX-MT

192.168.0.1

CPU,

plc200smart





MBUS CLIENT



Req	IN	BOOL	Req FALSE TRUE	Modbus Modbus Modbus TCP
Connect	IN	BOOL	Connect Connect = TRUE IP Connect = FALSE Connect = FALSE Connect = FALSE	Modbus MBUS_CLIENT MBUS_CLIENT CPU MBUS_CLIENT CPU Req = TRUE
IPAddr1	IN	BYTE		Modbus IP
IPAddr2	IN	BYTE		Modbus IP

IPAddr3	IN	BYTE	Modbus IP
IPAddr4	IN	BYTE	Modbus IP
IP_Port	IN	WORD	Modbus TCP 502
RW	IN	BYTE	0 = 1 = Modbus
Addr	IN	DWORD	Modbus MBUS_CLIENT Modbus
Count	IN	INT	Modbus 10001 19999 30001 39999 Count 1920 Count 120 Modbus
DataPtr	IN_OUT	DWORD	Modbus DataPtr V Modbus Modbus
Done	OUT	BOOL	TRUE Modbus FALSE Modbus
Error	OUT	BOOL	

MBUS_CLIENT		RW	A	M	b	CPU	
FC		RW	A		C	CPU	
1		0	00001	09999	1 1920	Q0.0	Q1151.7
2		0	10001	19999	1 1920	I0.0	I1151.7
3		0	40001	49999	1 120	V	
			400001	465535			
4		0	30001	39999	1 120	AIW0 - AIW110	
5		1	00001	09999	1	Q0.0	Q1151.7
6		1	40001	49999	1	V	
			400001	465535			

15		1	00001 09999	1 1920	Q.0.0 Q.1151.7
16		1	40001 49999 400001 465535	1 120	V

IP 192.168.0.2 192.168.0.3 502

程序注释

1 输入注释

First_S~:SM0.1 V1000.0

符号	地址	注释
First_Scan_On	SM0.1	仅在第一个扫描周期时接通

2 Modbus TCP Client

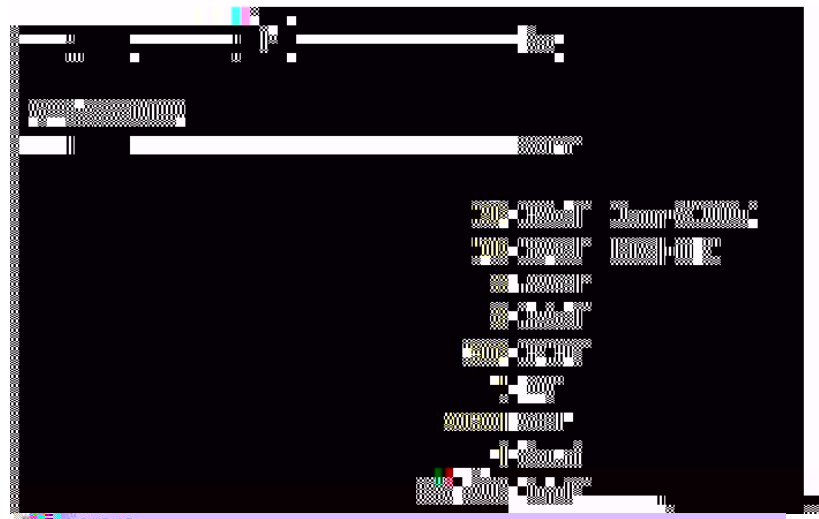
- 1、系统块设置ST60固定IP地址: 192.168.0.1
- 2、Req使用上升沿触发
- 3、Connect使用sV1000.0接通, 不通过指令断开连接
- 4、IPAddr1-参数修...

1. 打开PLC工程...

2. 打开PLC工程...

3. 打开PLC工程...

4. 打开PLC工程...



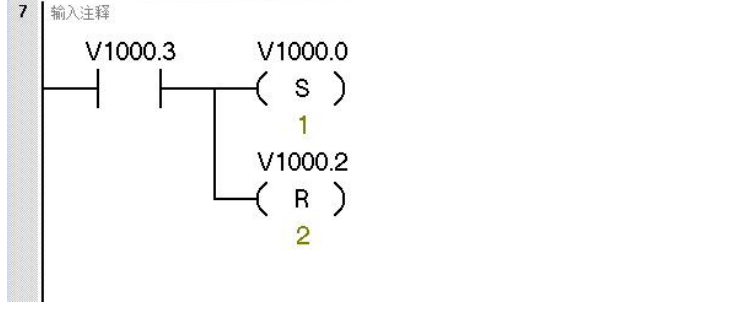
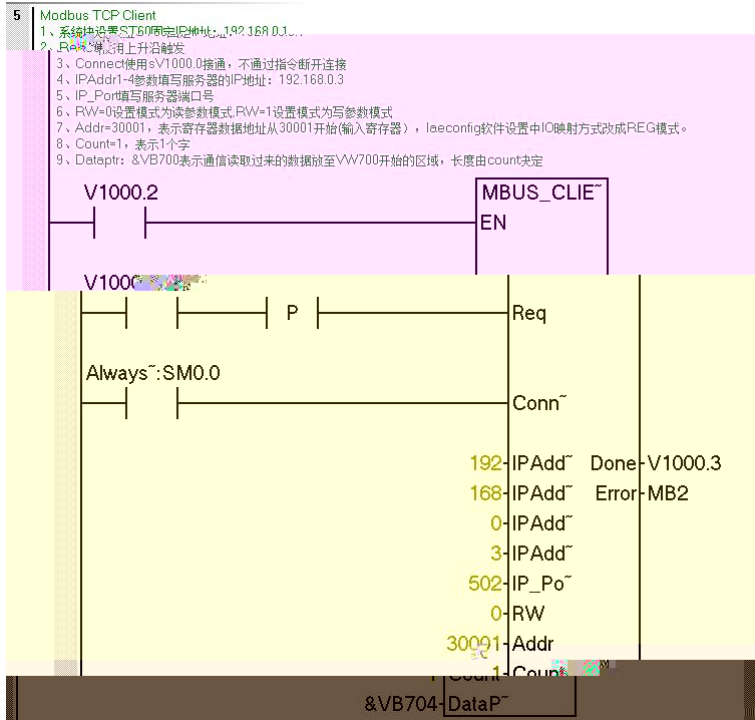
查看错误代码

完成位为1且error字节不等于0时, 错误字节数值传送到未使用区域, 以获得错误代码

符号	地址	注释
写错误代码	MB10	

4 输入注释

V1000.1 V1000.C1





凌科自控
LATCOS

凌科自控
LINCOS CONTROL SYSTEMS

