

2023-03-23

2023 03 23

2023 03 23

R PLC CCLINK_IE_Field Basic MR-CE IO

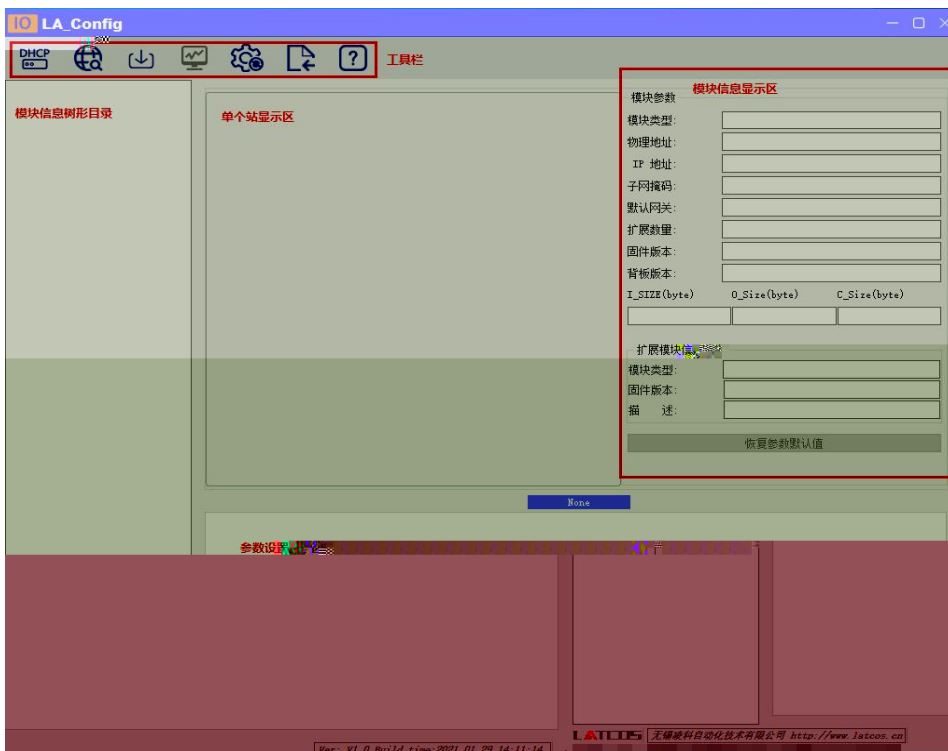
R PLC CCLINK_IE_Field Basic MR-CE IO GX-WORKS3
IO

- GX-WORKS3

1. R PLC IO

2. PLC Ethernet CCLINK_IE_Field Basic IO

LAEConfig IP IP 192.168.0.x



						
DHCP 服务	扫描 模块	下载 参数	监控	参数	描述文 件导入	帮助

IP地址范围: 192 . 168 . 0 . 1 — 192 . 168 . 0 . 255

0%

开始 停止



IP

IP

IP

LA_Config

MR0808X-CE(192.168.0.2)


模块名称: MR0808X-CE
模块类型: MR0808X-CE
物理地址: 7C-BA-CC-15-5C-5E

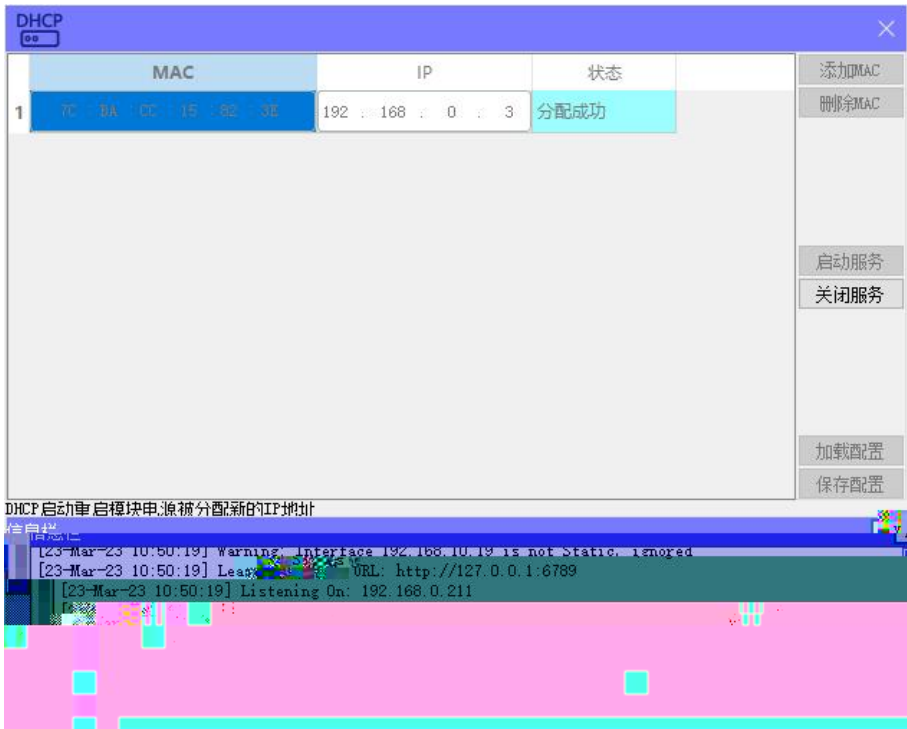
1

"IP"

IP"

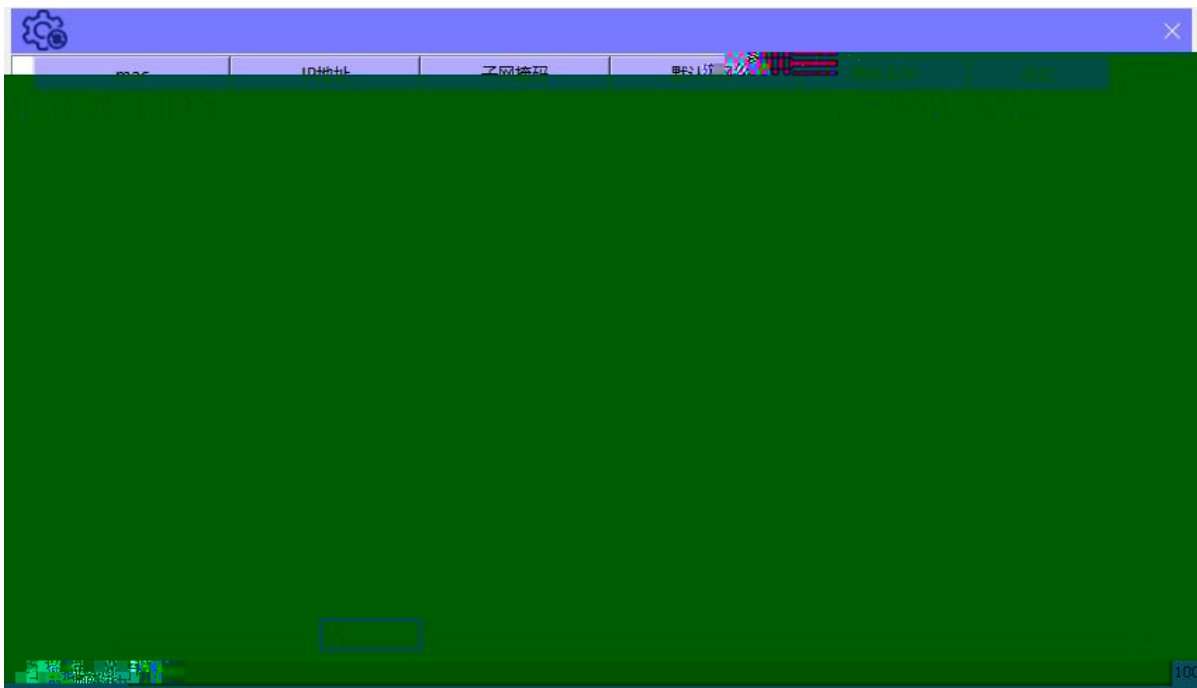



 DHCPService " MAC" " MAC"
 MAC IP " "
 IP



" "

2



IP " IP" IP

GX Words 3

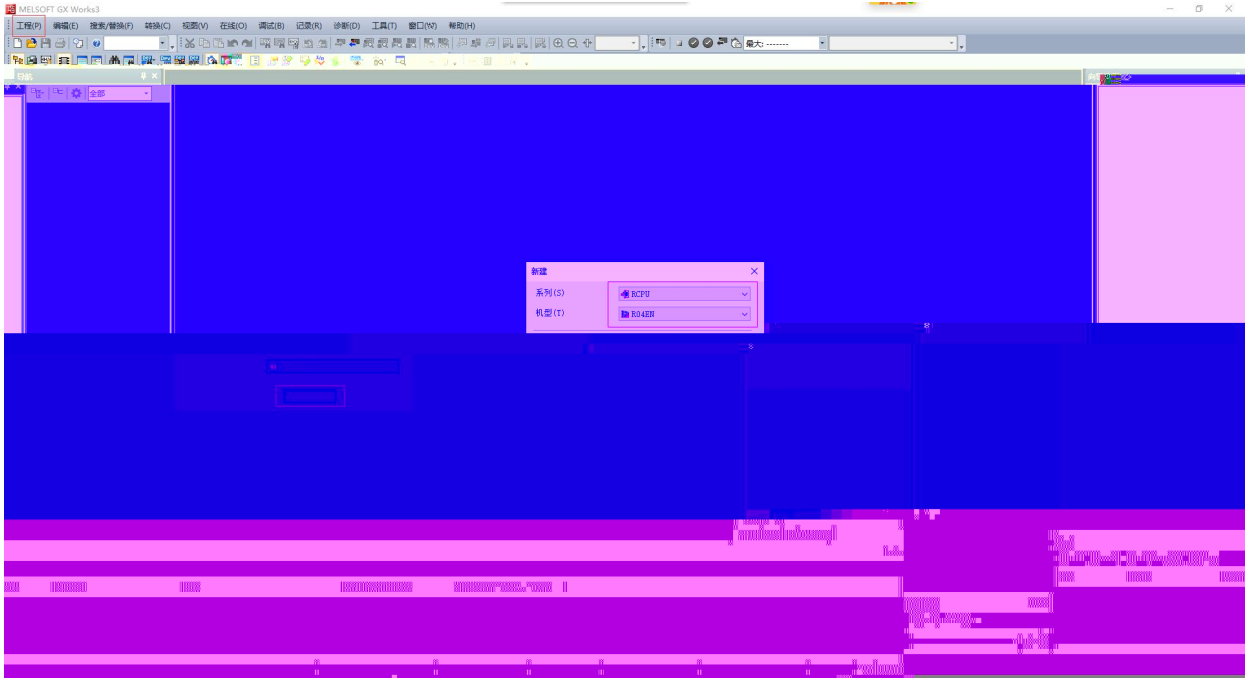
" " " " "

PLC

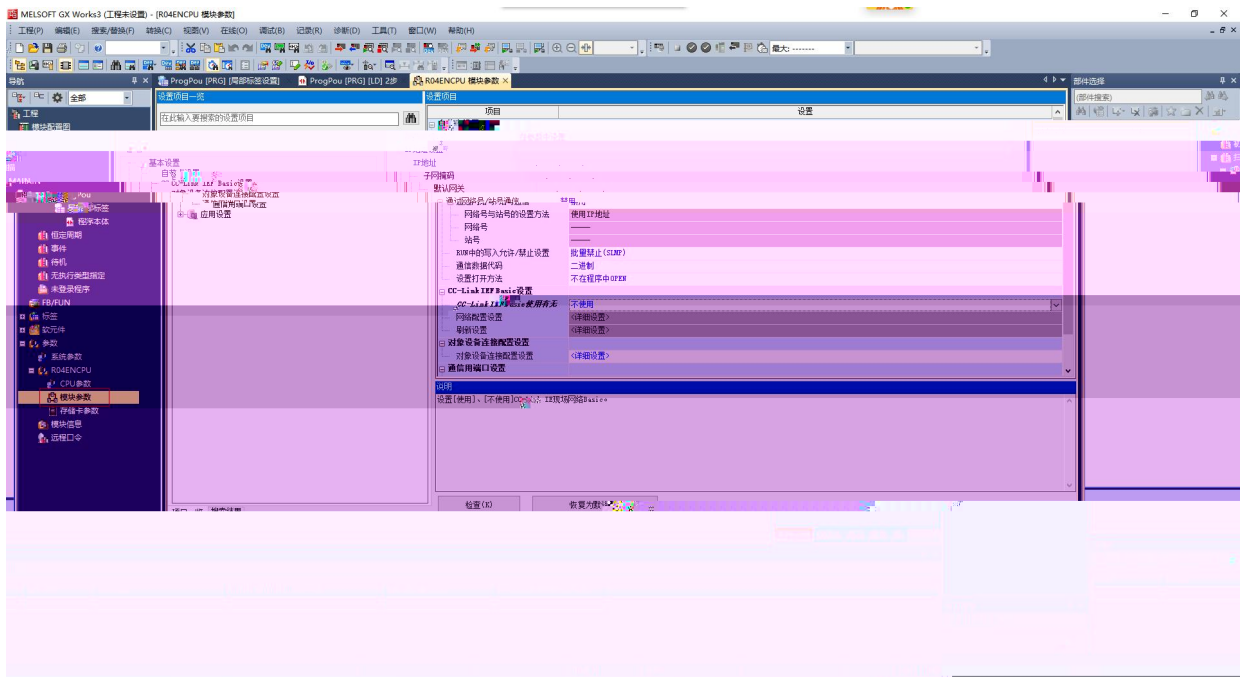
CPU

5U

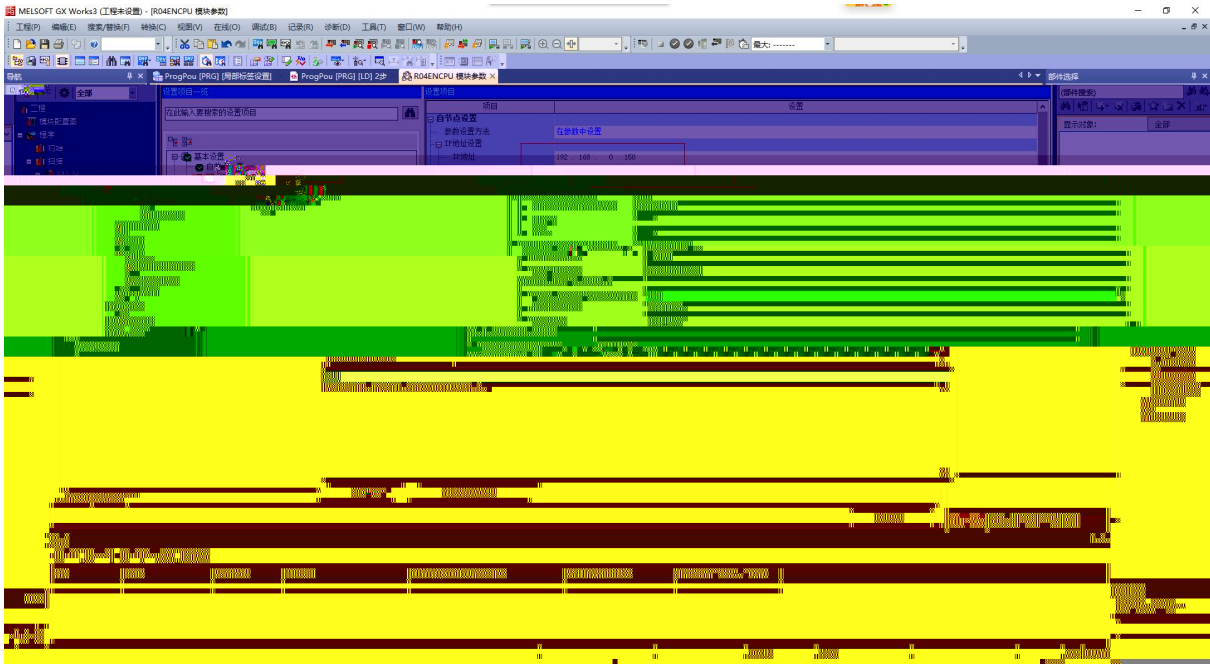
CPU



/FX5UCPU/ /

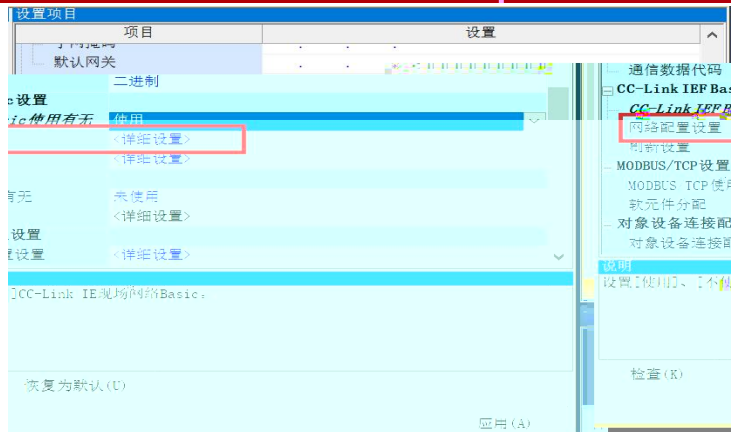
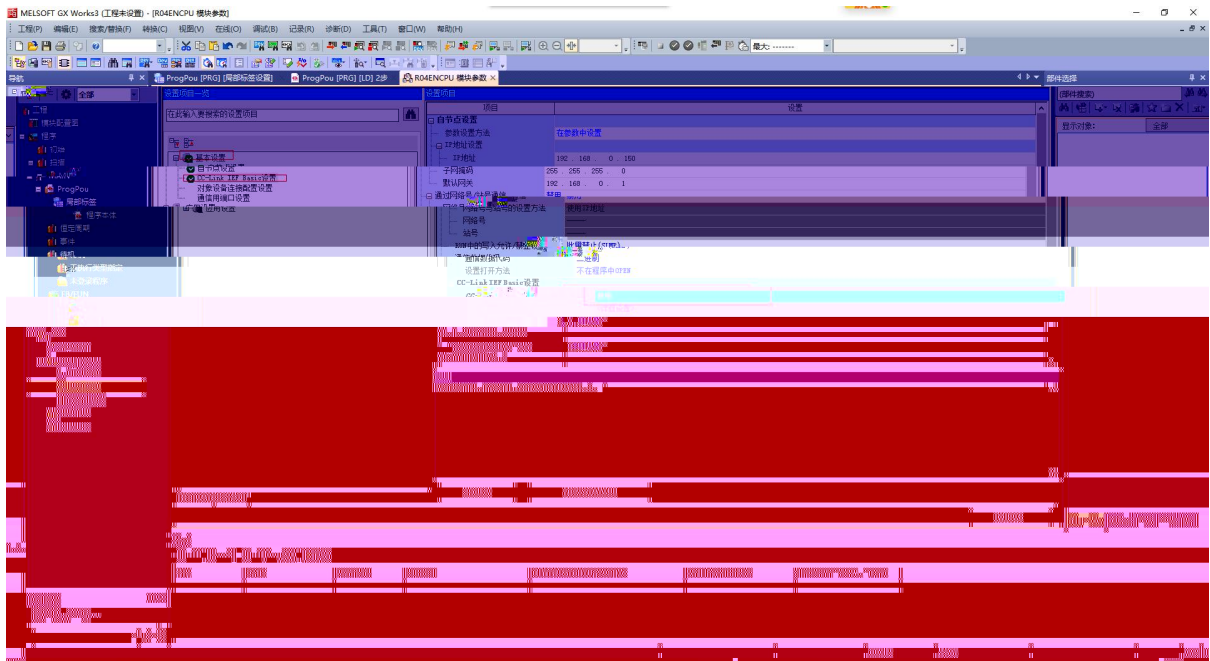


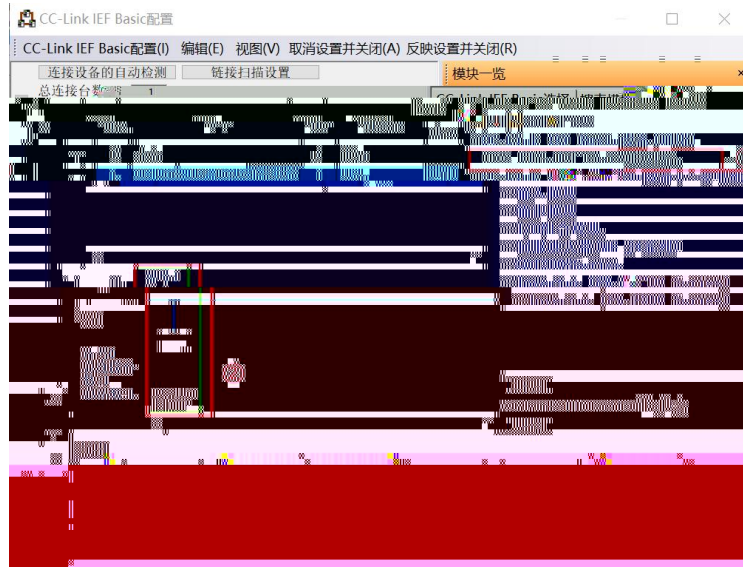
PLC IP



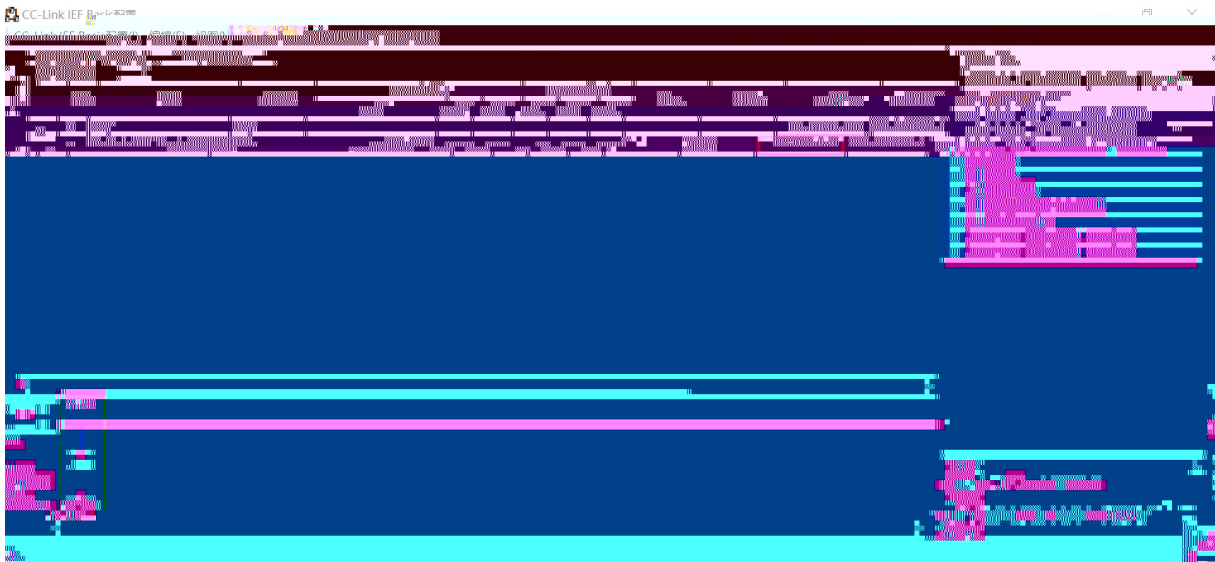
CC-Link IE Field Basic

CC-Link IE Field Basic

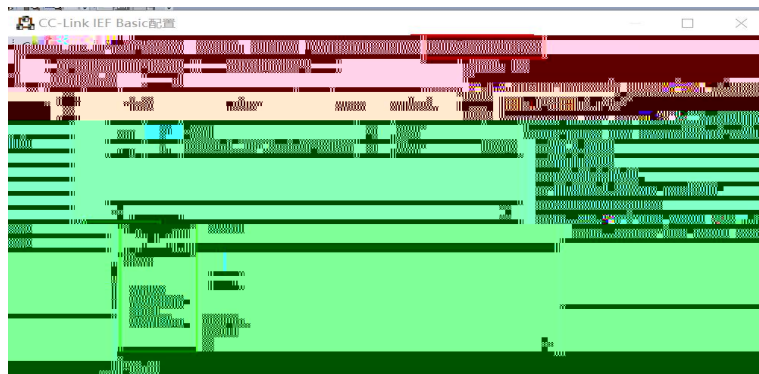


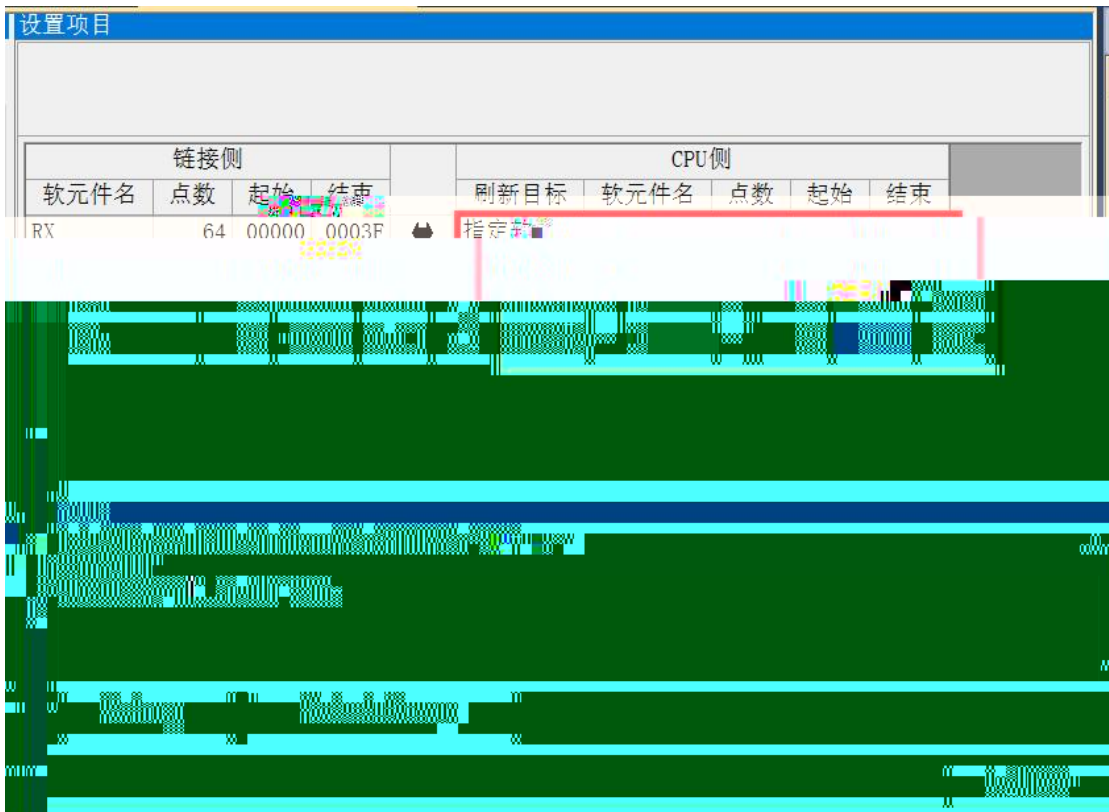
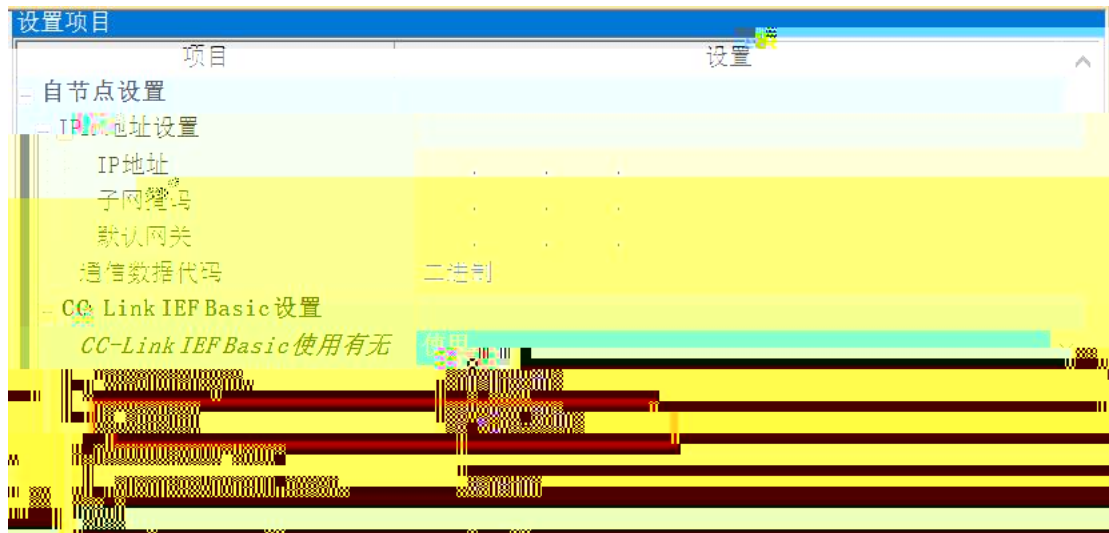


CC-Link IE Field Basic IP



" "





CC-Link IE Field Basic

64

64DI 64DO

X100,Y100

IO

