

透科自动化

APG1503

KV8000

ethernetip)

Ethernet/IP APG-1503 KV8000



2021-4-13	
2021 04 13	2021 04 13

1.

KV STUDIO Ver.10G

2.

KV8000 Ethernet/IP APG 1503 KV STUDIO Ver.10G
APG 1503 .eds PLC modbus

3.

- KV STUDIO Ver.10G
- IO APG 1503.eds

4.

4.1

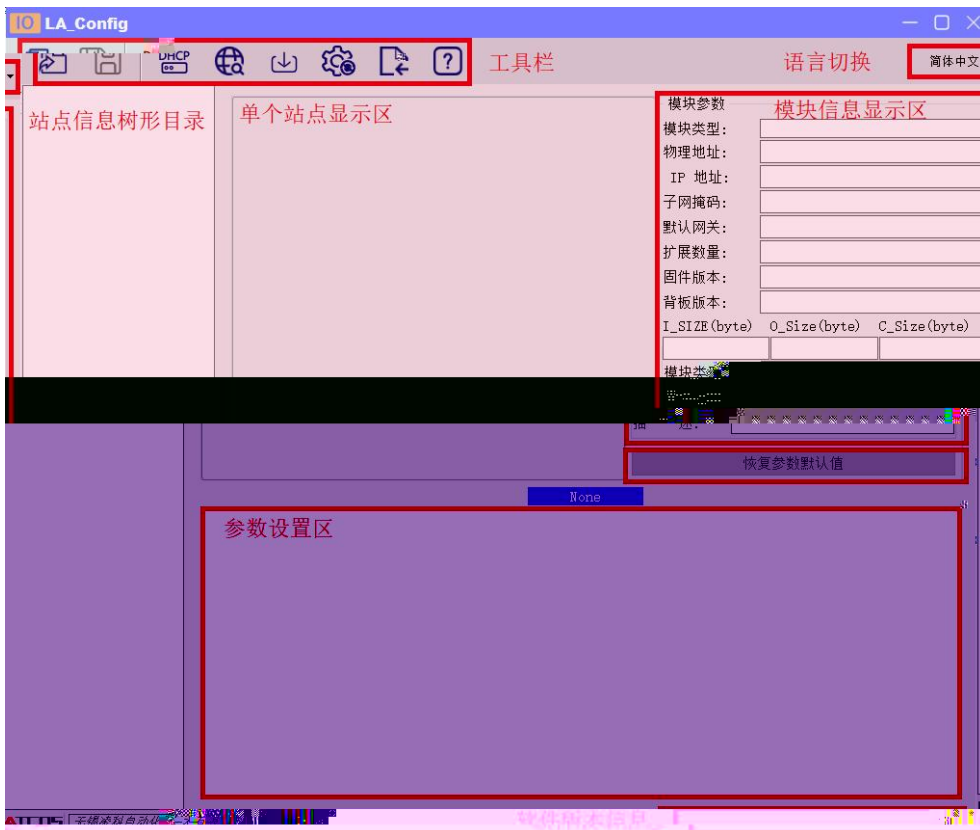
- 1. KV8000
- 2. PLC Ethernet

4.2

IP

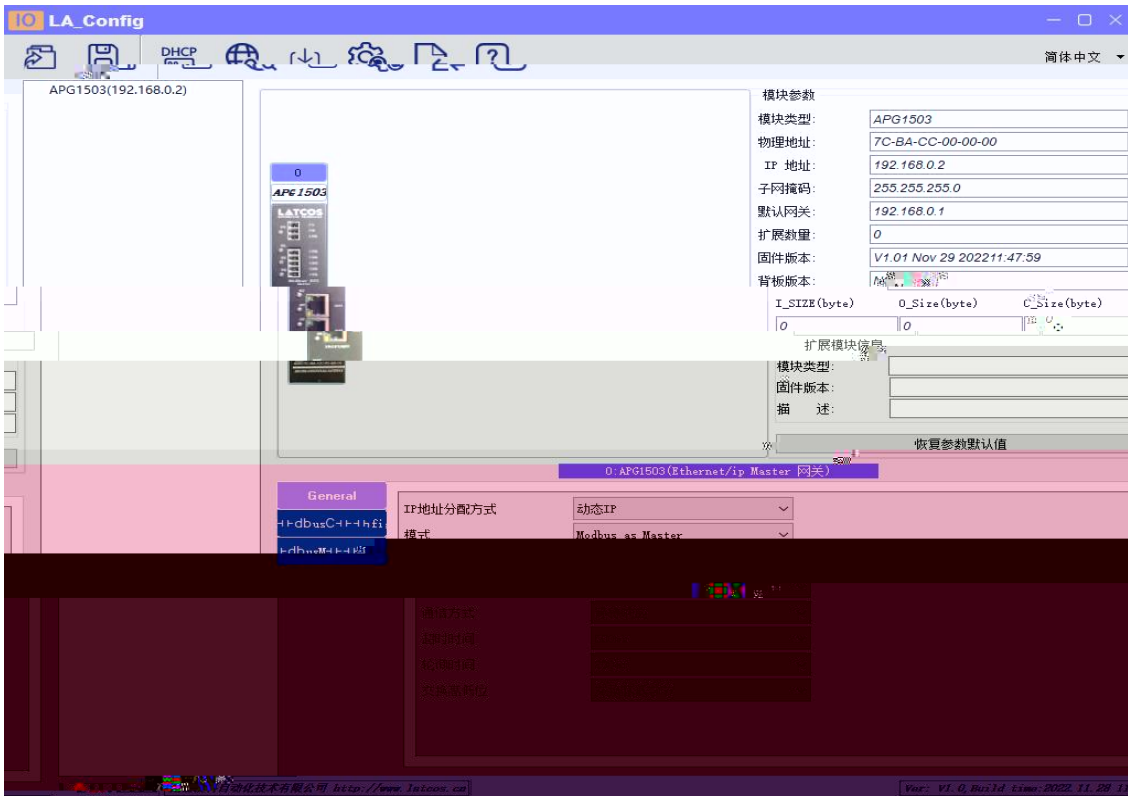
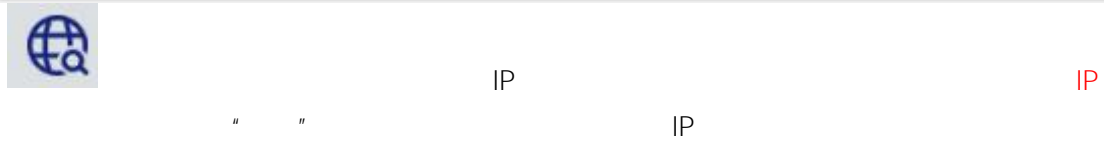
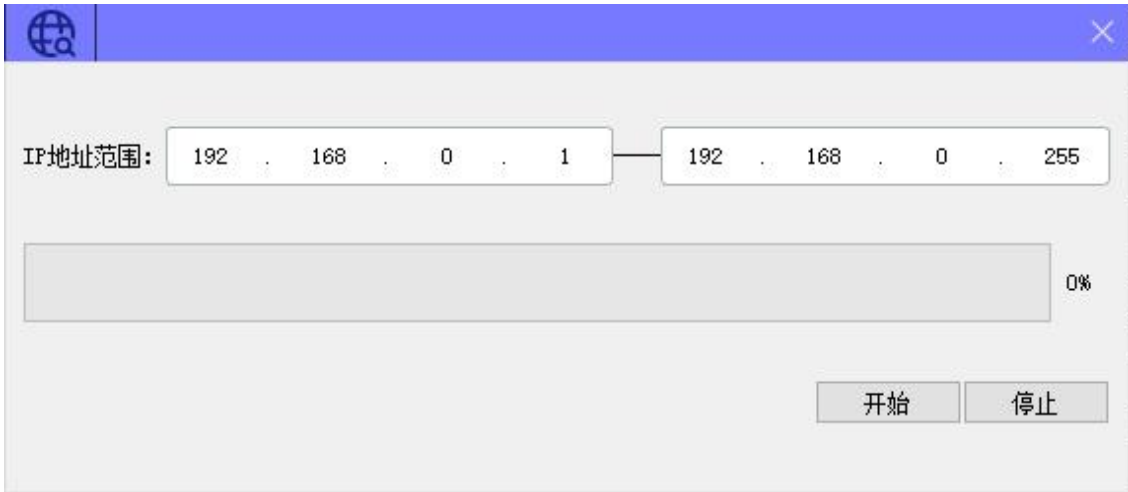
4.2.1

LAEConfig IP IP 192.168.0.x





4.2.2



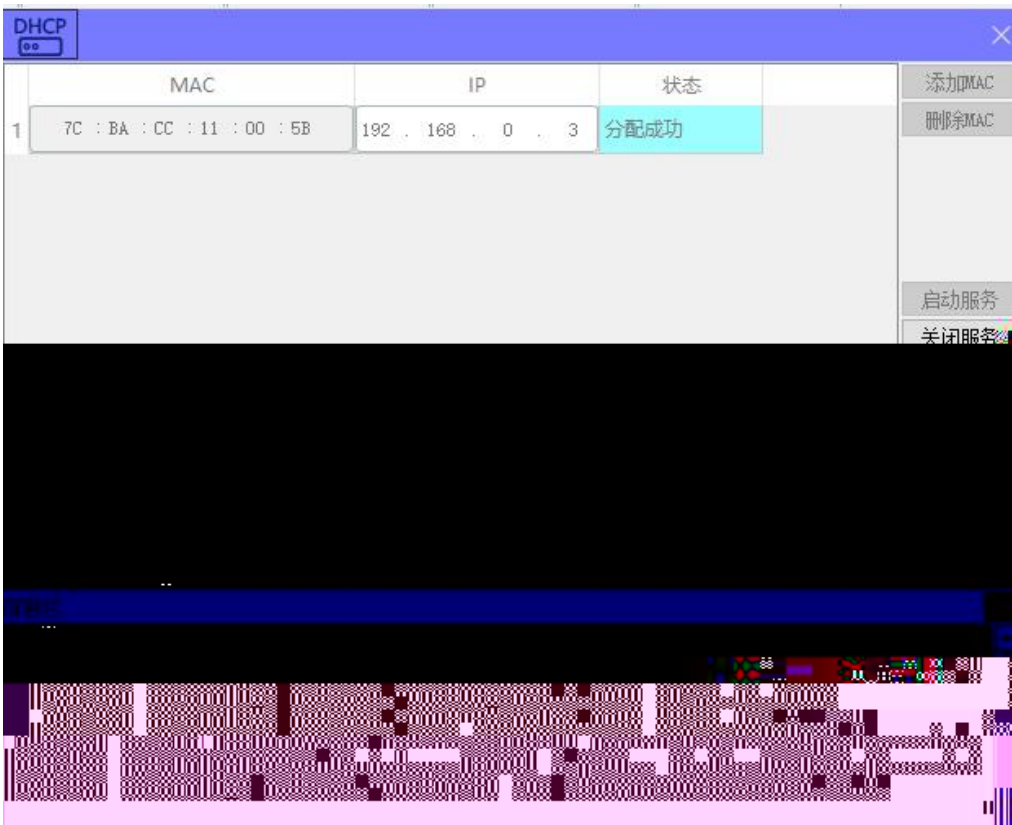
4.2.3 IP

1

“IP” “IP”



DHCPService " MAC" " MAC"
MAC IP " "





mac	IP地址	子网掩码	默认网关	模块名称	状态
-----	------	------	------	------	----

扫描时间 5 :S

全局扫描 修改IP 恢复出厂设置 重启模块

mac IP地址 子网掩码 默认网关

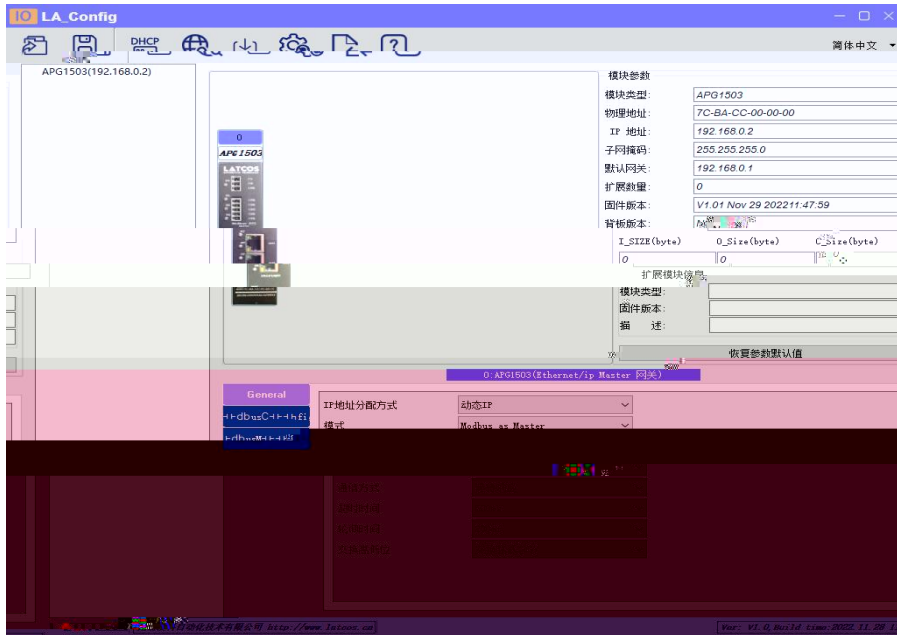
IP

“ IP”

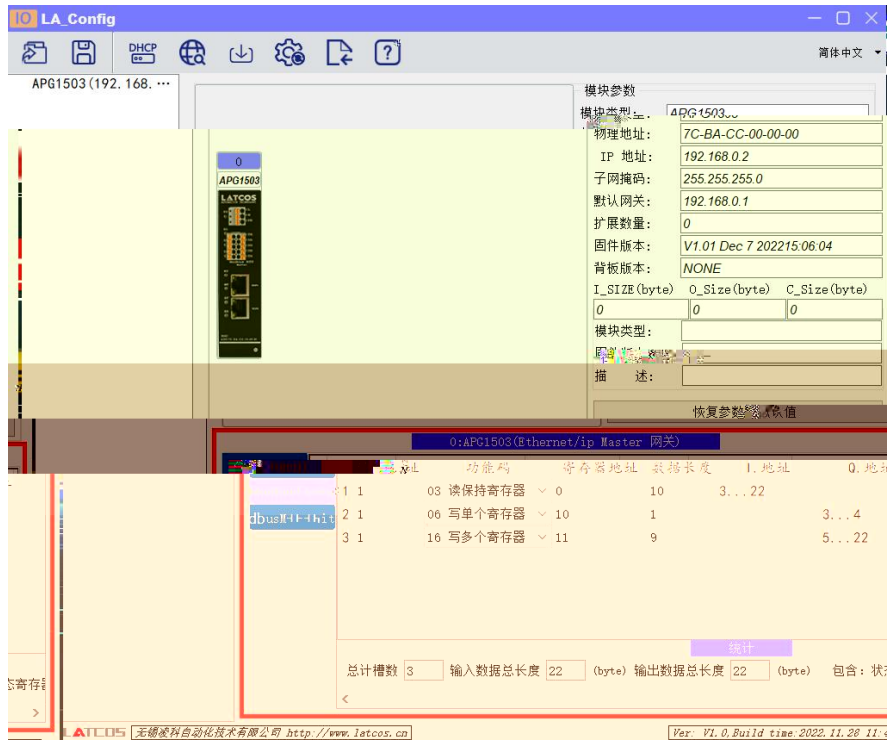
IP

4.2.4

1. MODBUS



2. MODBUS



3 10 16 10 16

2 +20 modbus 22

2 +20 modbus 22



5.

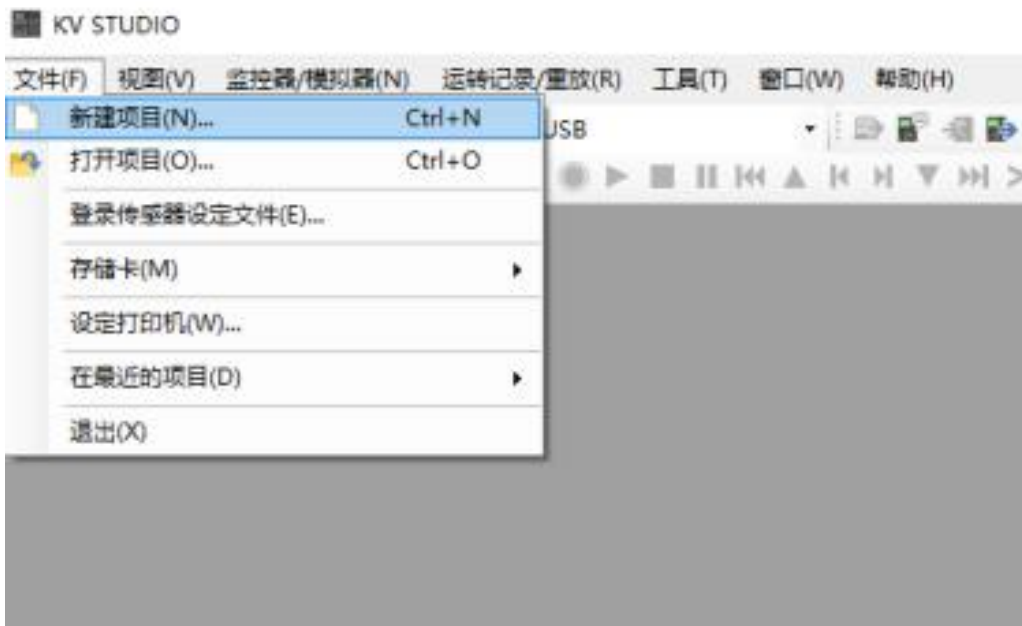
APG1503 PLC(KV8000) KV STUDIO

5.1

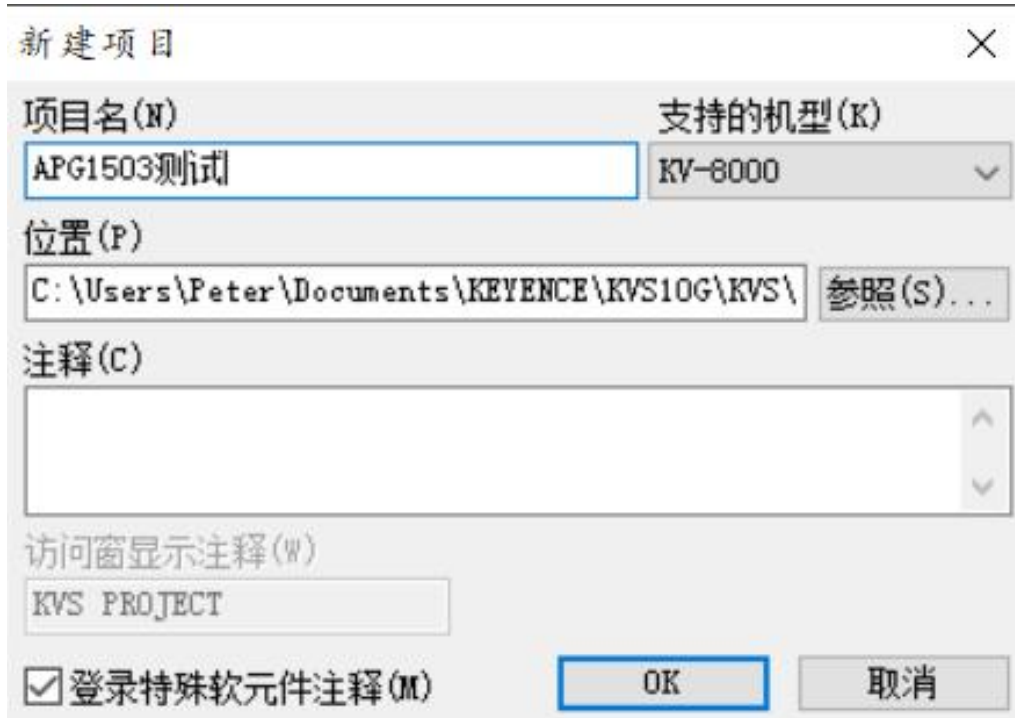
5.2

KV STUDIO

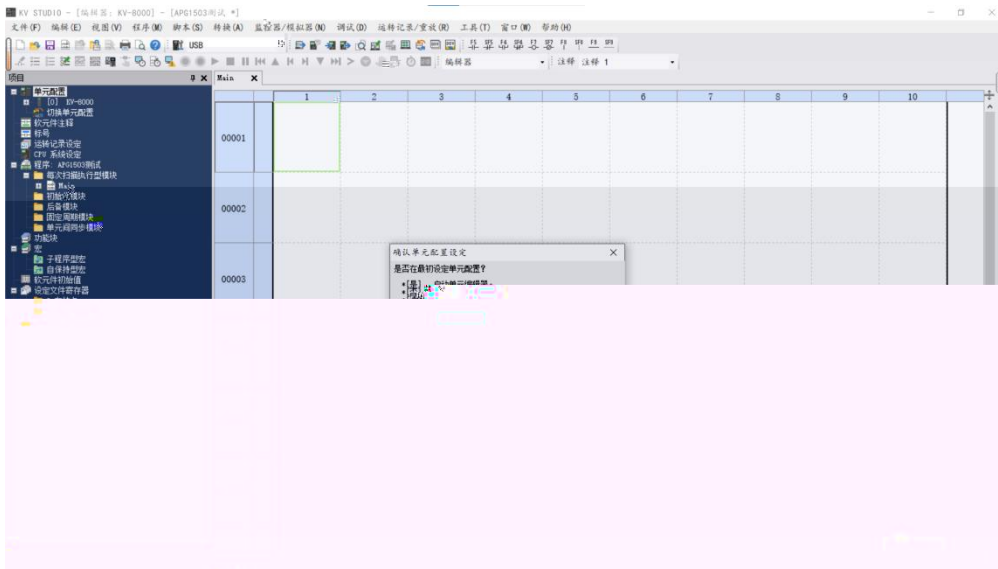
" " " "



PLC

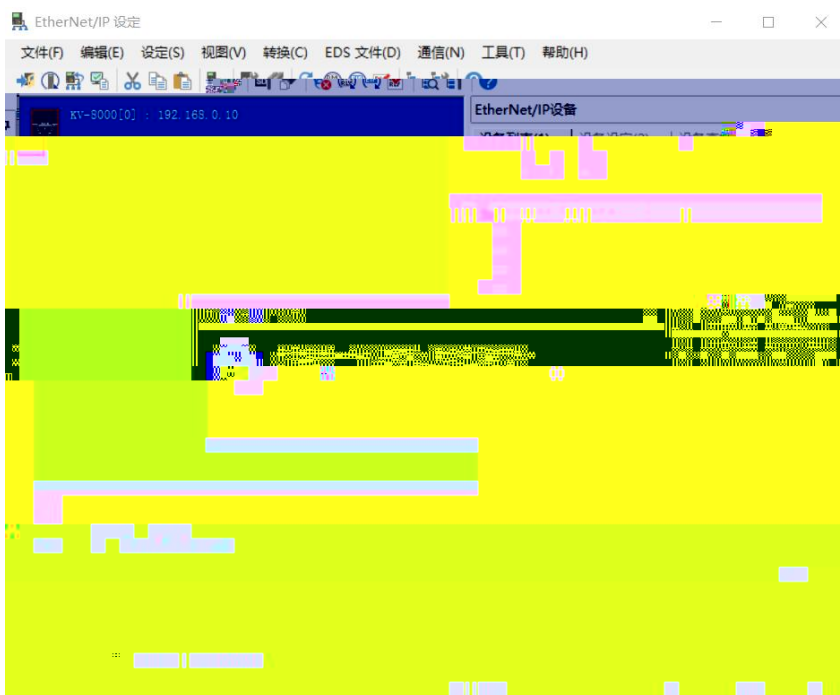
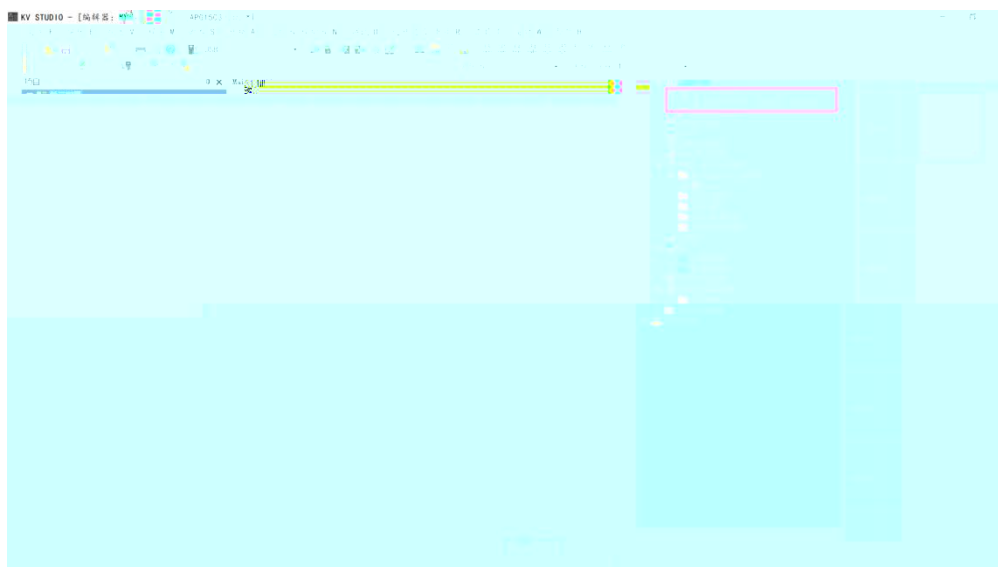


5.3 EtherNet/IP



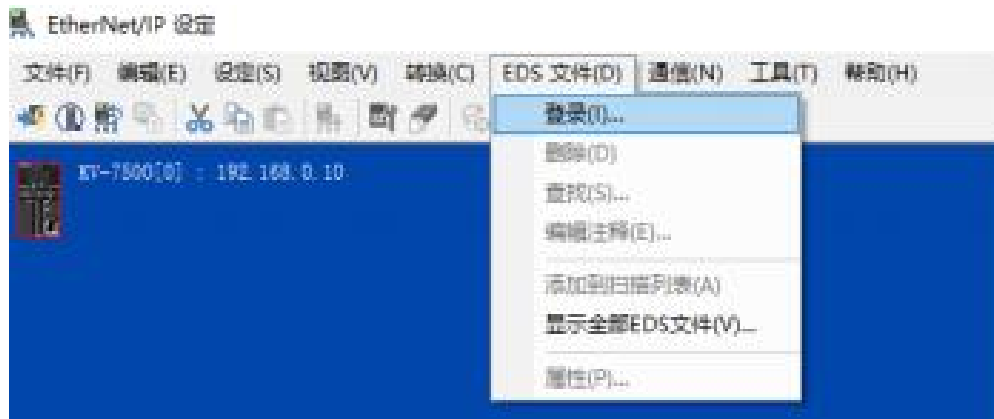
PLC

EtherNet/IP



5.4 EDS

“EtherNet/IP” “EDS” “ ” “ ”



EDS

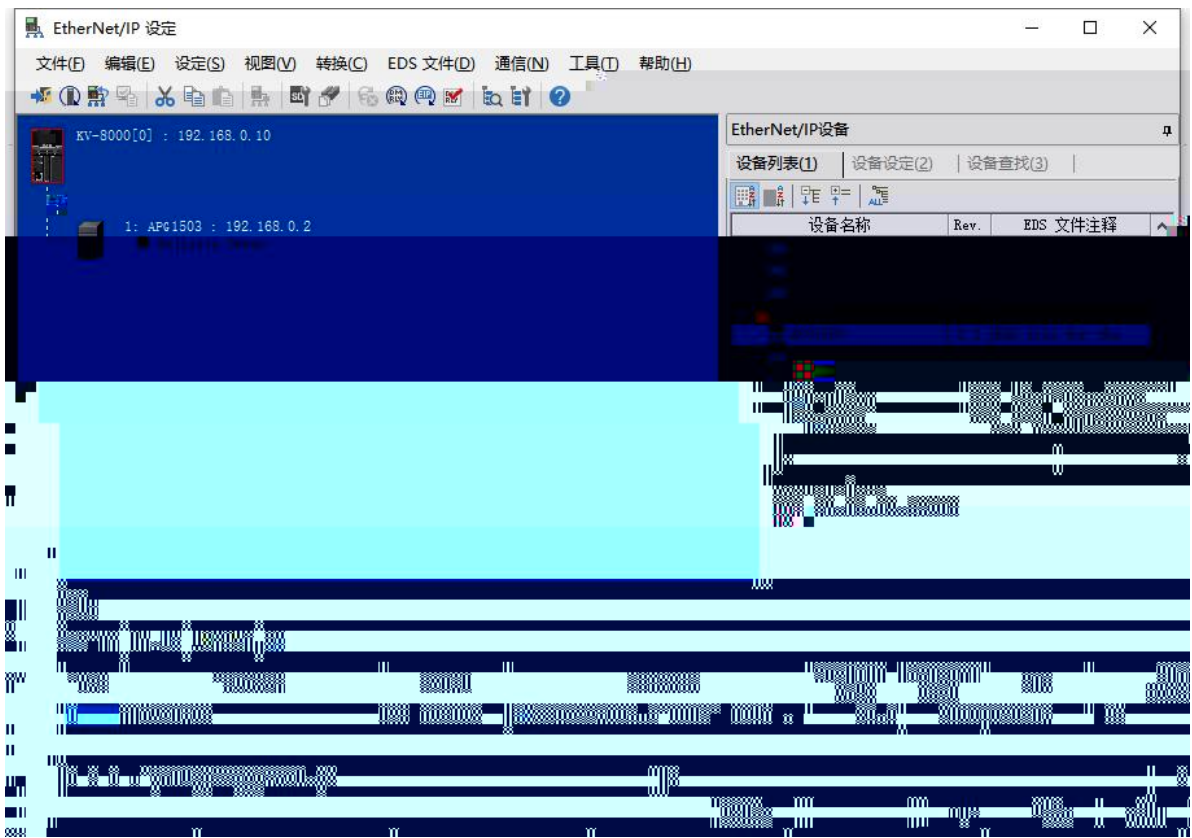
EDS



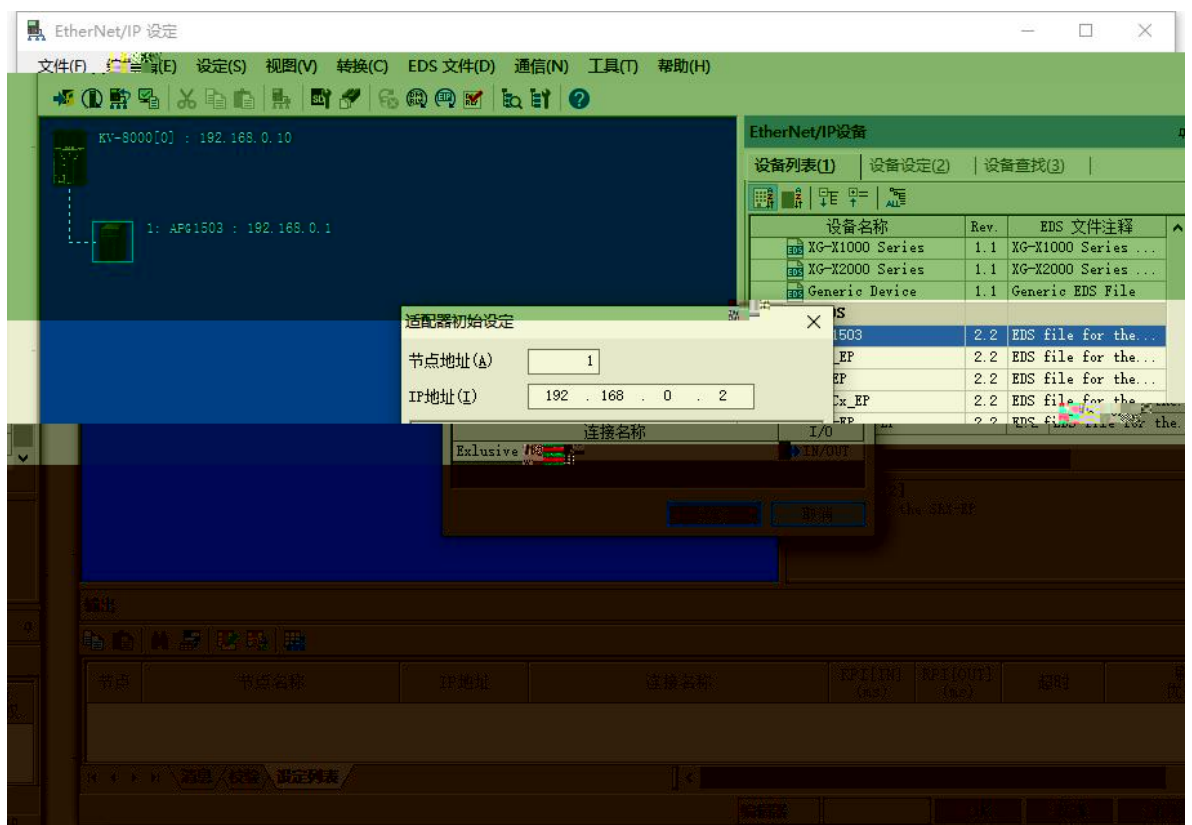
5.5

EtherNet/IP

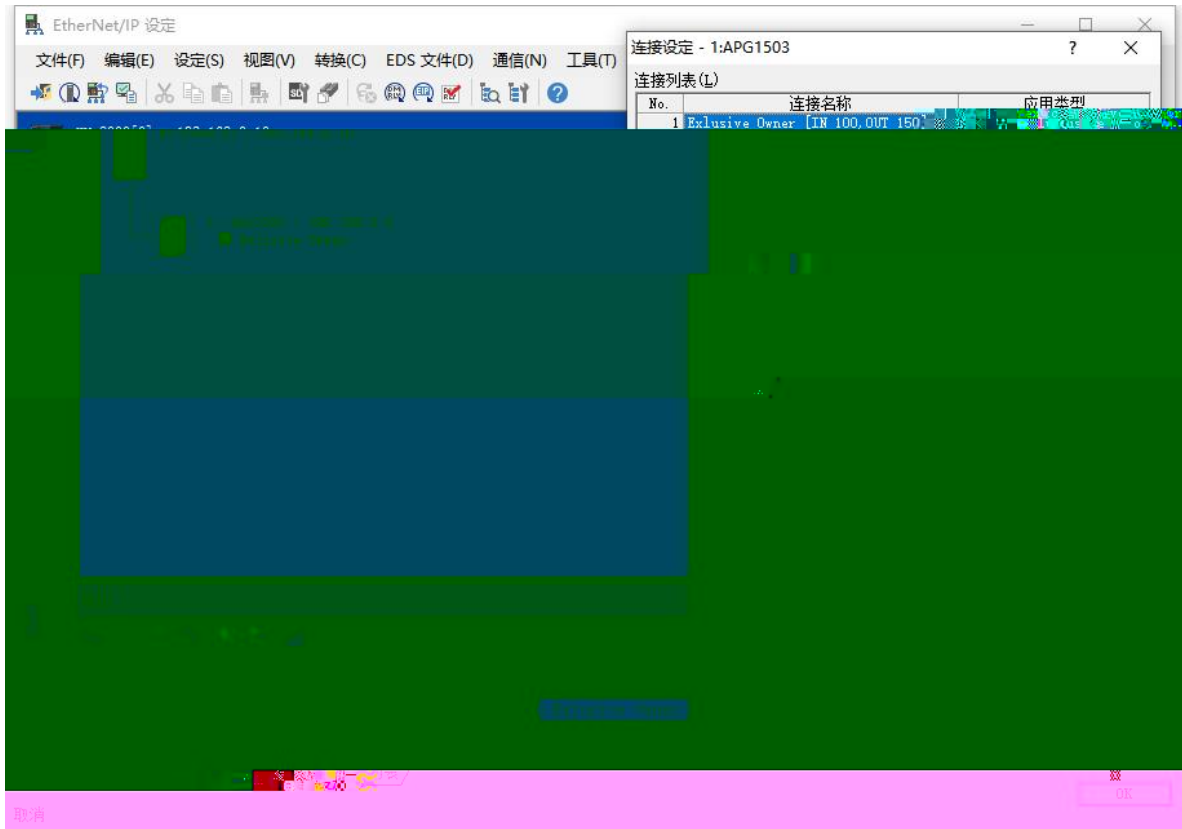
"APG 1503"



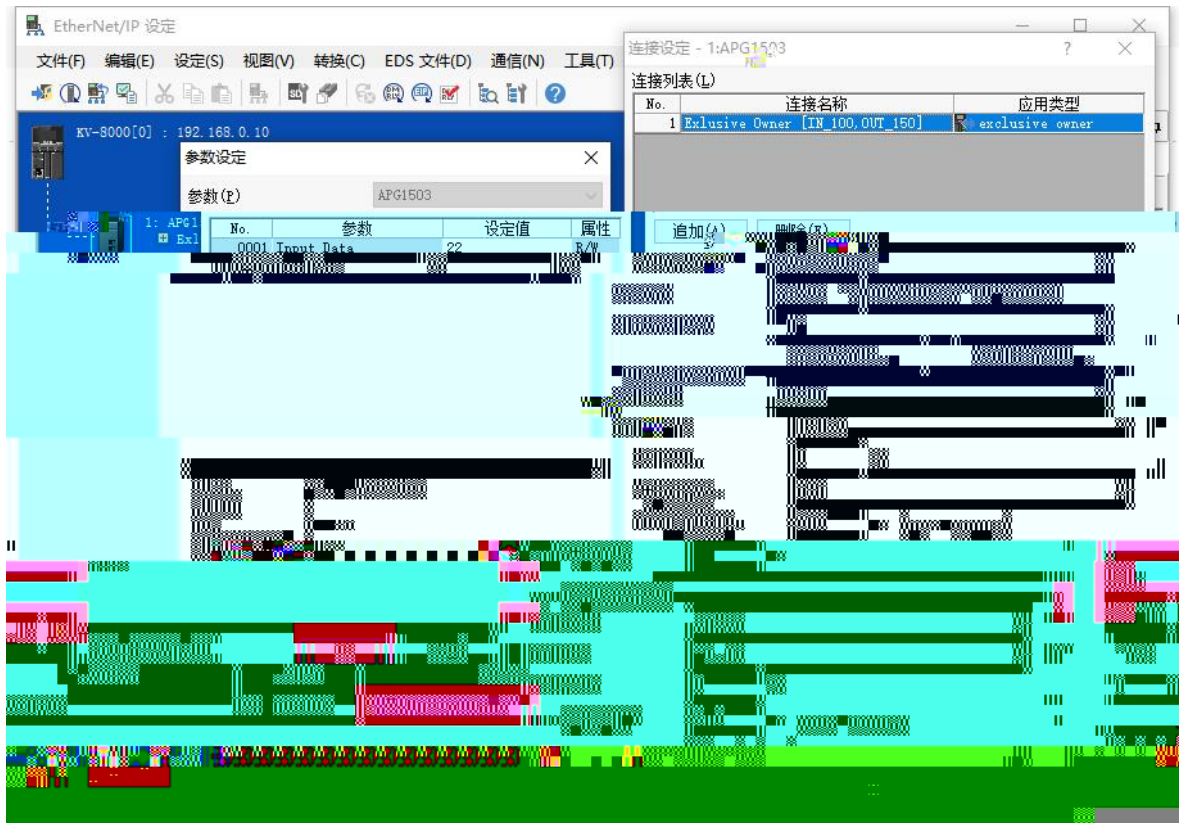
IP



"Exclusive Owner"



" "



5.6

PLC

" " " "

6.

1.

windows

ping

IP

ping

ping

IP

IP

2

RUN

ERR

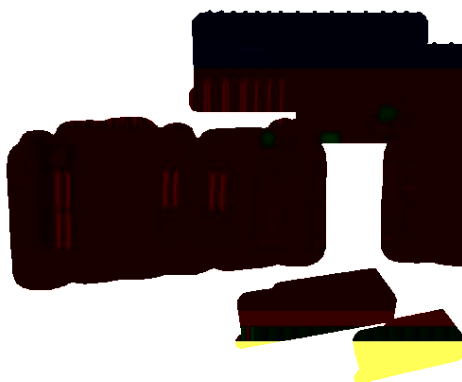
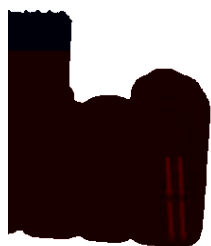
IP

IP

IP



www.laticos.cn
0510-85888030



www.laticos.cn

3

0510-85888030

7 701