

透科自动化

Ethernet/IP R51CX-EP OMRON(NX/NJ)



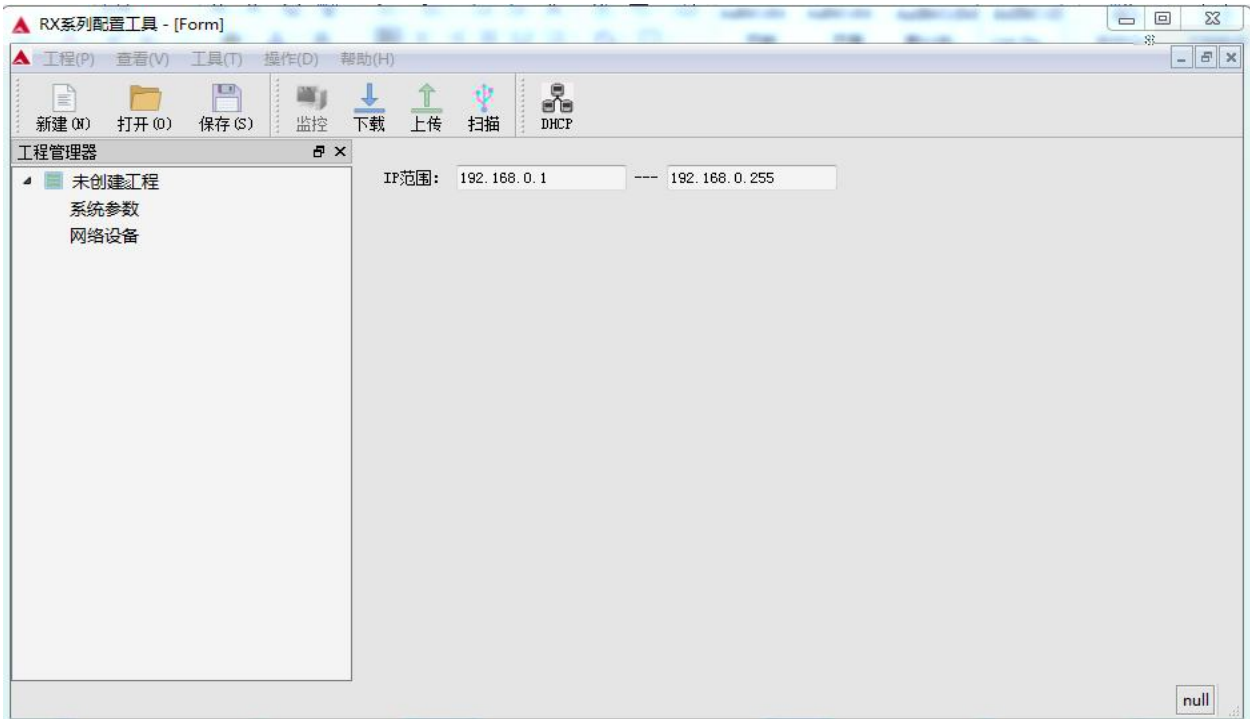
OMRON-NX/NJ PLC Ethernet/IP IO

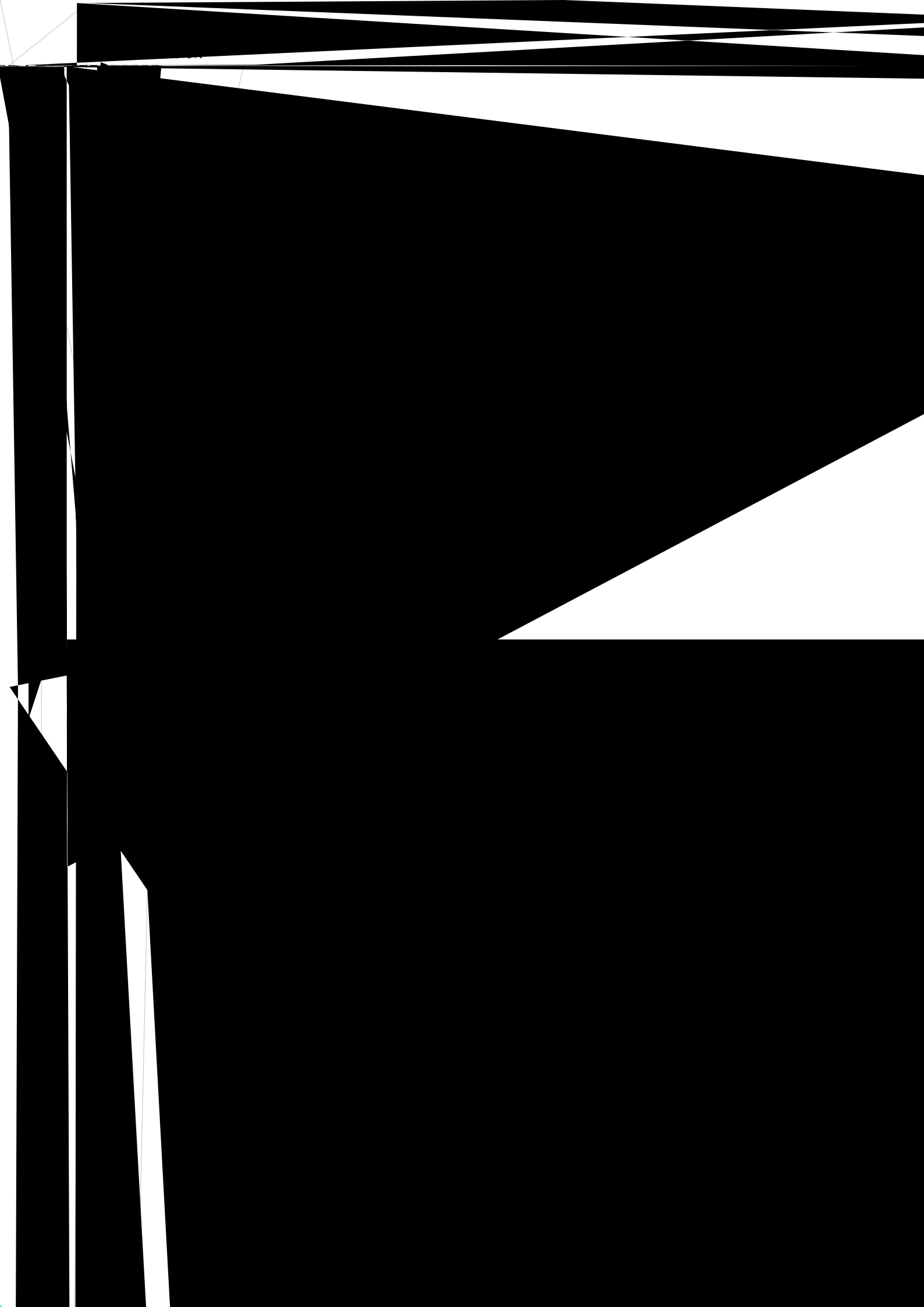
OMRON-NX/NJ PLC Ethernet/IP IO Sysmac Studio
IO .eds IO

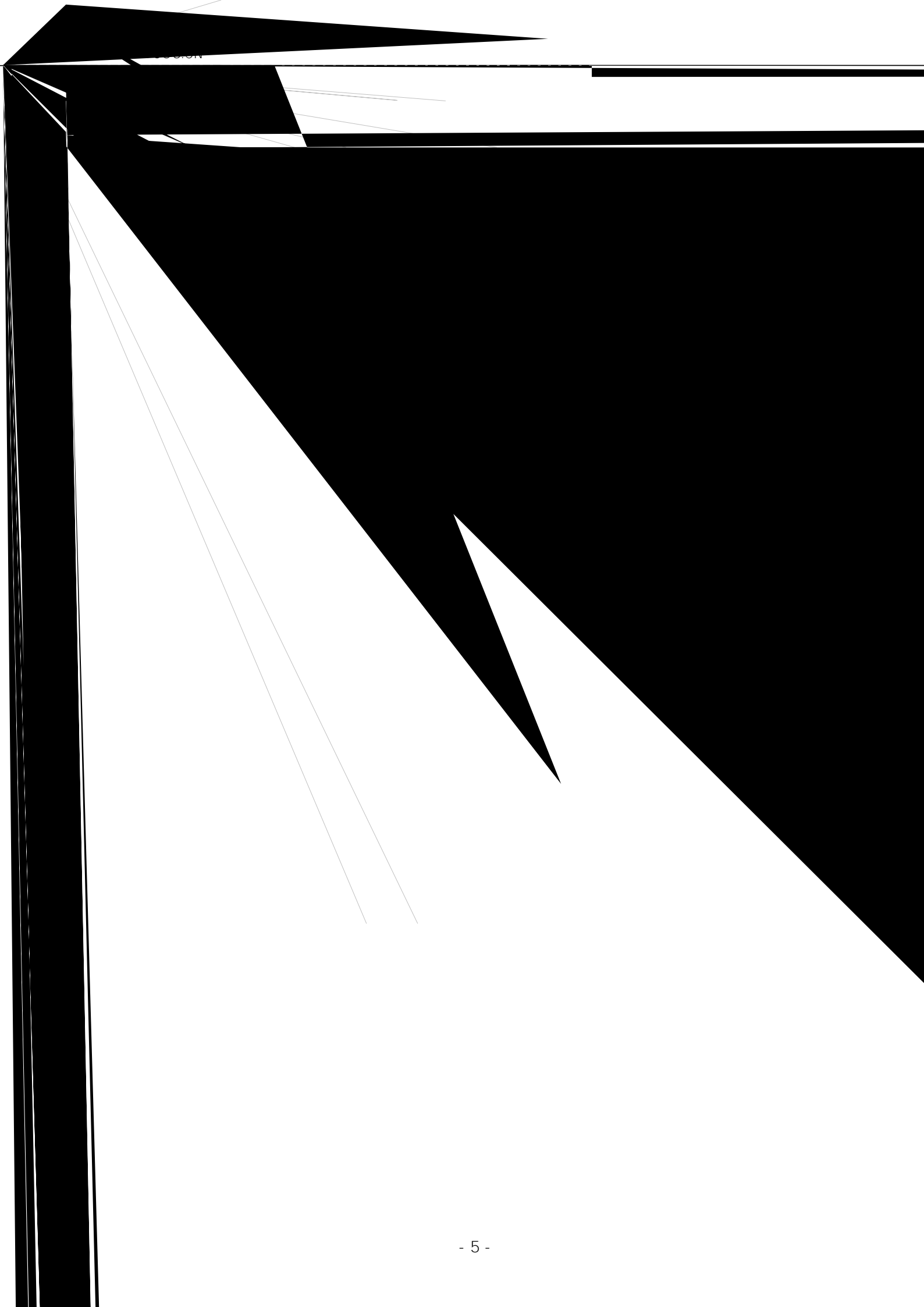
- OMRON Sysmac Studio
- IO R51C1_EPPRO.eds

1. PLC IO
2. PLC Ethernet IO

1. RxTool IP IP 192.168.0.X







NX1P2 9024DT V1.18 R51C1-EP

1.eds

R51C1_EPPRO.eds

C:\Program Files (x86)\OMRON\Sysmac Studio\IO DeviceProfiles\Eip

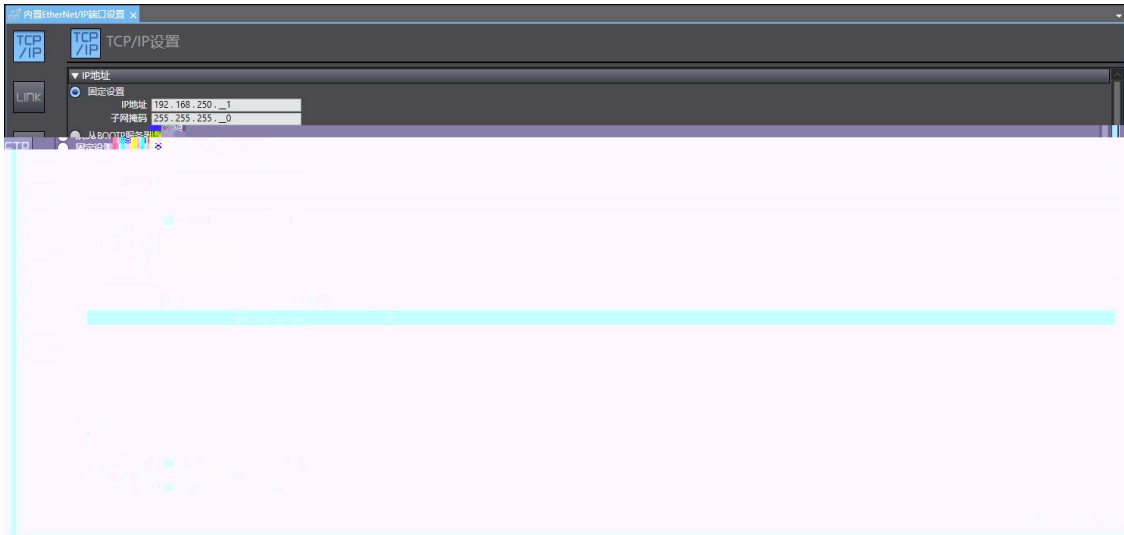
Connection\Eds

2.Sysmac Studio

PLC

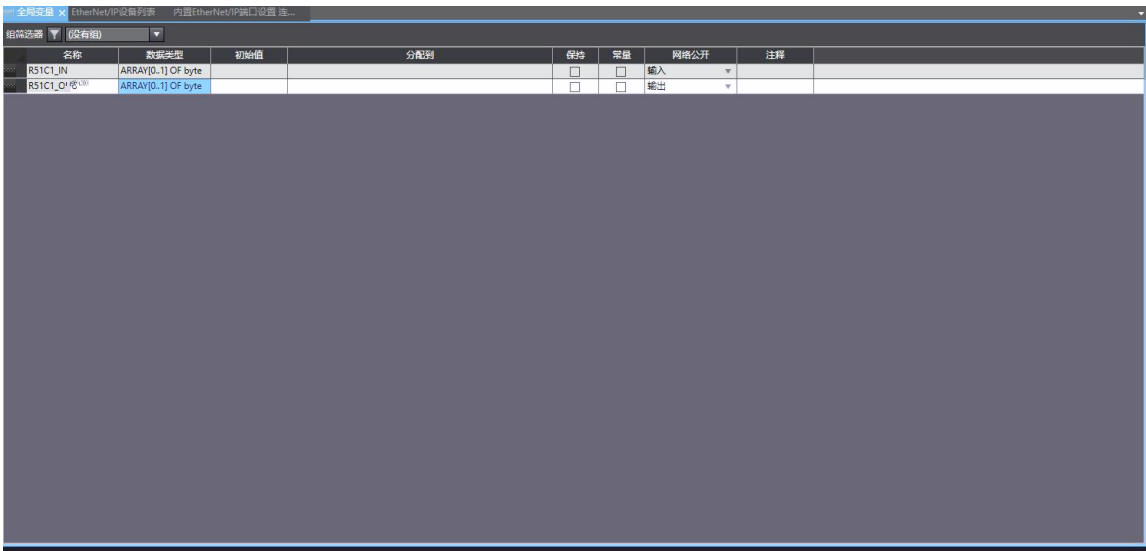


" EtherNet/IP "



IP

3. PLC

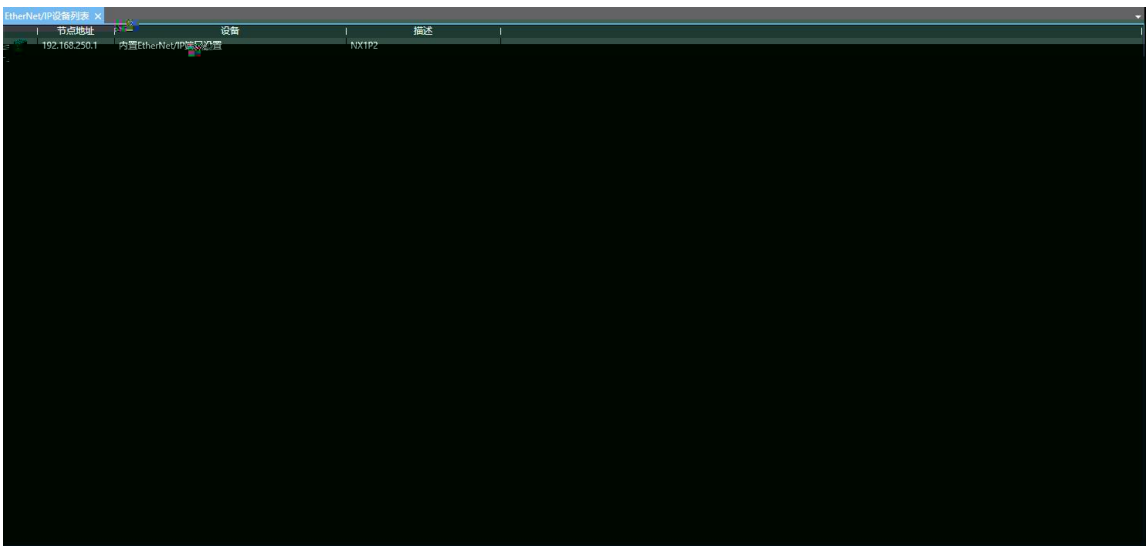


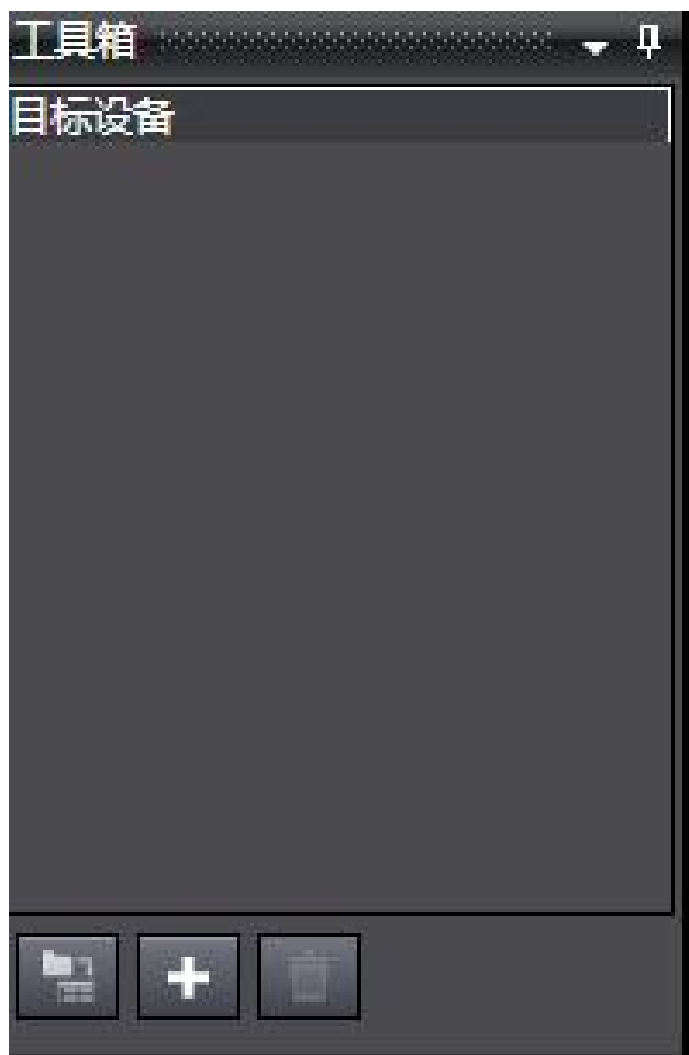
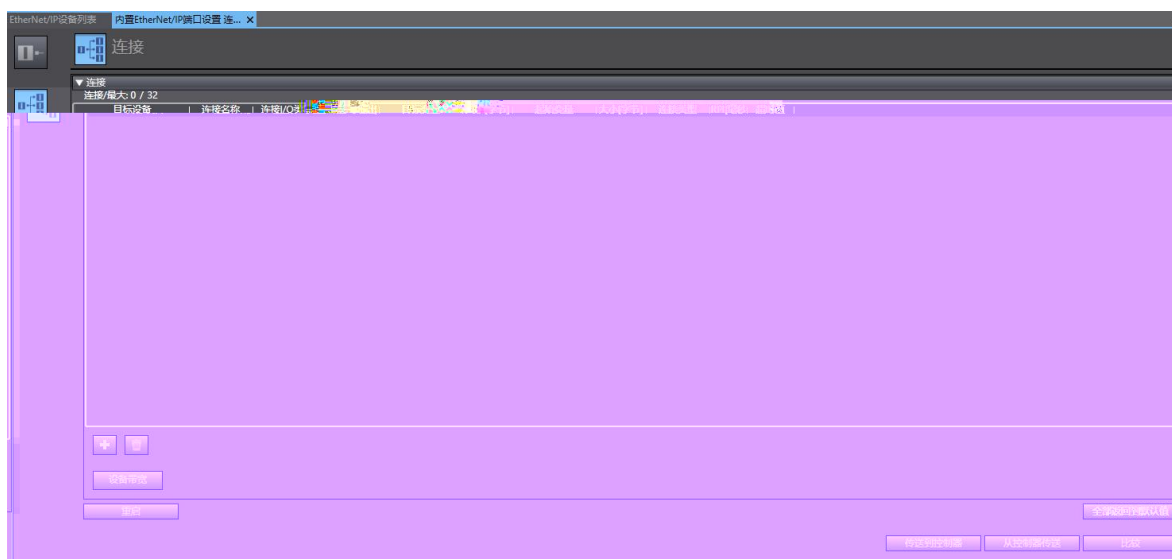
EIP

Byte

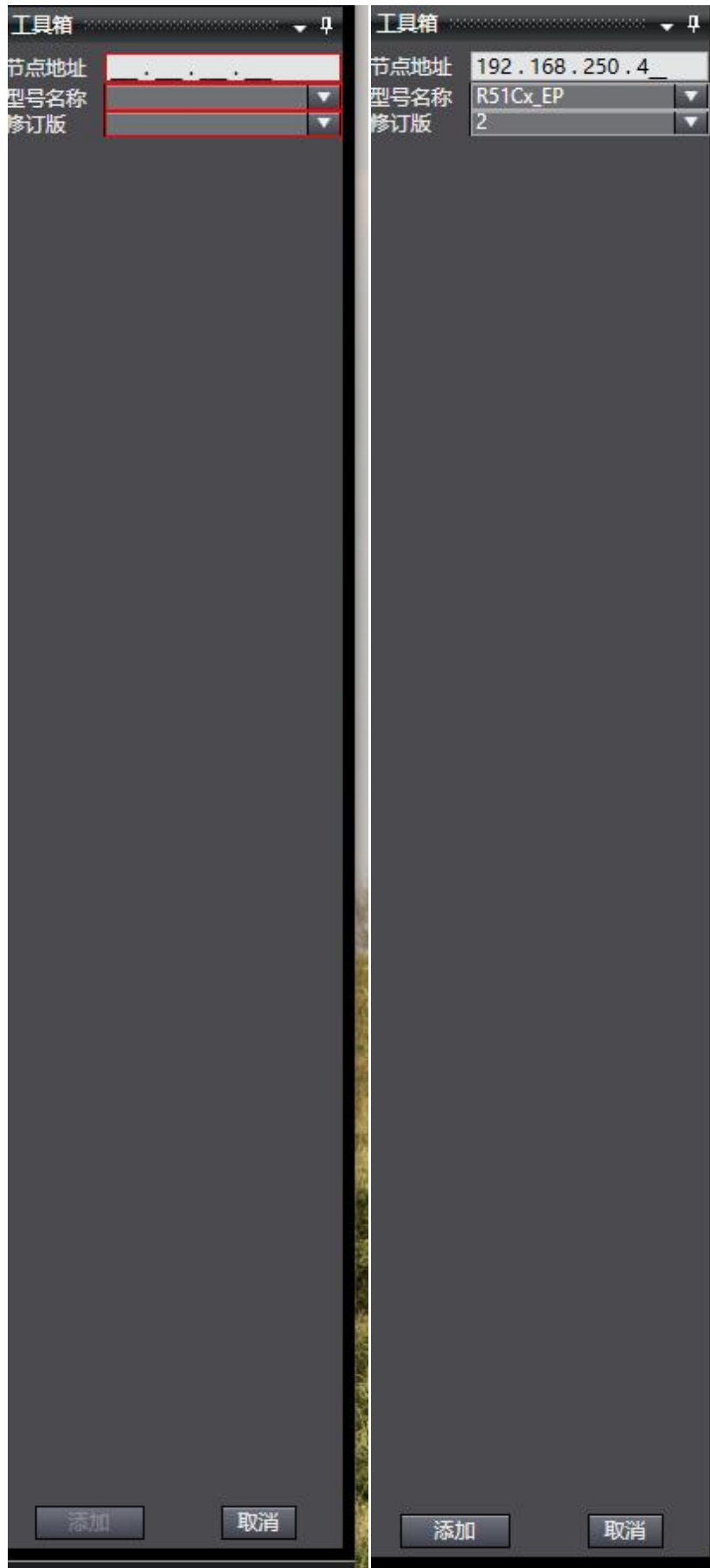
4.EIP

"EtherNet/IP"



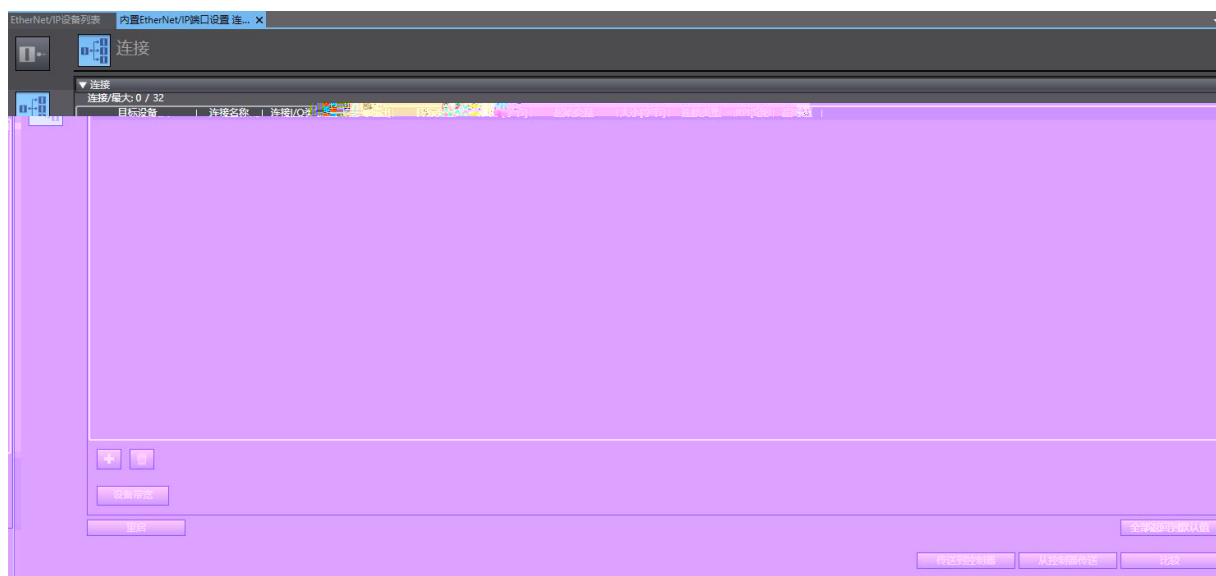


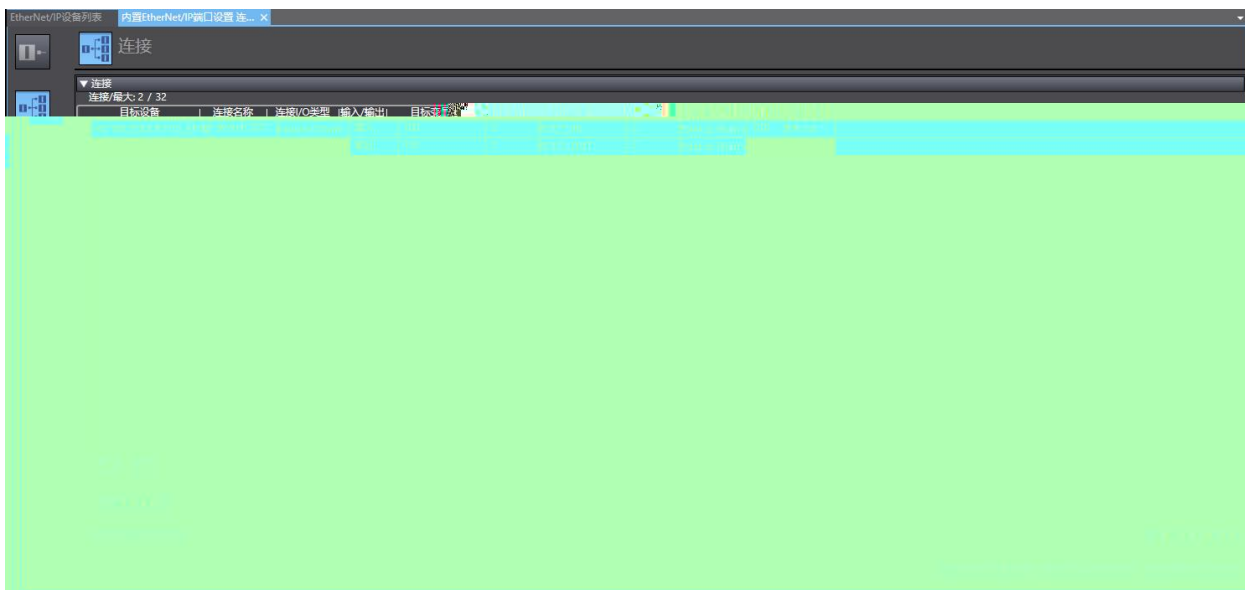
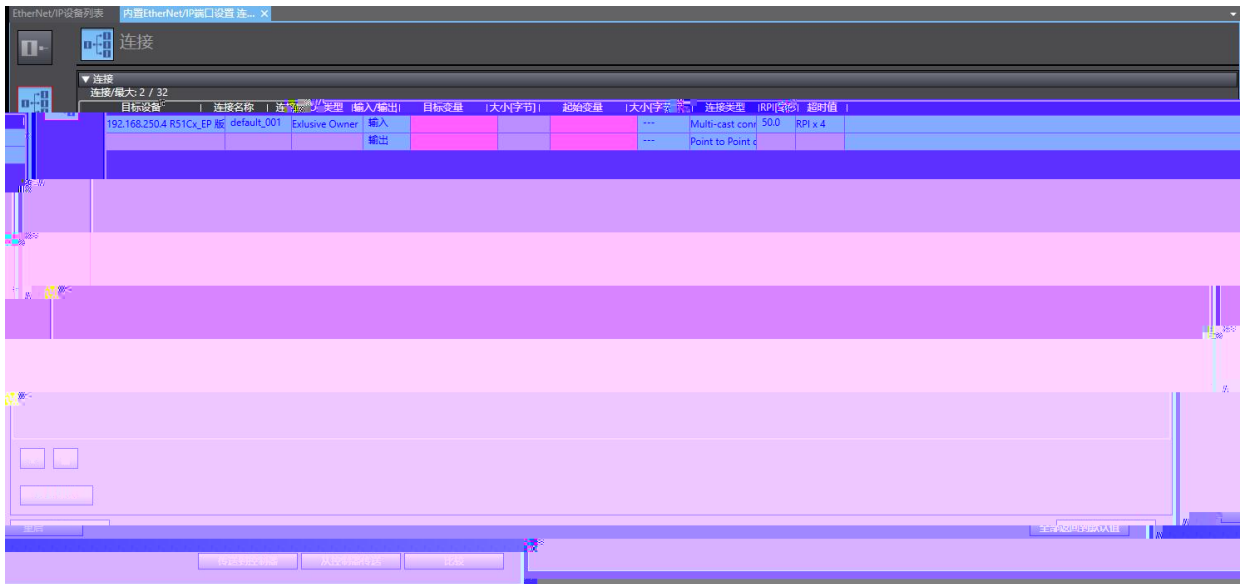
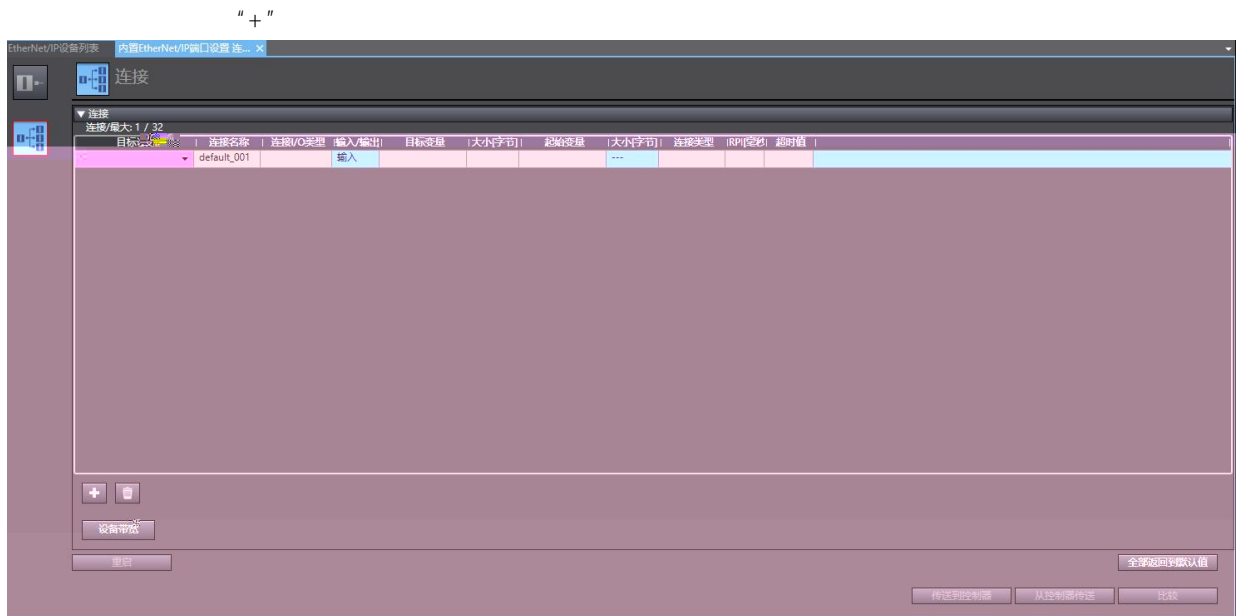
" + "

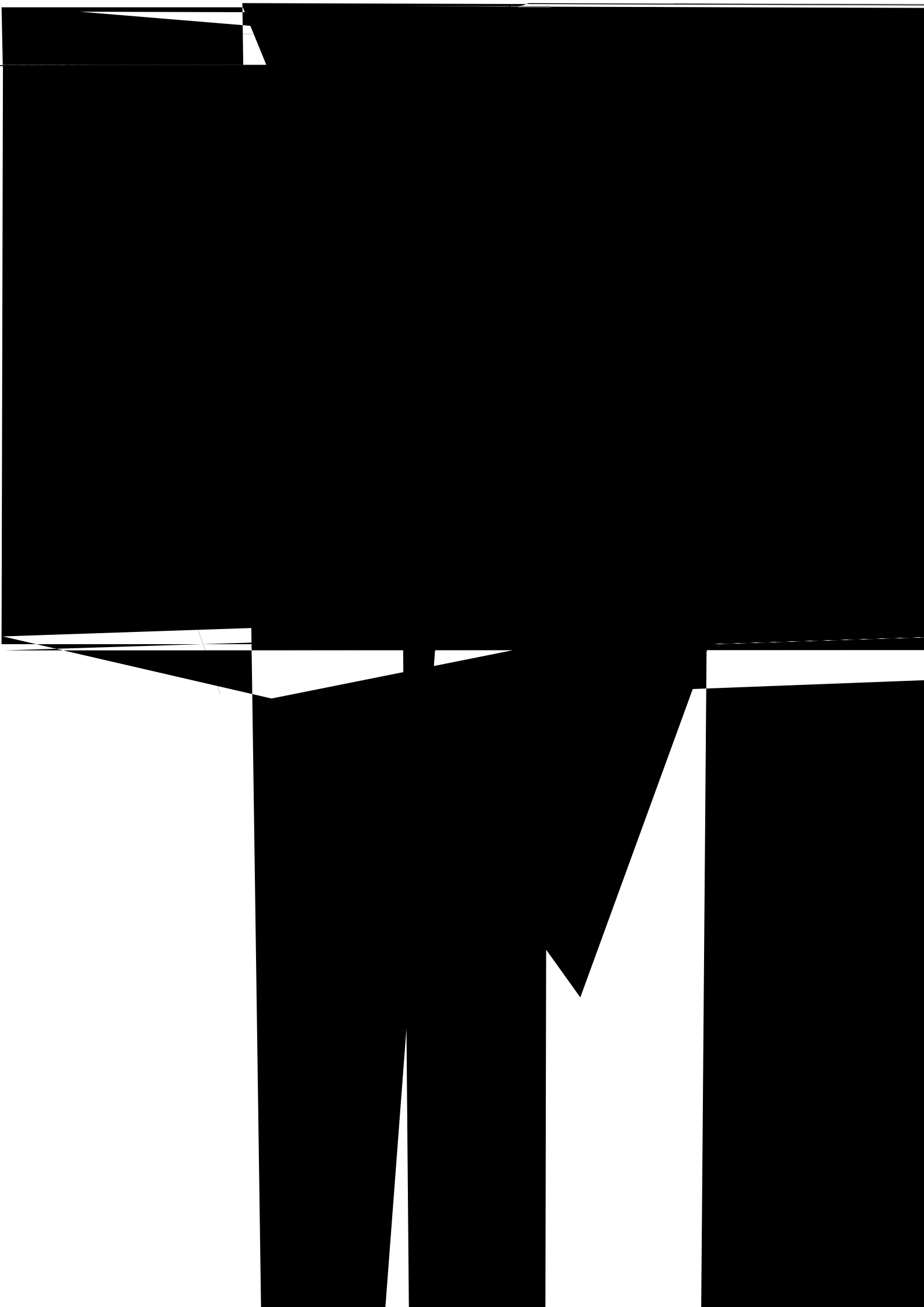


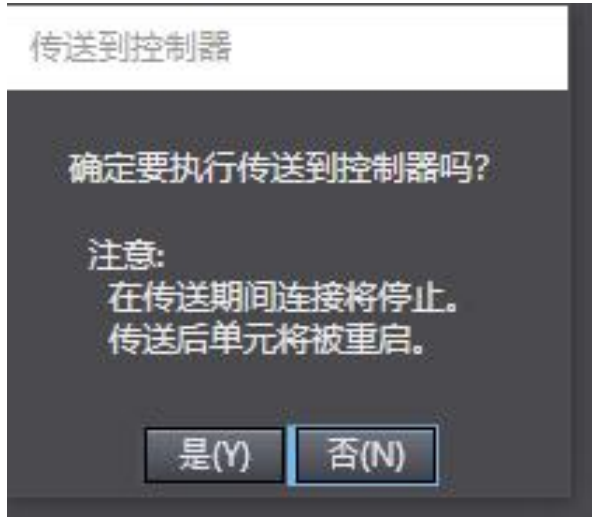


“ ”

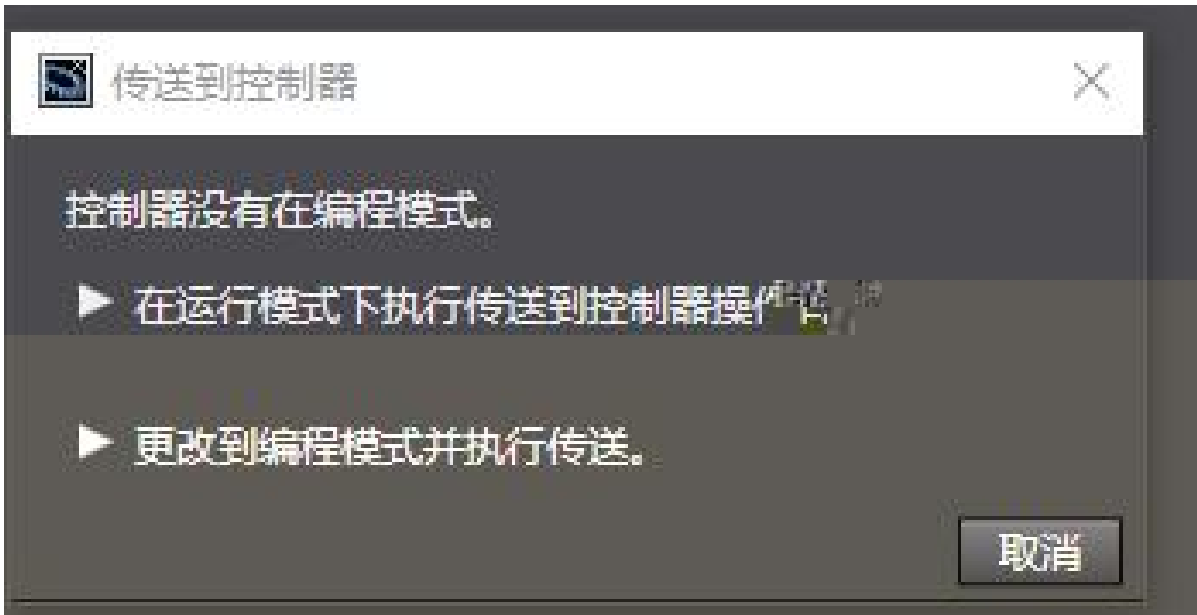








“ ”

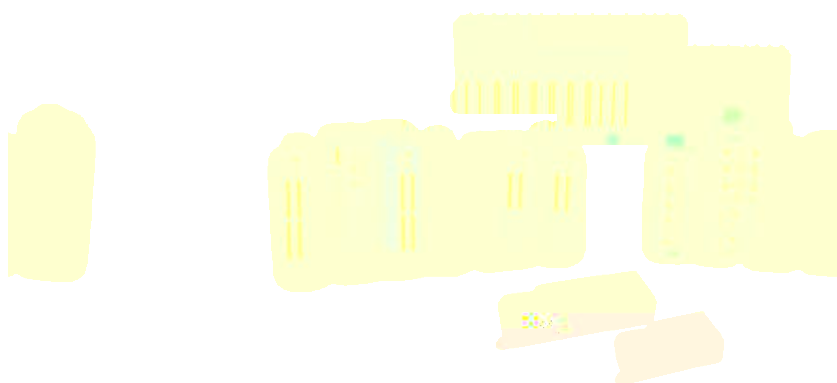


| 设备名称 | 名称 | 在线值 | 修改 | 注释 | 数据类型 | 分配到 |
|------------------|--------------|-----|----|----|------|-----|
| new_Controller_0 | RS1C1_OUT[0] | FF | | | byte | |
| new_Controller_0 | RS1C1_OUT[1] | FF | | | byte | |
| new_Controller_0 | RS1C1_IN[0] | 02 | | | byte | |
| new_Controller_0 | RS1C1_IN[1] | 00 | | | byte | |
| new_Controller_0 | 输入名称 | | | | | |



读科自读
LATCOS

www.latcos.cn



www.latcos.cn