

凌科自动化

JP-CE

L

PLC

CCLINK_IE_Field Basic JP-CE L PLC



2023-04-20

2023 04 20

2023 04 20

1.

L PLC CCLINK_IE_Field Basic JP-CE IO

2.

L PLC CCLINK_IE_Field Basic JP-CE IO GX-WORKS2
IO

3.

- GX-WORKS2

4.

4.1

1. L PLC IO
2. PLC Ethernet CCLINK_IE_Field Basic IO

4.2

1. LAEconfig IP IP
192.168.0.x
2. GX-WORKS2 PLC

新建 ×

系列(S):

机型(T):

工程类型(P):

使用标签(L)

程序语言(G):

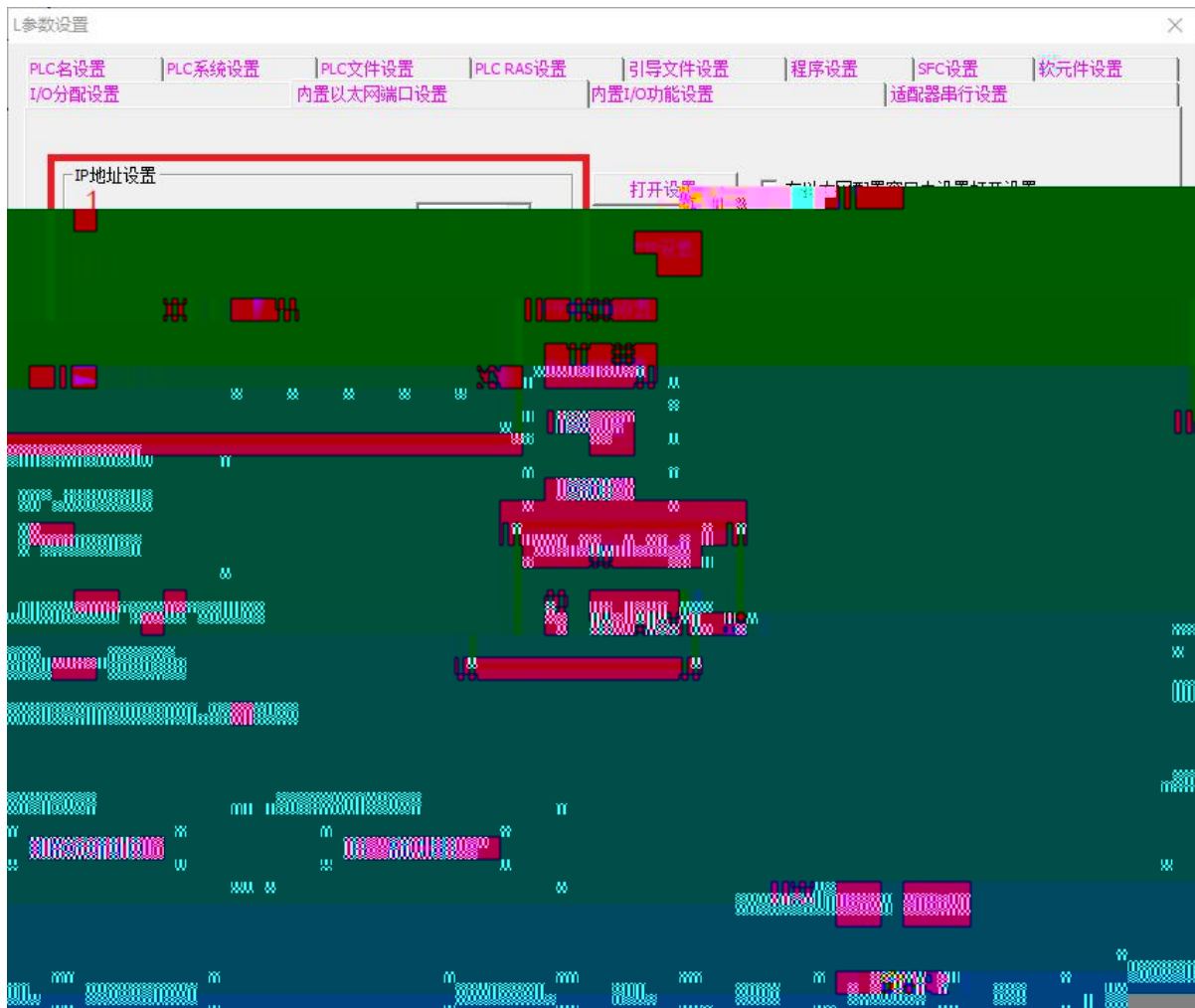
3.

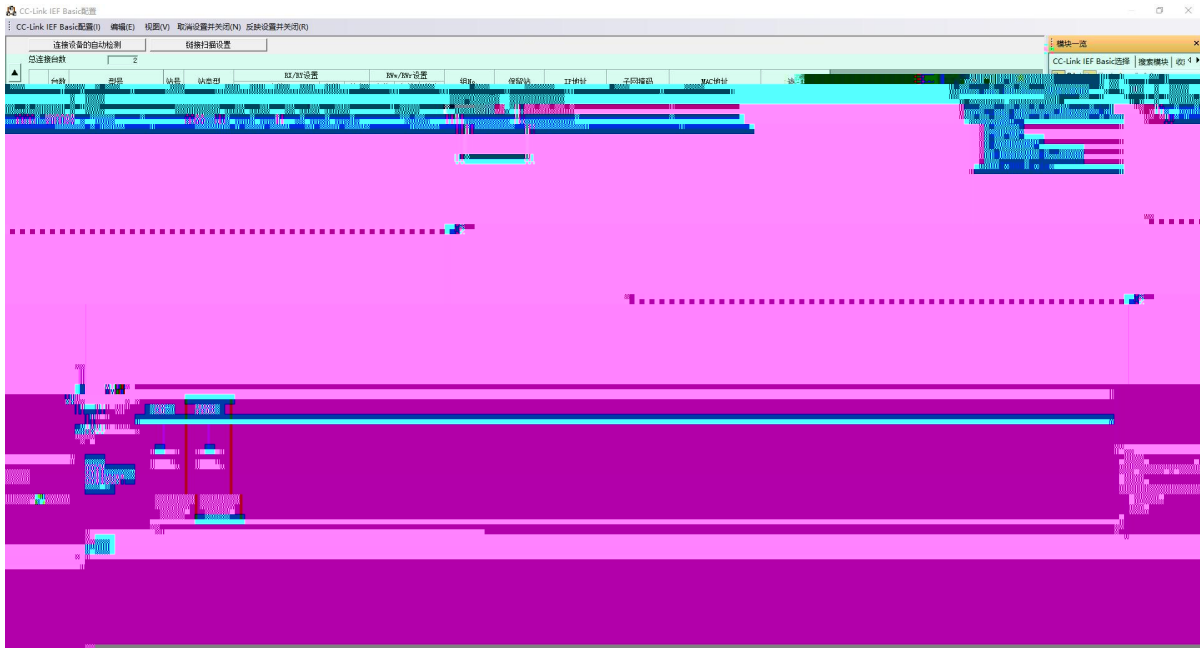


4.

IP

CC-Link IEF Basic





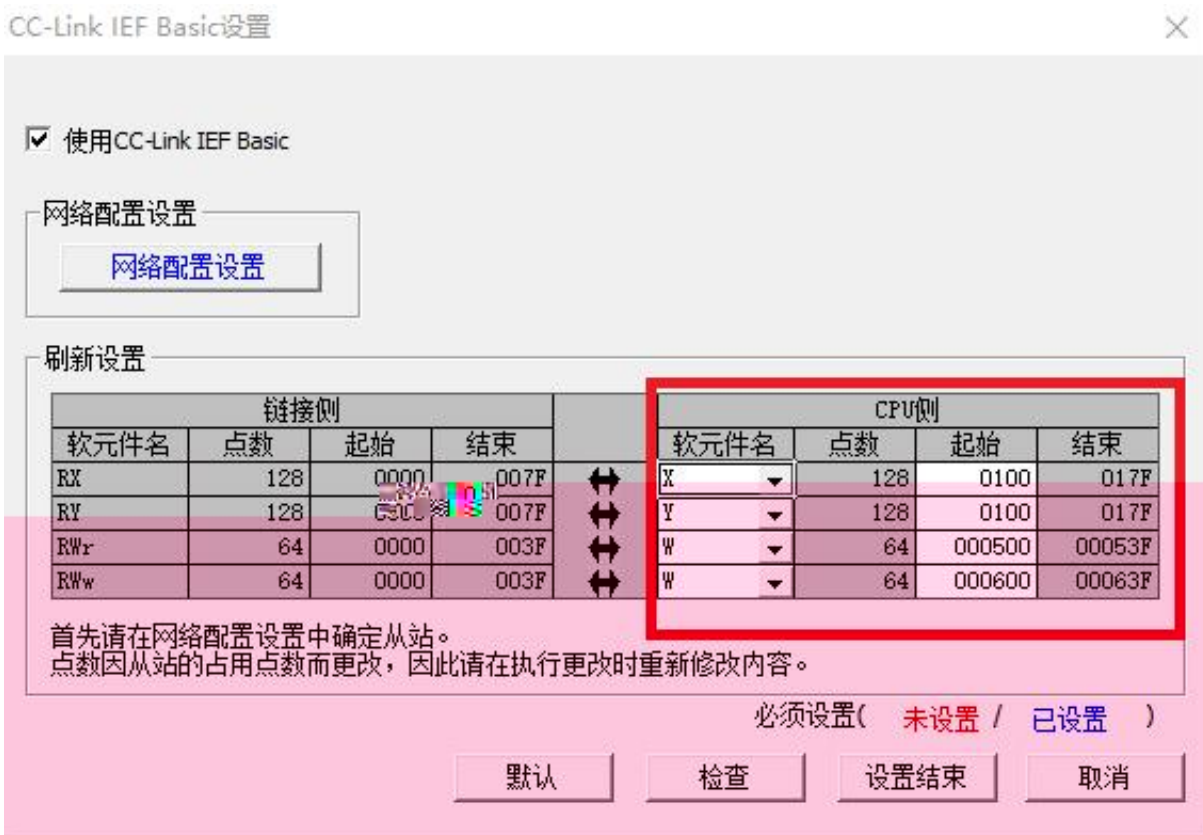
8. PLC

X Y

JP-CE 192.168.3.1

RWr RWw

JP-CE 192.168.3.2



JPD1616X-CE16 16
JPD0808X-CE8 8

192.168.3.1 16 16
192.168.3.2 16 16

X100--X117
X140--X147

Y100--Y117
Y140--Y147

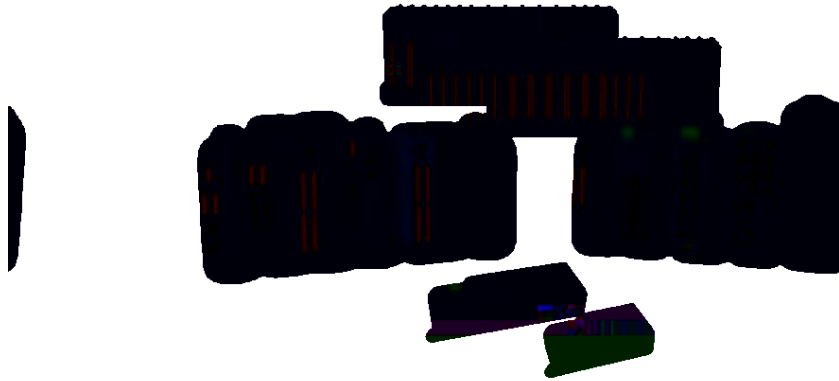
9. CC-Link IEF Basic





源科自造
LATCOS

源科自造 源科自造



www.latcos.cn

3

0510-85888030

7 701