



LUC

KV8000

ethernetip)

Ethernet/IP LUC

KV8000



2023-3-23

2023 03 23

20223 03 23

1.

KV STUDIO Ver.10G

2.

KV8000                  Ethernet/IP                  IO                  KV STUDIO Ver.10G  
IO                                  .eds                                  IO

3.

- KV STUDIO Ver.10G
- IO                          SRX\_EP20221128.eds

4.

4.1

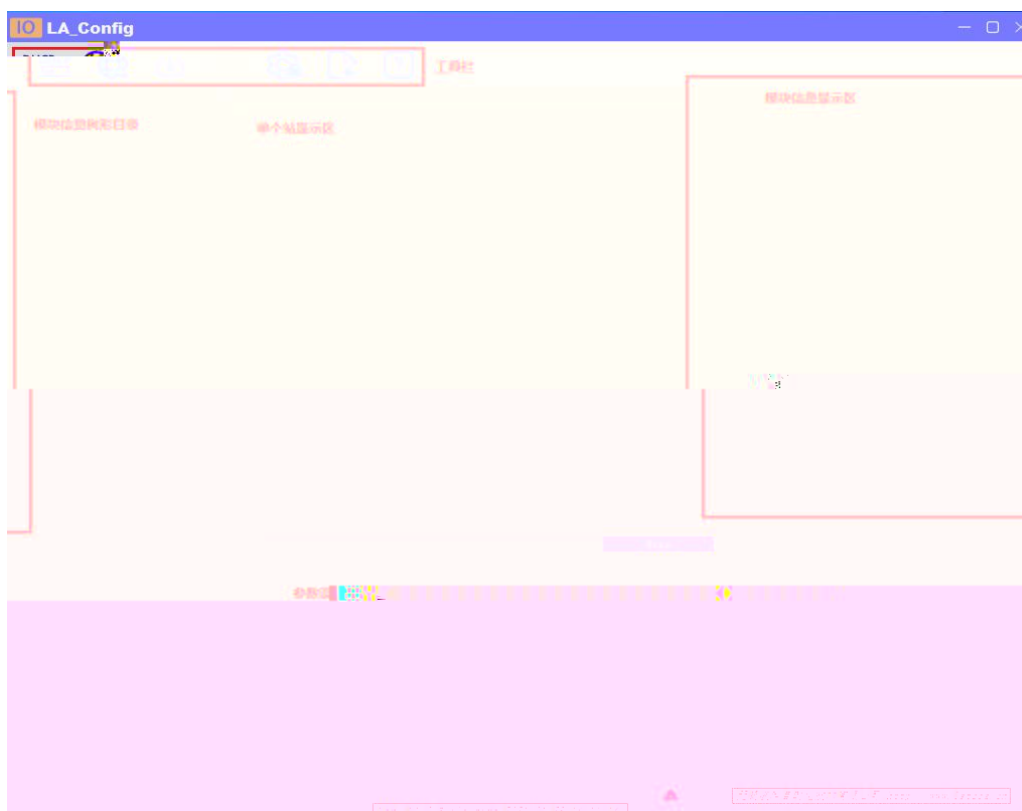
- 1. KV8000                  IO
- 2.                  PLC   Ethernet                          IO

4.2

IP

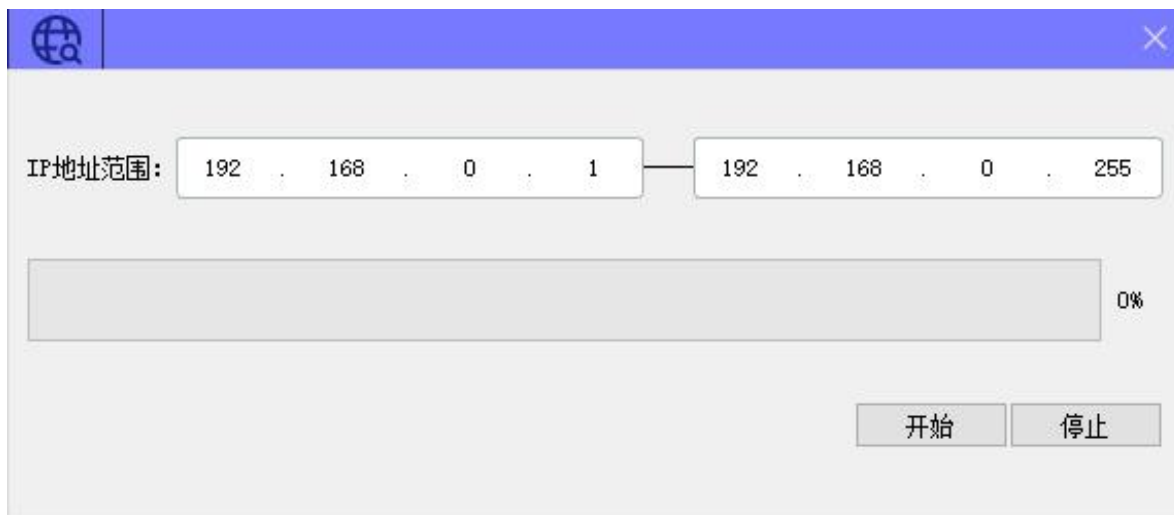
4.2.1

LAEConfig                  IP                          IP 192.168.0.x



DHCP 扫描 下载 监控 参数 描述文 帮助  
服务 模块 参数 件导入

4.2.2

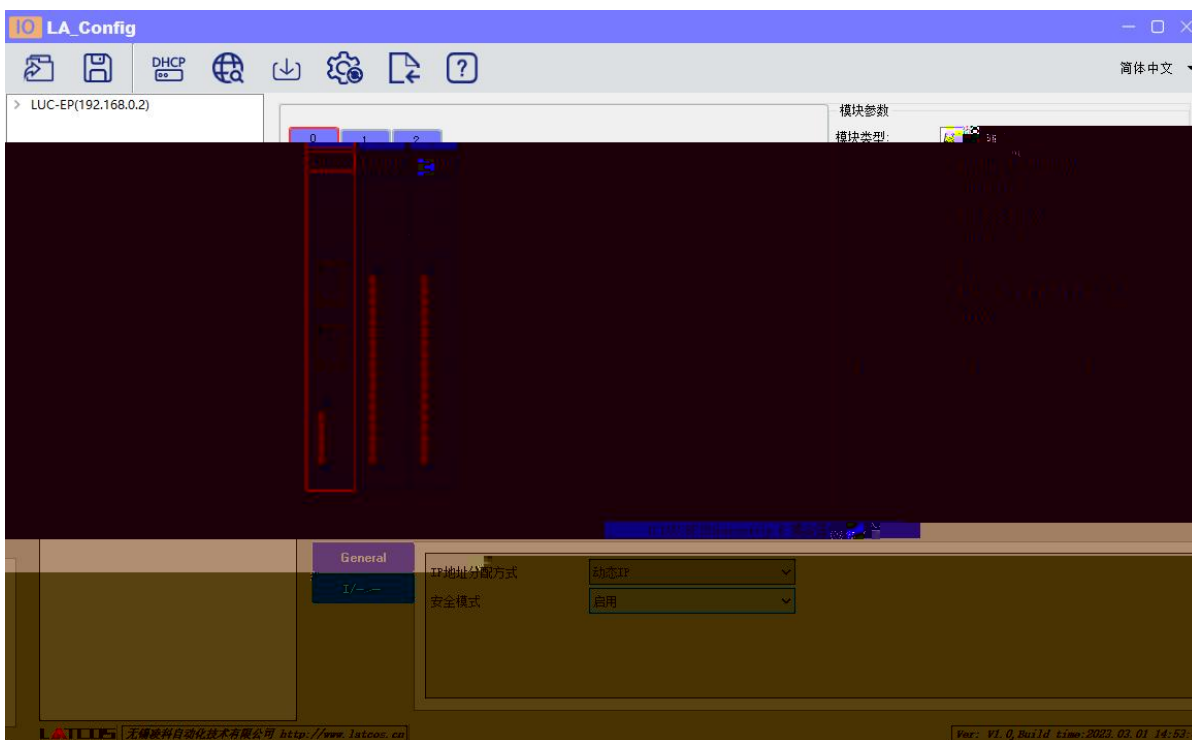


IP

IP

" "

IP



4.2.3

IP

1

"IP

IP"



DHCPService

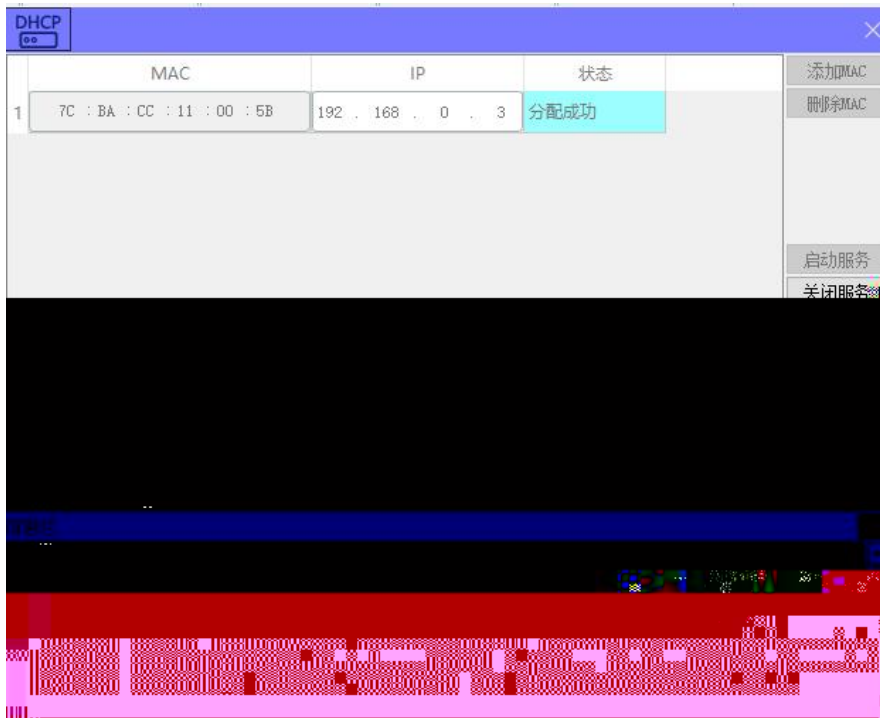
" MAC" " MAC"

MAC

IP

" "

IP



" "



mac	IP地址	子网掩码	默认网关	模块名称	状态
-----	------	------	------	------	----

扫描时间 5 :S    全局扫描    修改IP    恢复出厂设置    重启模块

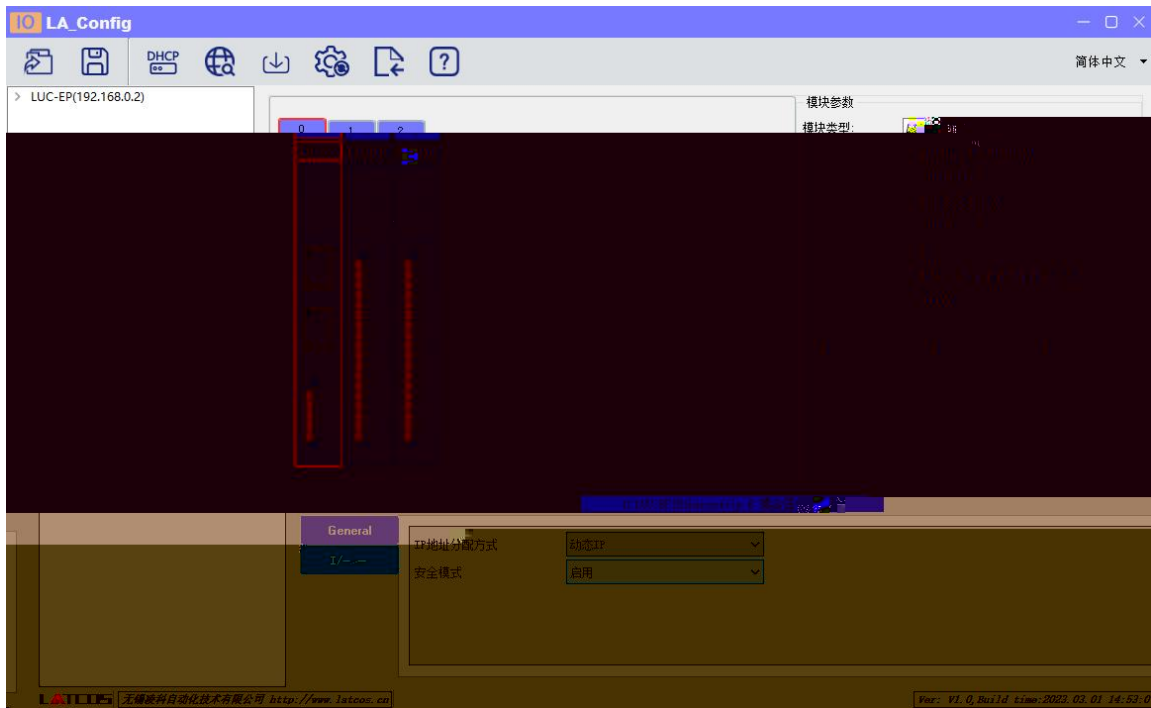
mac	IP地址	子网掩码	默认网关	模块名称	状态
00:0C:29:54:00:01	192.168.0.3	255.255.255.0	192.168.0.1	有线网卡	已连接

扫描时间 5 :S    全局扫描    修改IP    恢复出厂设置    重启模块

扫描进行中 100%

IP " IP" IP

4.2.4



4.2.5

/

1

2) DO\_ 0.7 DQ0.x bit  
 DQ0.x Bit0 DQ-0.0 "Error Mode"  
 bit "1" "Error Value[7..0]" bit DQ0.x

3) DO\_ 0.7 "Error Mode[7..0]" bit  
 DQ

4) "  "

5.

LUC-EPB

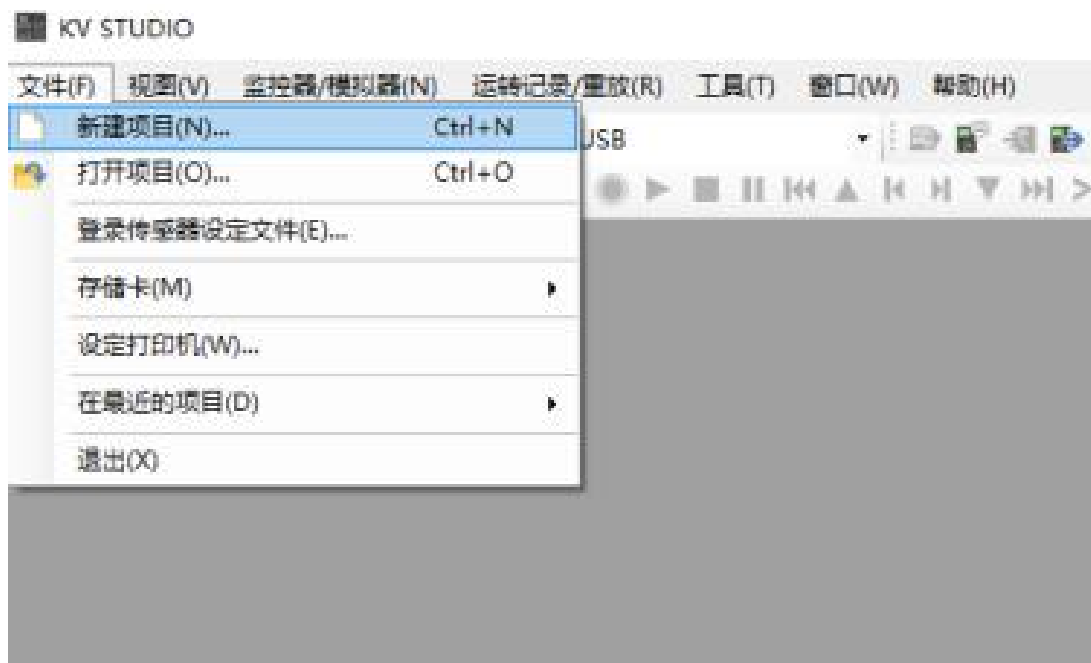
PLC(KV8000)

KV STUDIO

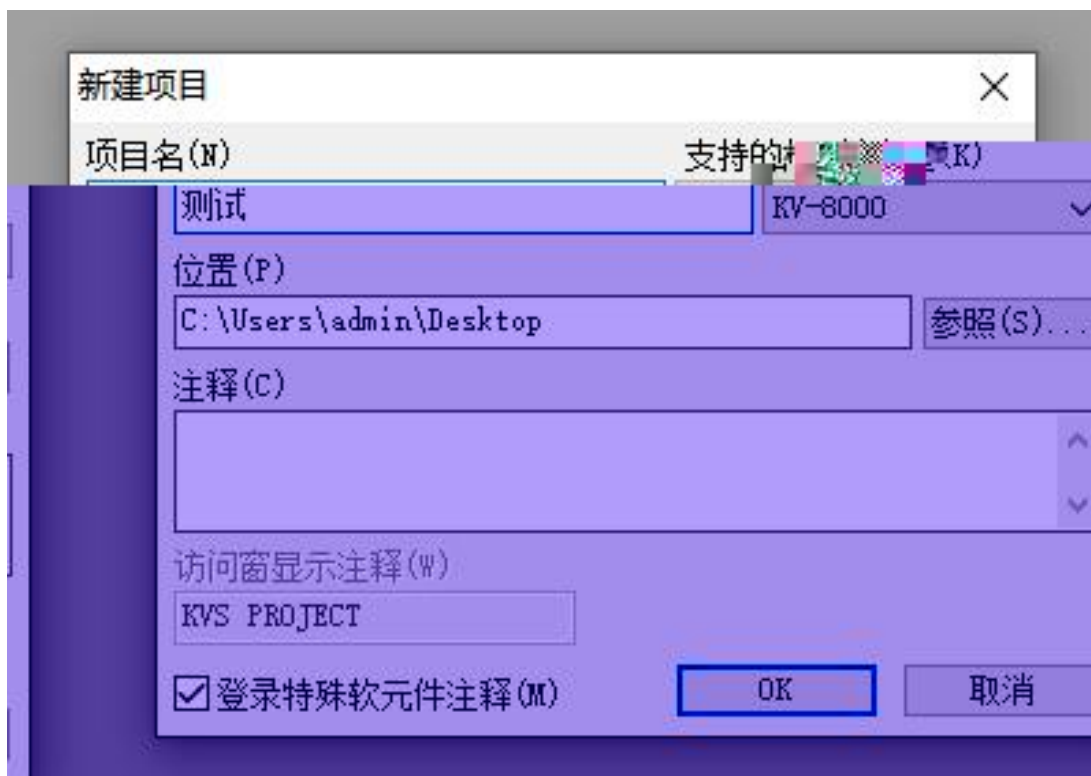
5.1

5.2

KV STUDIO

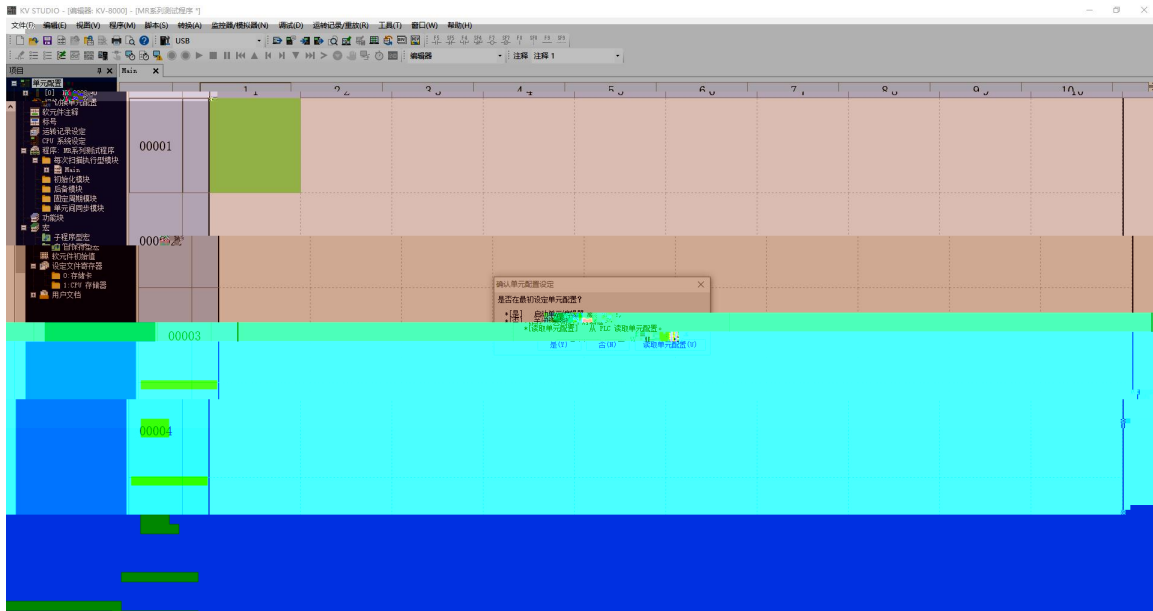


PLC



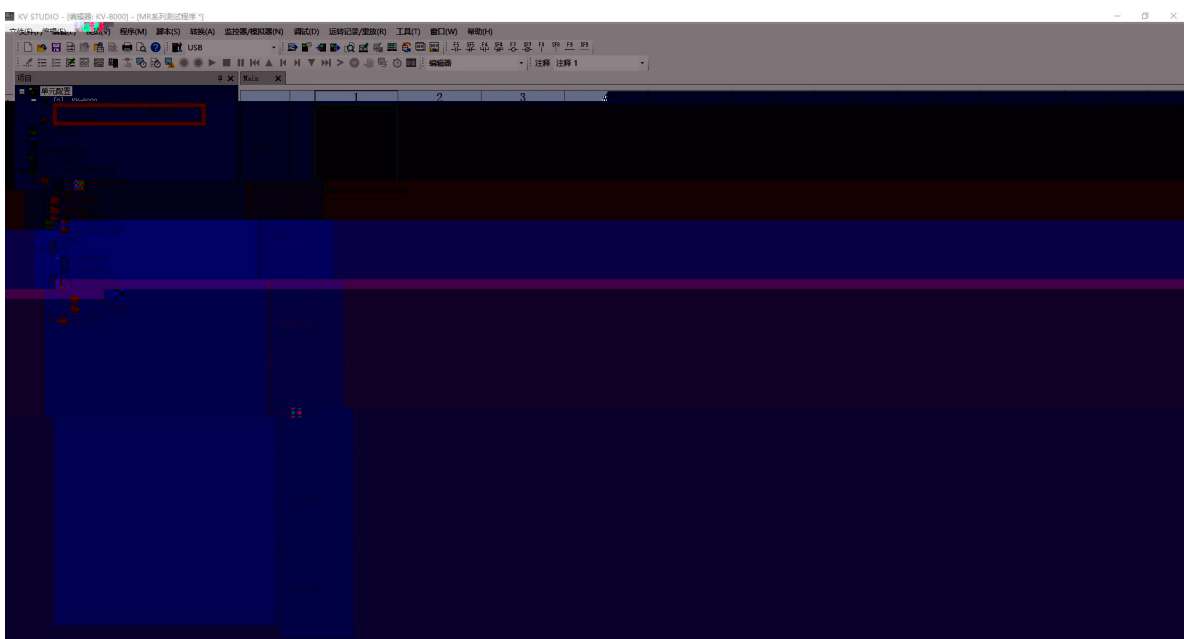


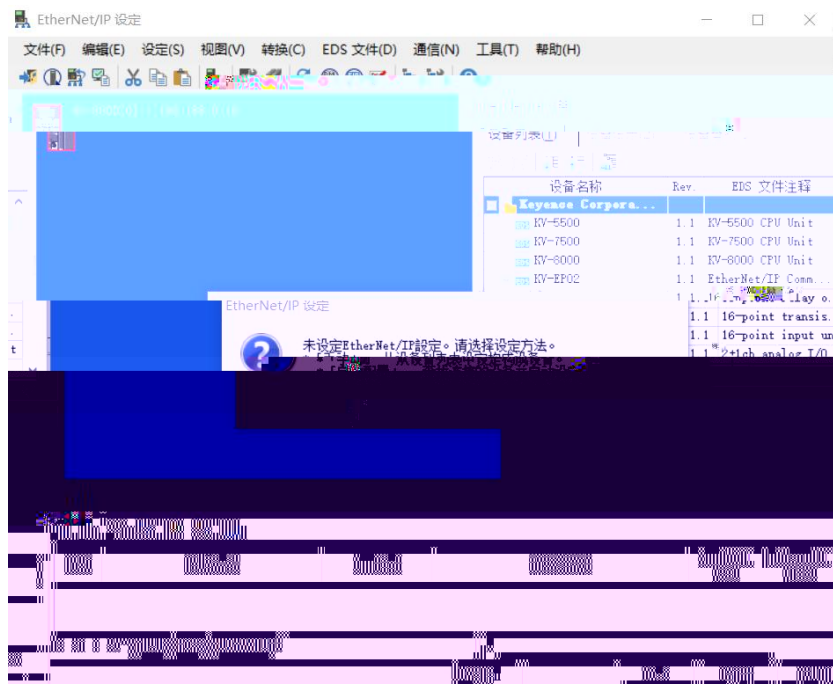
## 5.3 EtherNet/IP



PLC

EtherNet/IP





## 5.4 EDS

"EtherNet/IP" "EDS" " " "



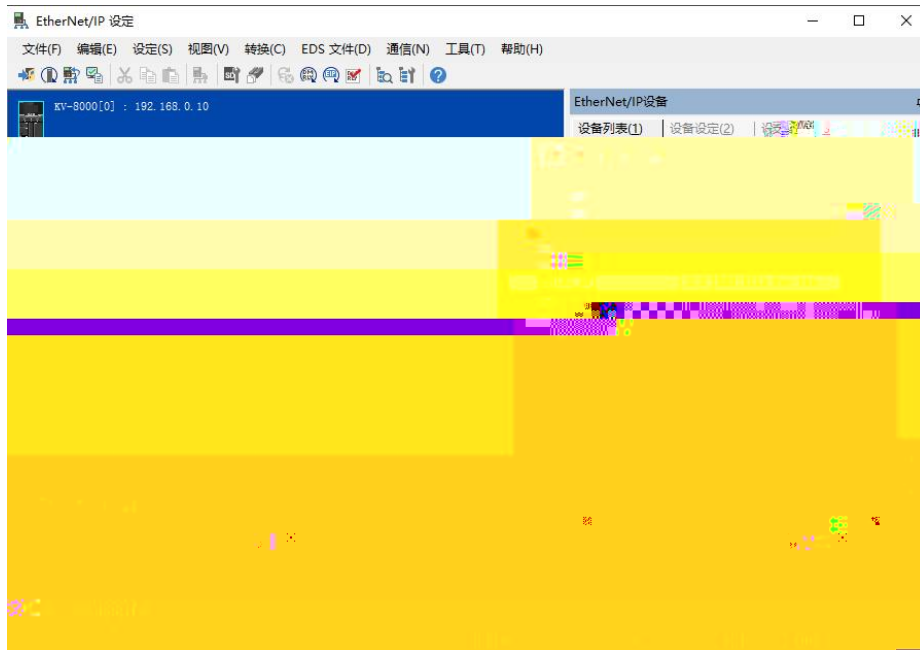
EDS

EDS



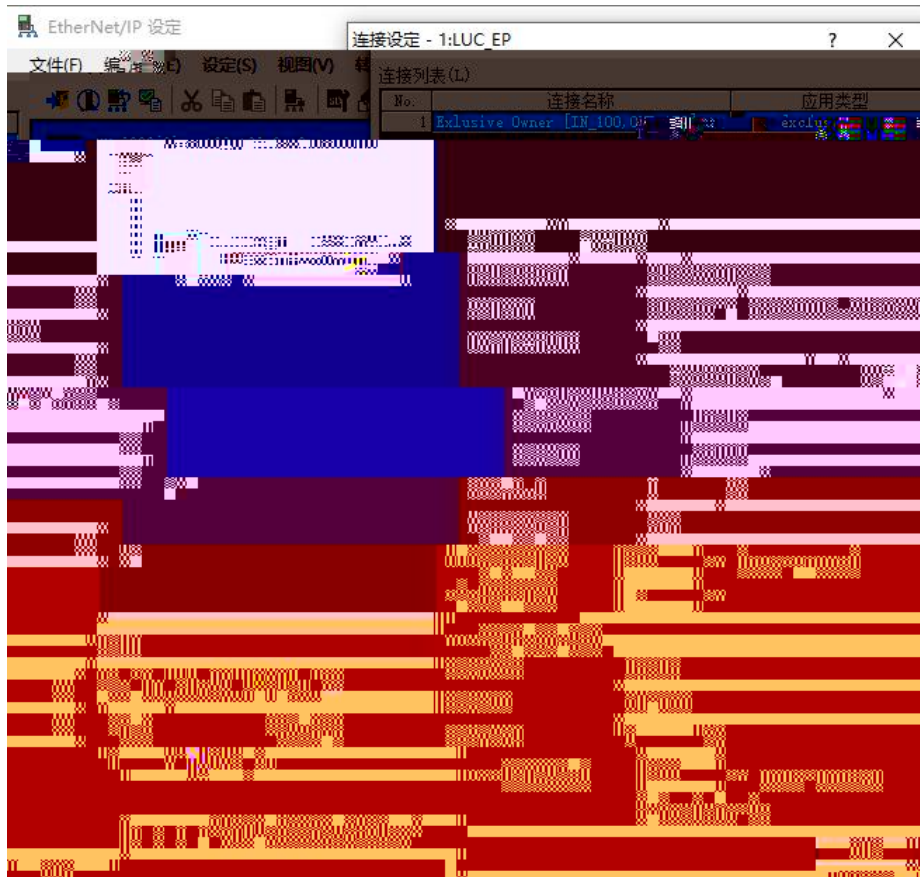
EtherNET/IP

"LUC-EP"



IP

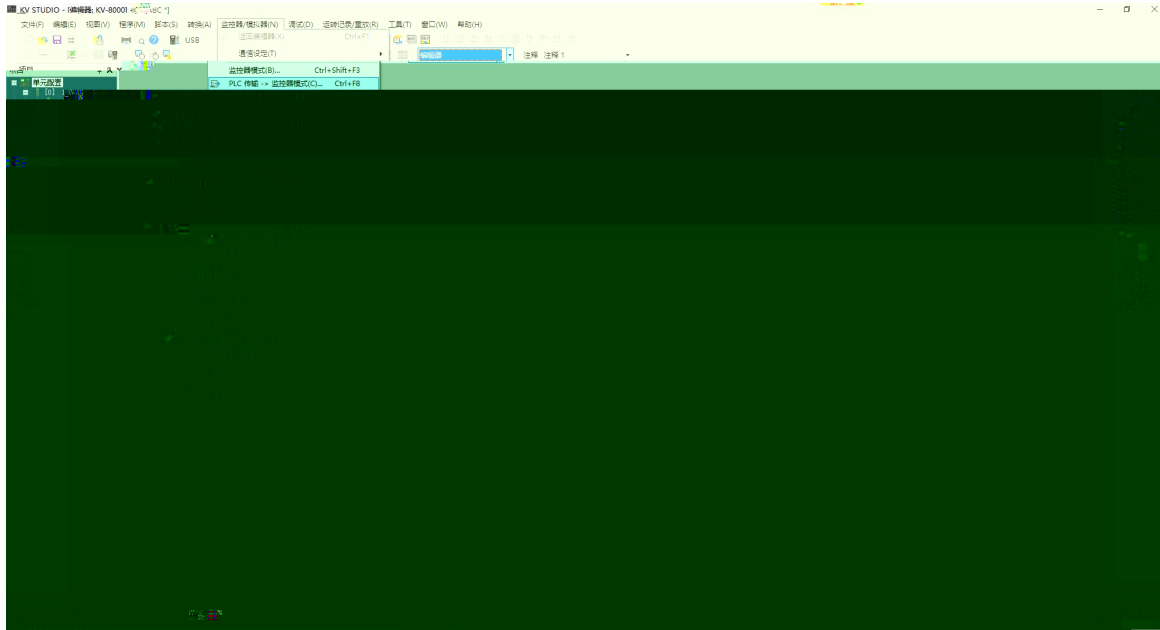
"Exclusive Owner"





PLC

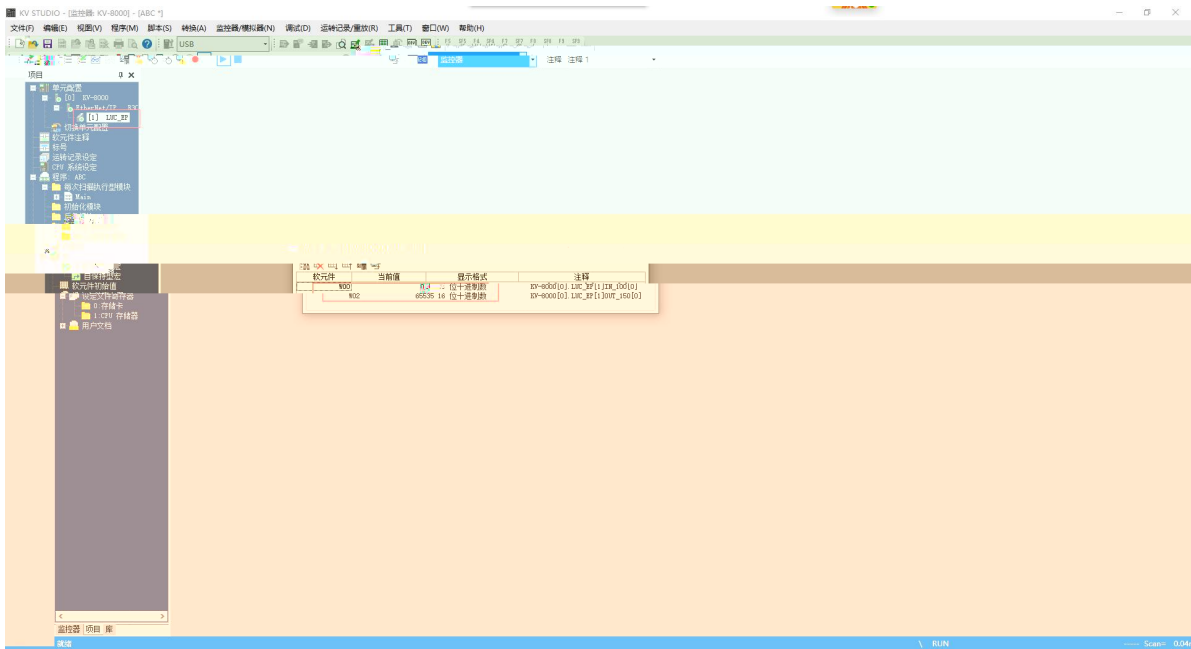
plc



5.6

PLC

" " " "



6.

1.

windows      ping      IP      ping      ping      IP

IP

2.

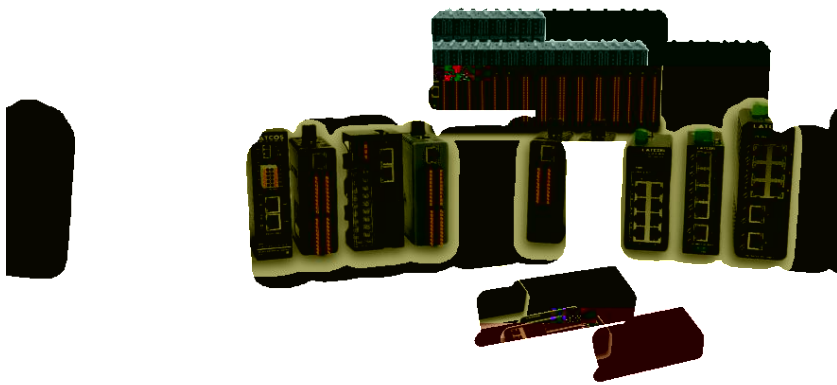
RUN      ERR      IP      IP

IP



源科自研  
**LATCOS**

源科自研 源科自研



[www.latcos.cn](http://www.latcos.cn)

3

0510-85888030

7

701