

# 透科自动化

MR

KV 8000

ethernetip)

Ethernet/IP MR

KV8000



---

2023-3-23

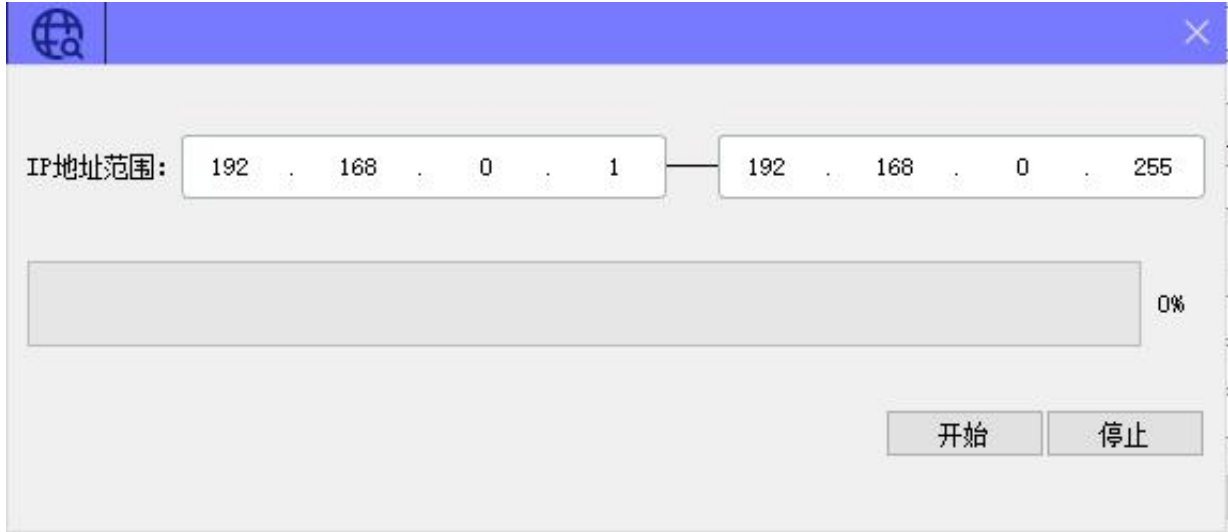
2023 03 23

20223 03 23





4.2.2

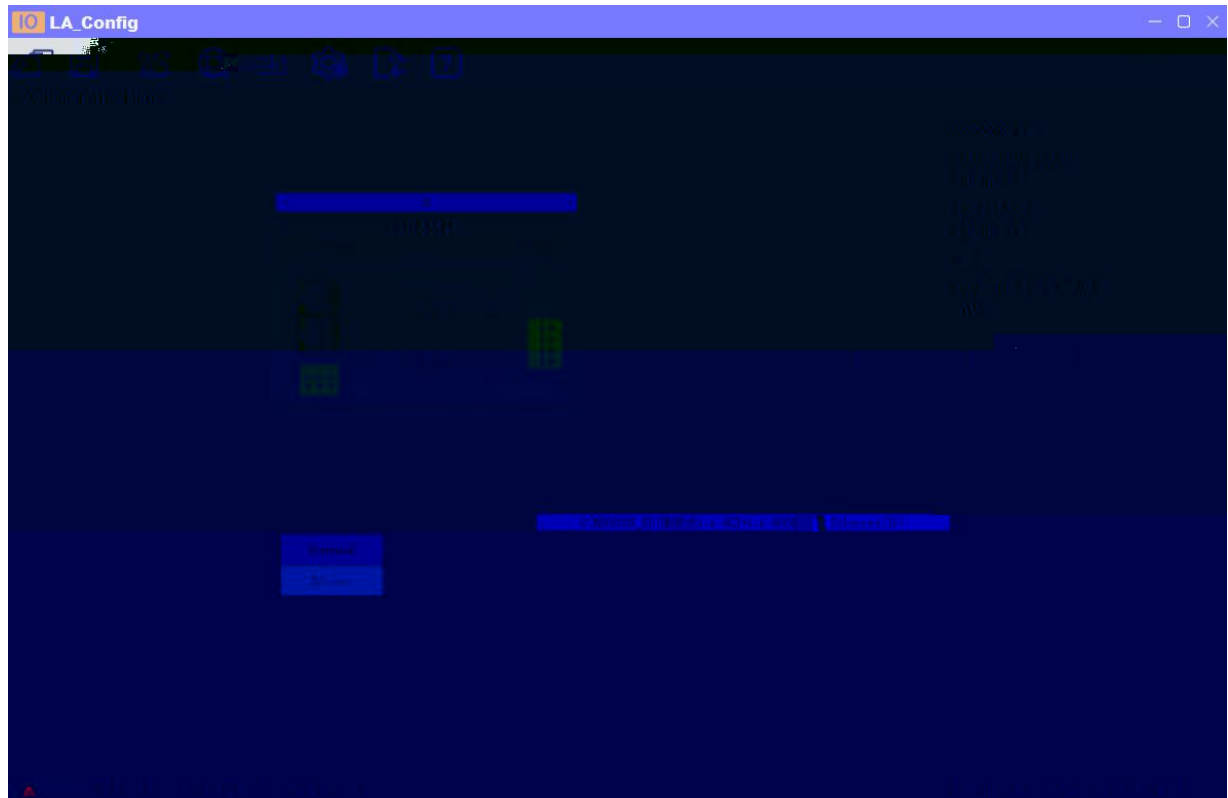


IP

IP

" "

IP



4.2.3

IP

1

"IP"

IP"

MAC	IP	状态
7C : BA : CC : 11 : 00 : 56	192 . 168 . 0 . 4	未分配

DHCP 启动单启模块申请被分配新的IP地址

信息栏

MAC DHCPService " MAC" " MAC"

IP IP " "

MAC	IP	状态
7C : BA : CC : 11 : 00 : 5B	192 . 168 . 0 . 3	分配成功

DHCP 启动单启模块申请被分配新的IP地址

信息栏

```
[04-Feb-21 13:58:14] Listening On: 192.168.0.153
[04-Feb-21 13:58:17] DHCPDISCOVER for 7c:ba:cc:11:00:5b () from interface:
00000000: 00000000 00000000 00000000 00000000 00000000 00000000 00000000 00000000
00000000: 00000000 00000000 00000000 00000000 00000000 00000000 00000000 00000000
00000000: 00000000 00000000 00000000 00000000 00000000 00000000 00000000 00000000
```



The image shows a software window with a blue title bar and a close button. Below the title bar is a table with the following headers: mac, IP地址, 子网掩码, 默认网关, 模块名称, and 状态. The table body is currently empty. At the bottom of the window, there is a control bar containing a '扫描时间' field with the value '5 :S', and four buttons: '全局扫描', '修改IP', '恢复出厂设置', and '重启模块'.

The image shows the same software window as above, but with a large pink rectangular overlay covering the table area. The table headers are still visible at the top of the overlay. At the bottom of the overlay, there is a horizontal green bar.

IP " IP" IP



5.

MR0808X-EP

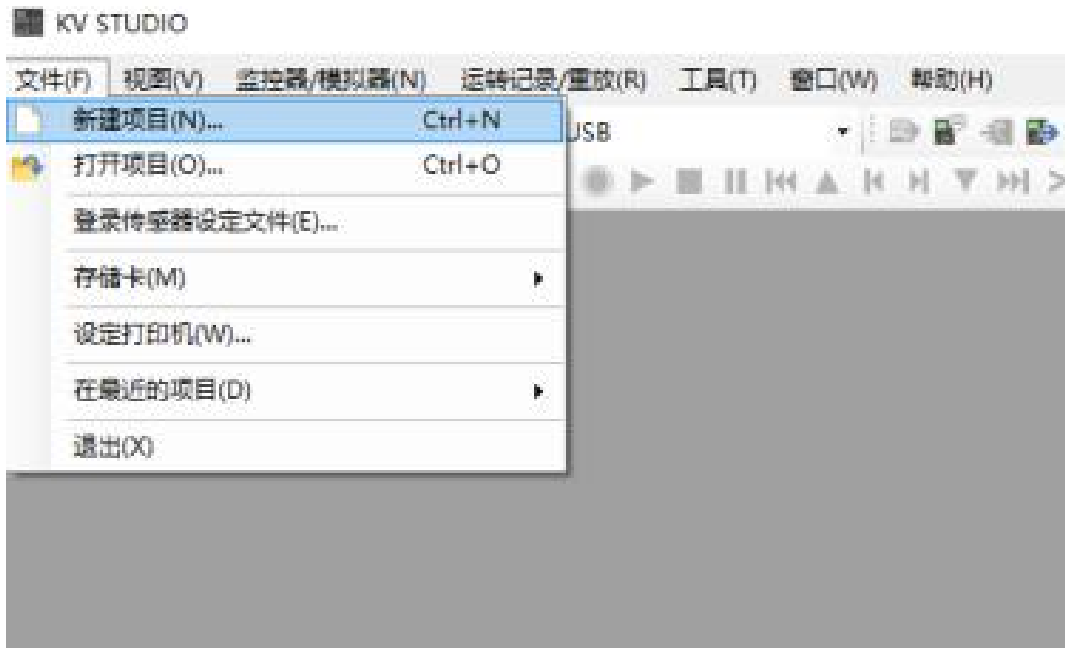
PLC (KV8000)

KV STUDIO

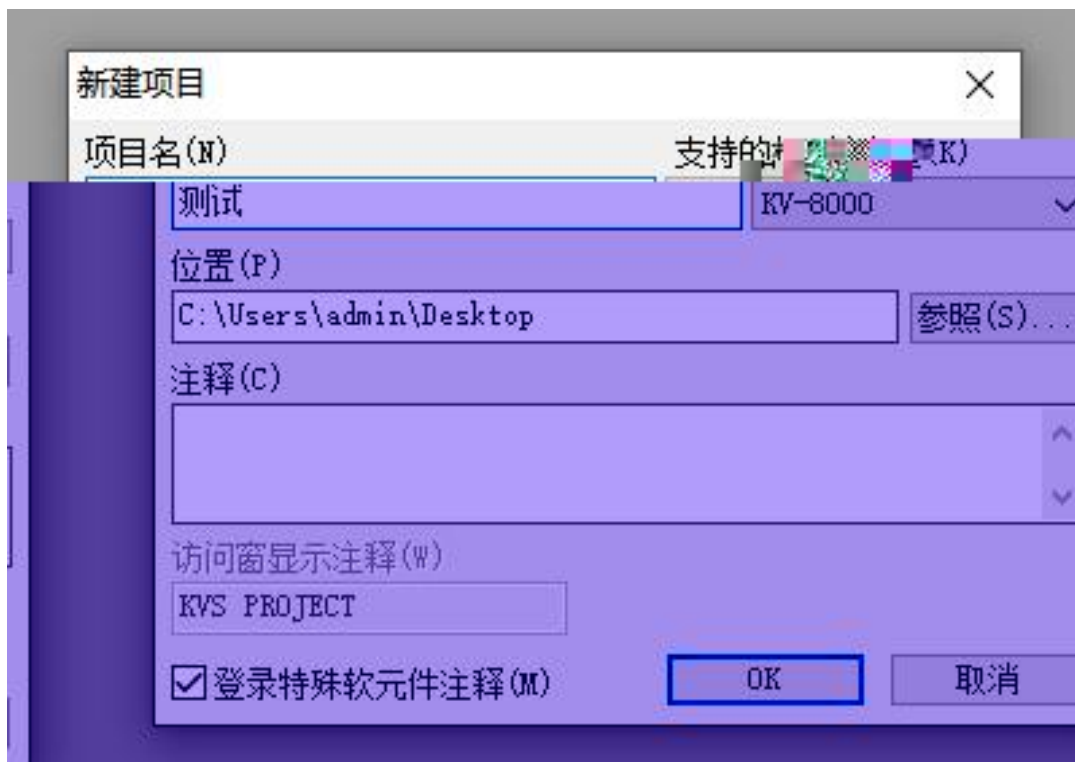
5.1

5.2

KV STUDIO

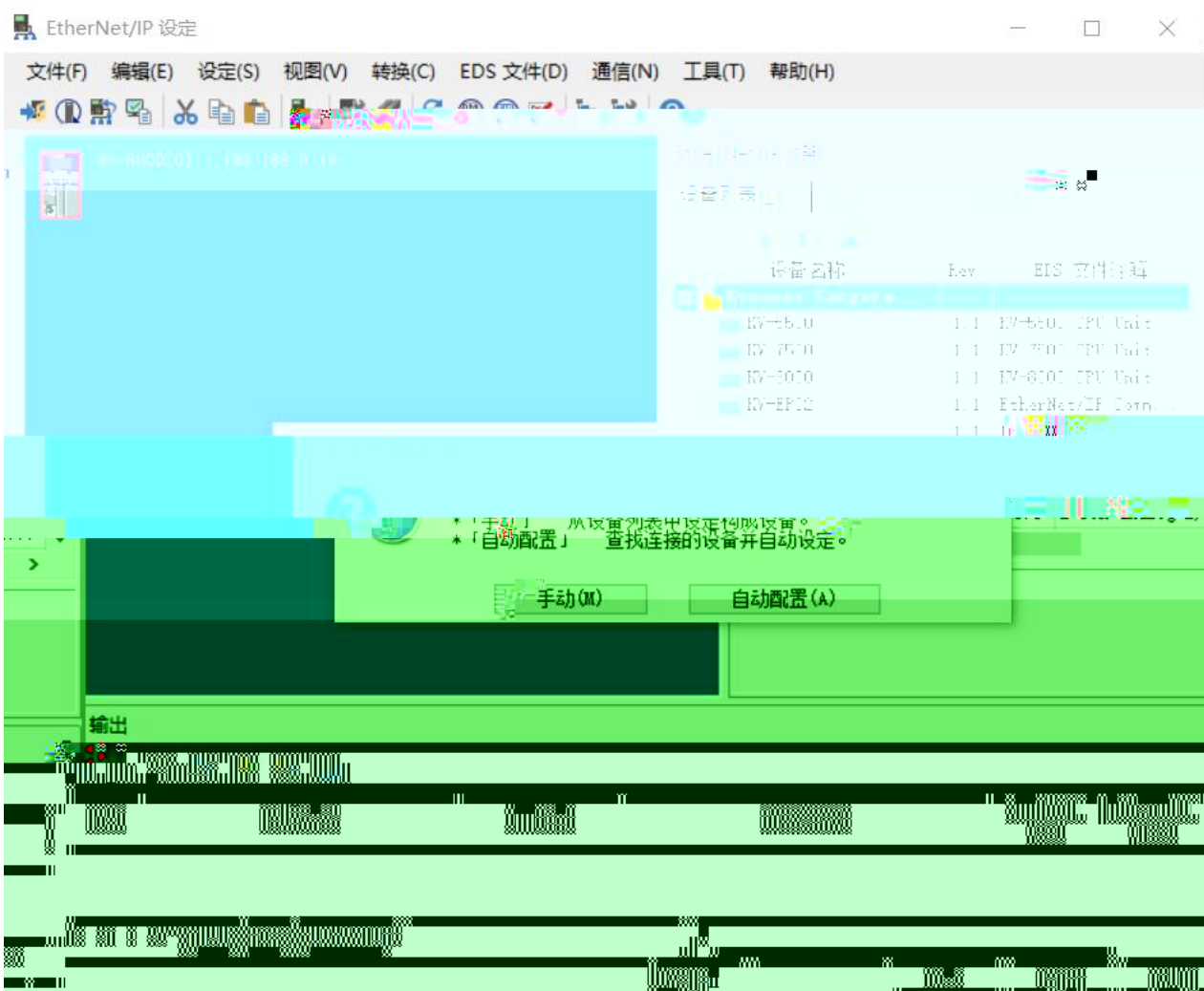


PLC









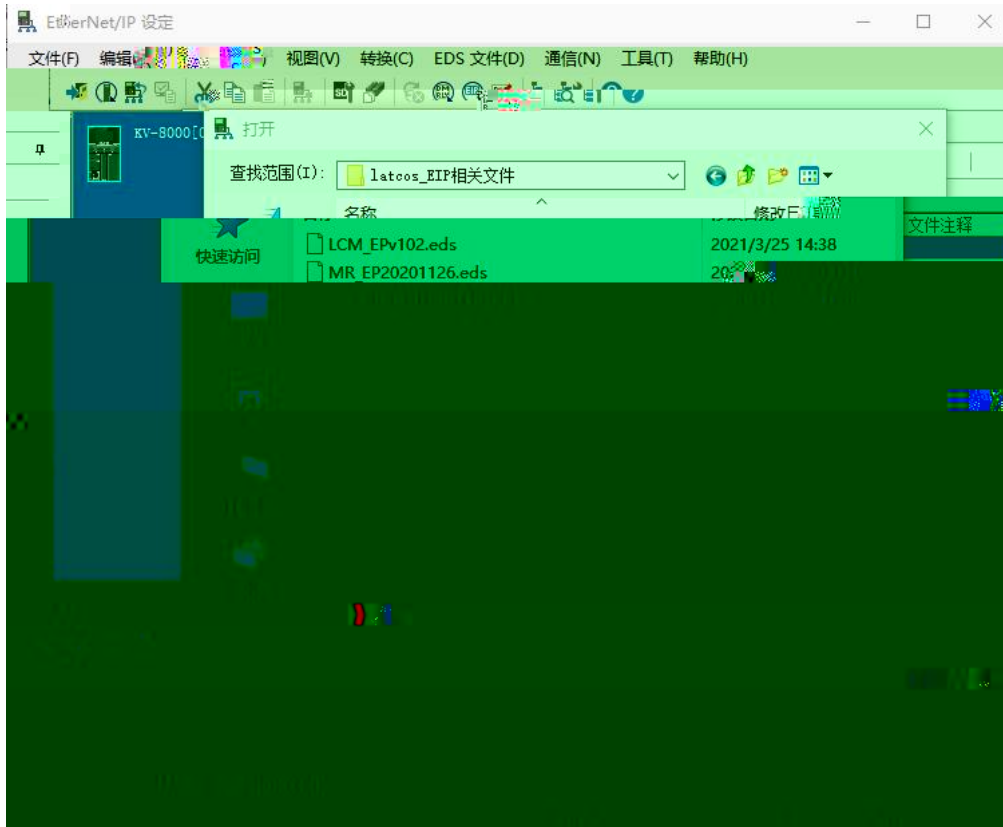
## 5.4 EDS

“EtherNet/IP” “EDS” “ ” “ ”



EDS

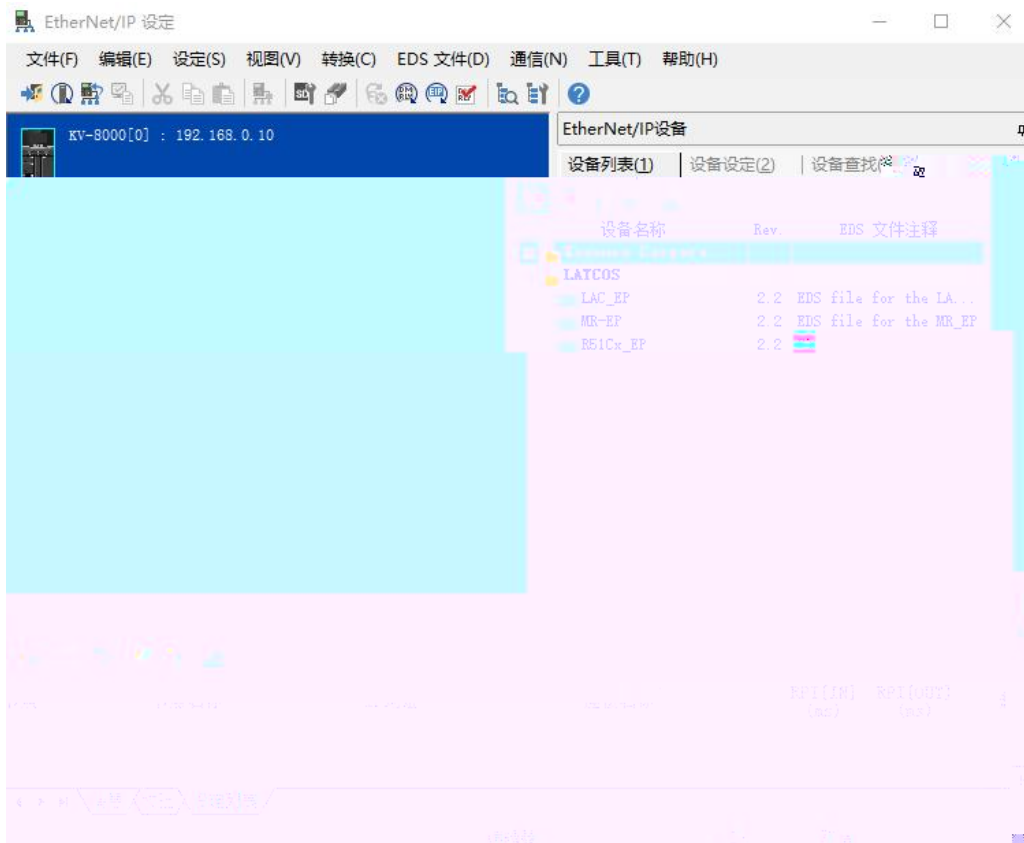
EDS

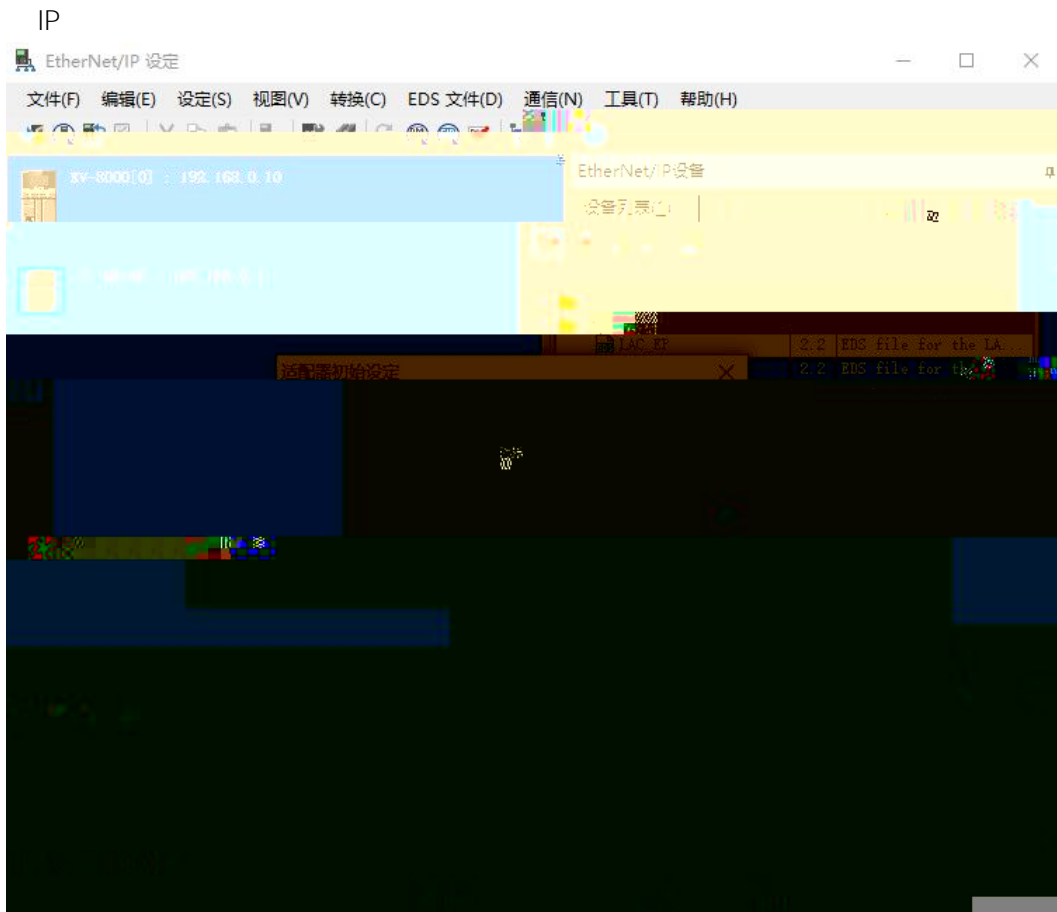


5.5

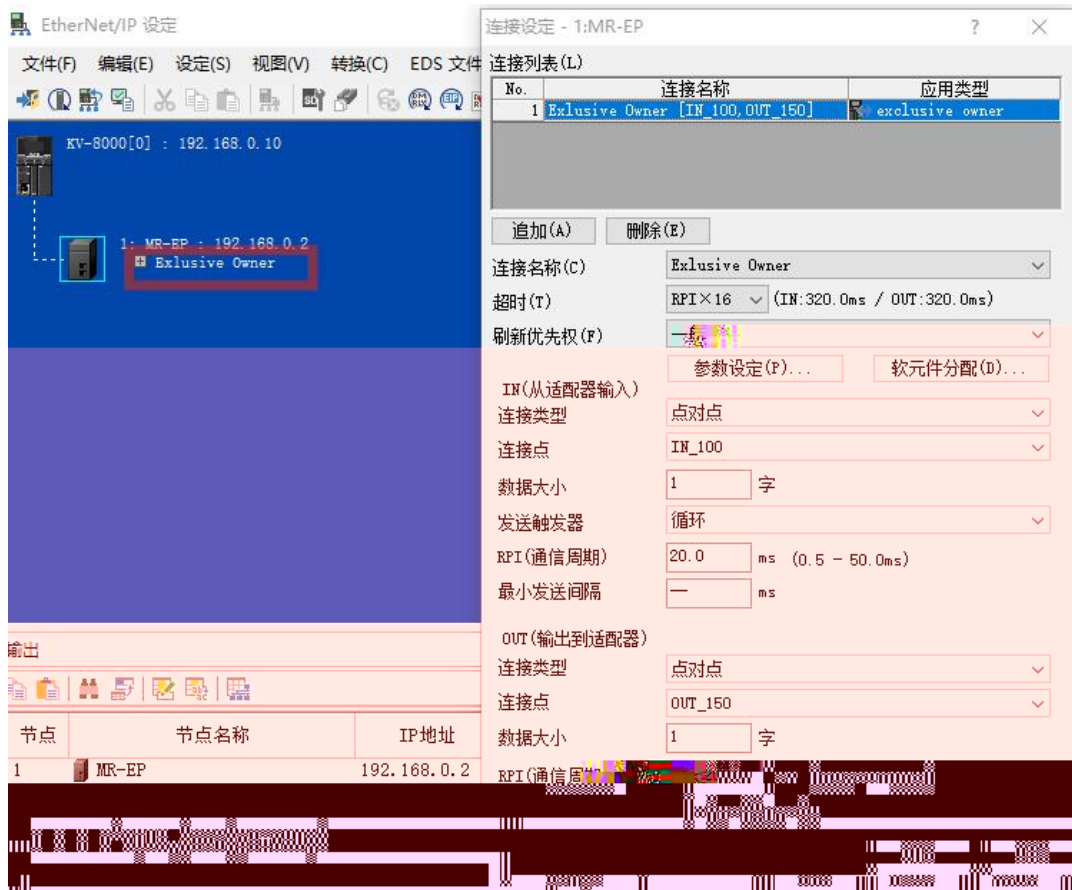
EtherNET/IP

"MR-EP"





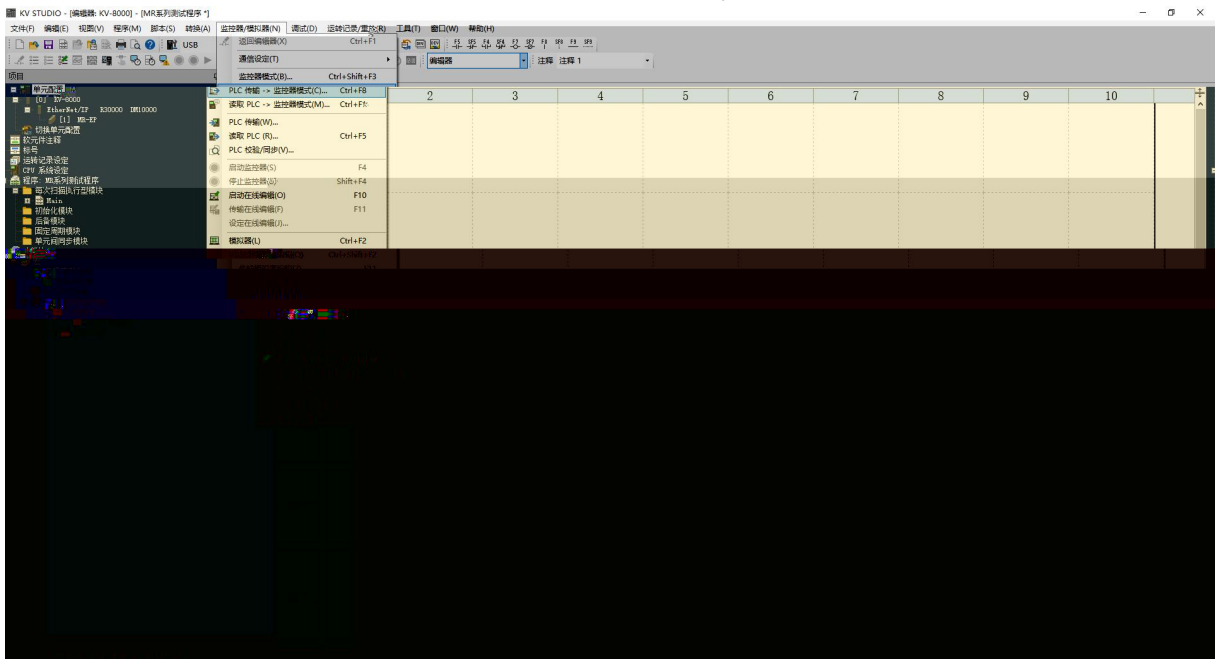
“Exclusive Owner”





PLC

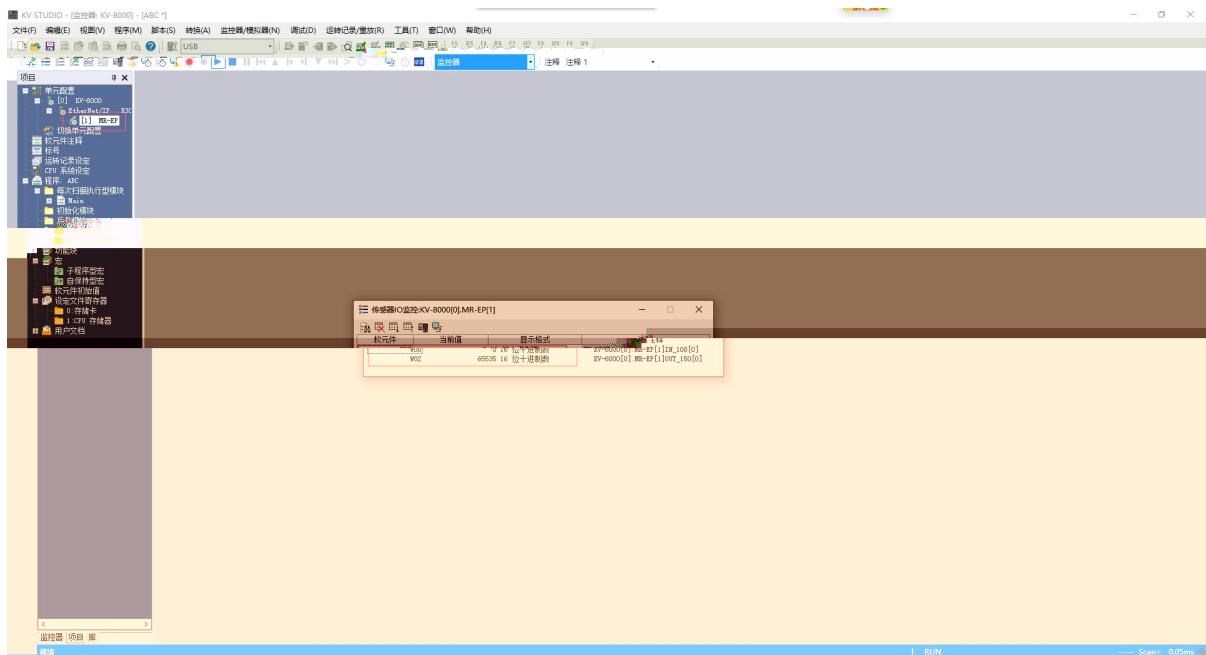
plc



5.6

PLC

" " " "



6.

1.

windows

ping

IP

ping

ping

IP

IP

2

RUN

ERR

IP

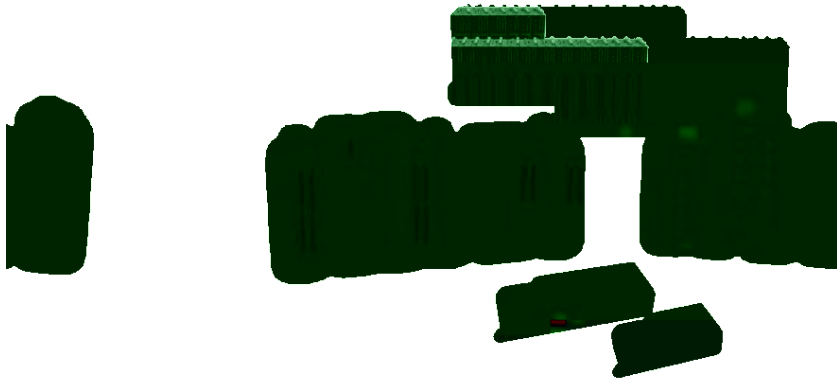
IP

IP



技科自研  
**LATCOS**

0510-85888030



[www.latcos.cn](http://www.latcos.cn)

3

0510-85888030

7

701