

透科自动化

MR

KV 7500

ethernetip)

Ethernet/IP MR

KV7500



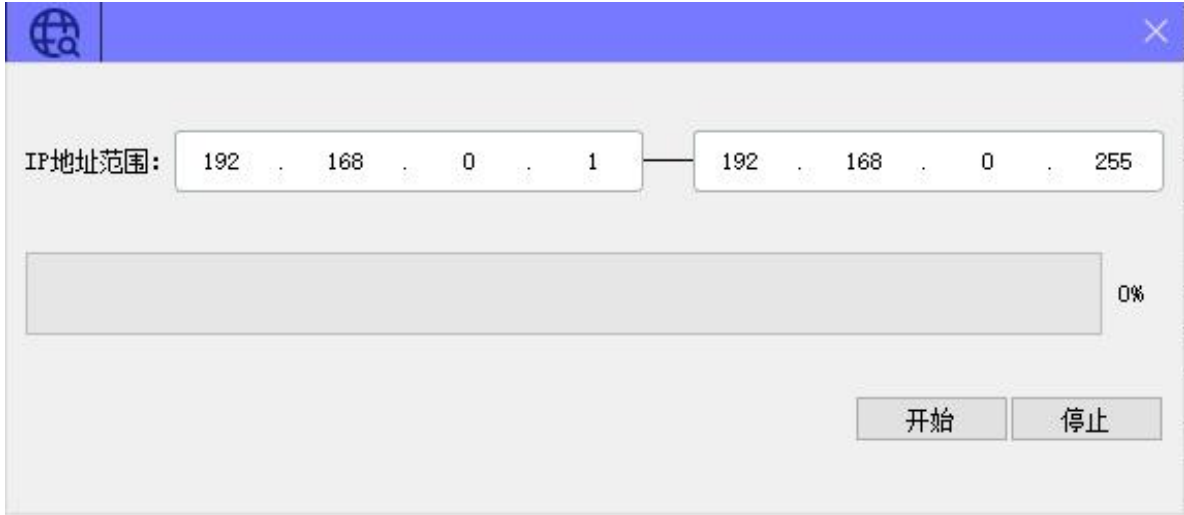
2023-3-23

2023 03 23

2023 03 23



4.2.2

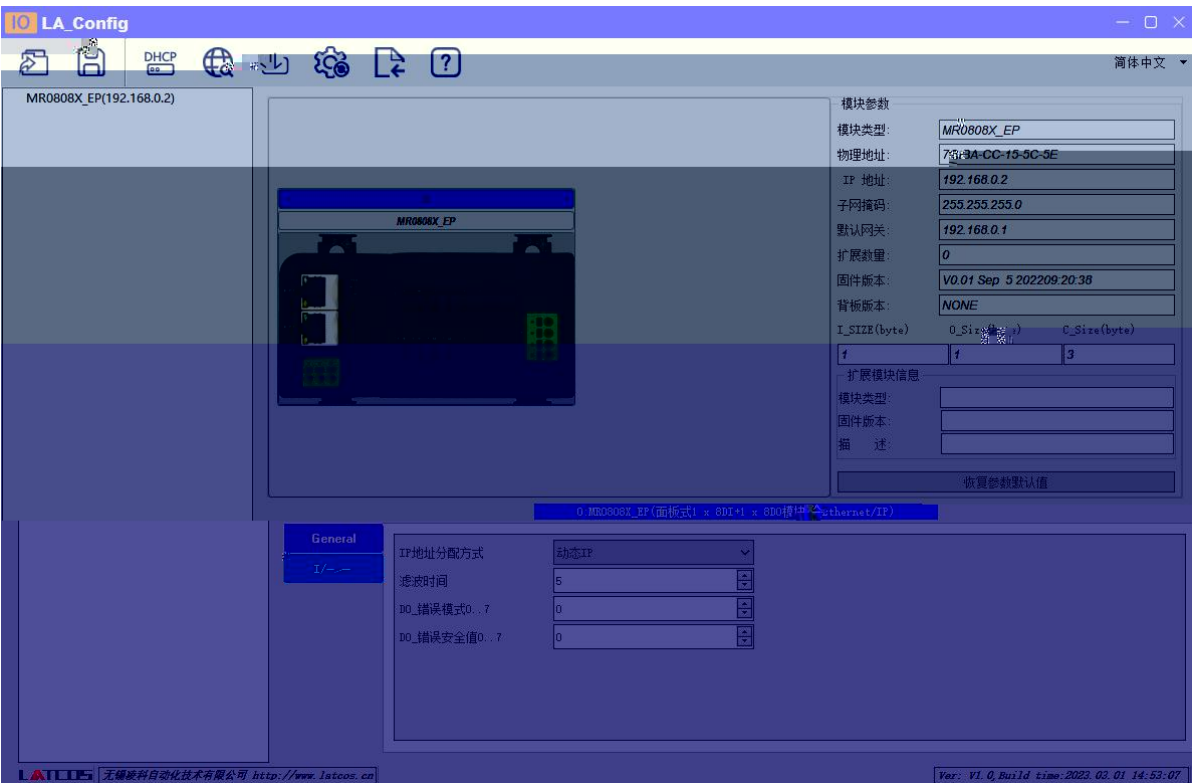


IP

IP

" "

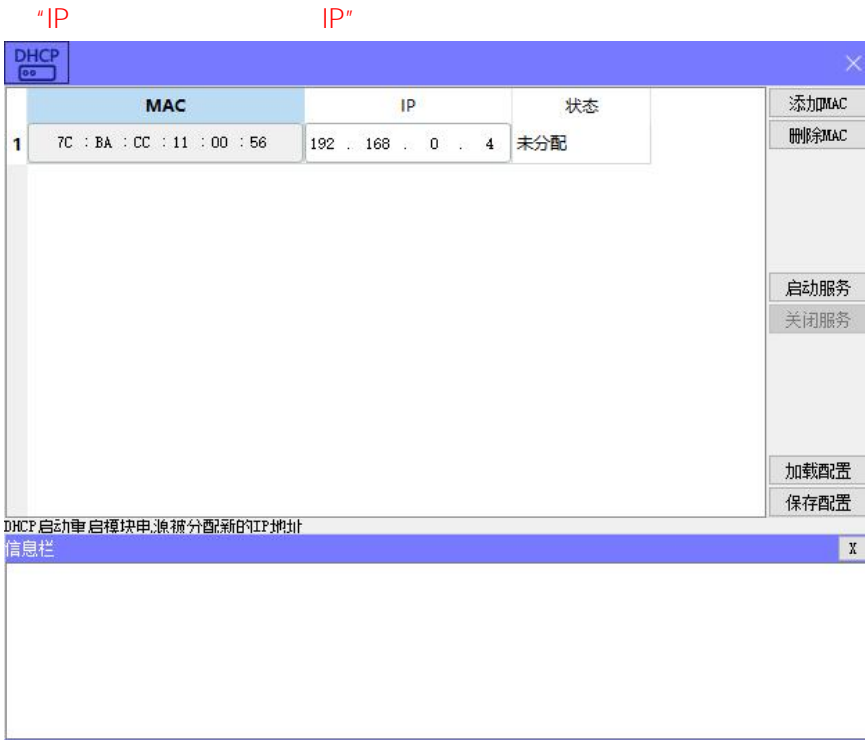
IP



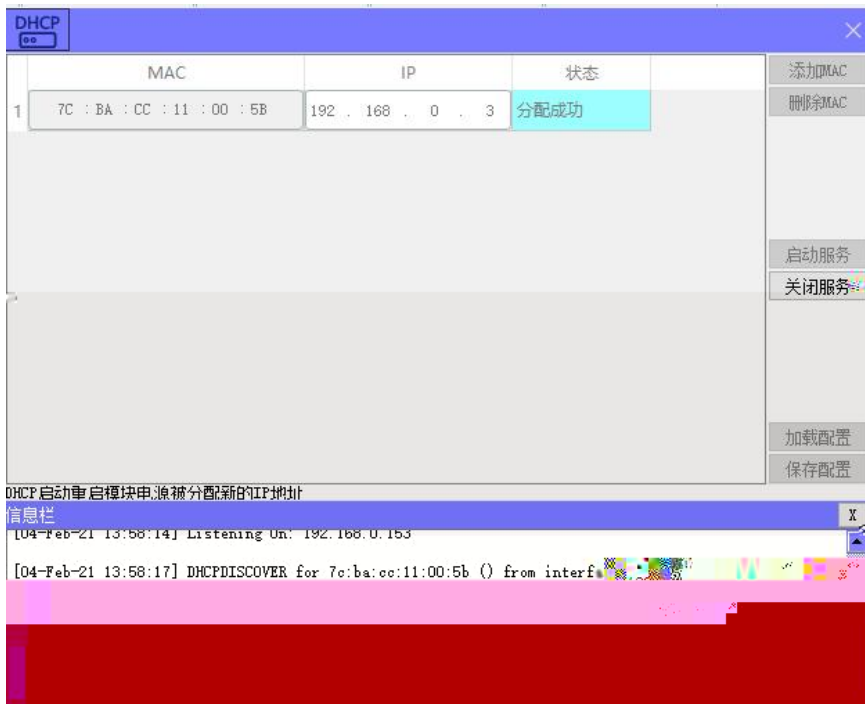
4.2.3

IP

1



MAC DHCPService " MAC" " MAC"
 IP IP " "



" "



mac	IP地址	子网掩码	默认网关	模块名称	状态
-----	------	------	------	------	----

扫描时间 5 :S

全局扫描 修改IP 恢复出厂设置 重启模块

mac	IP地址	子网掩码	默认网关	模块名称	状态
-----	------	------	------	------	----

IP P a^M n

5.

MR0808X-EP

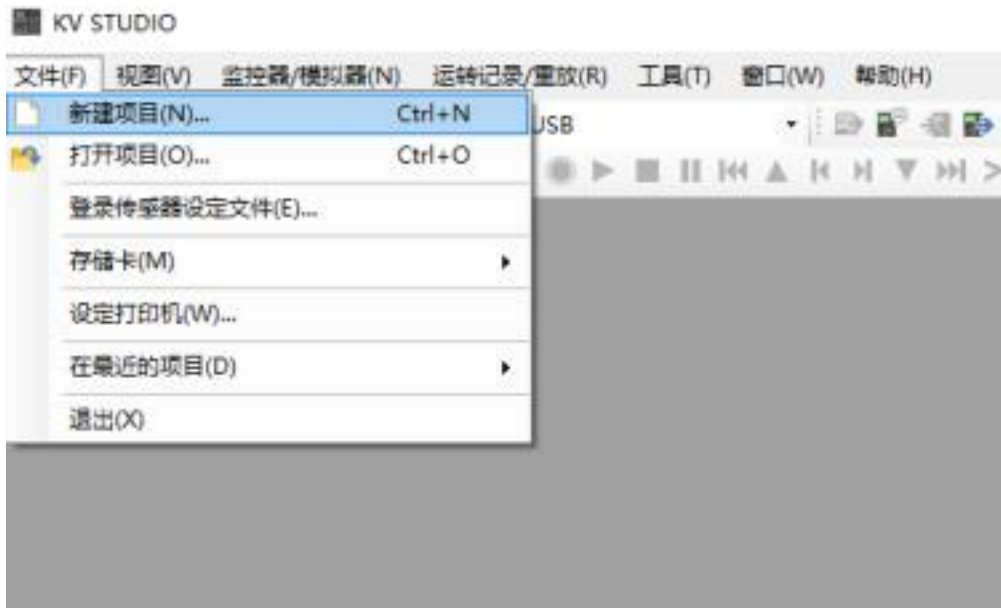
PLC (KV 7500)

KV STUDIO

5.1

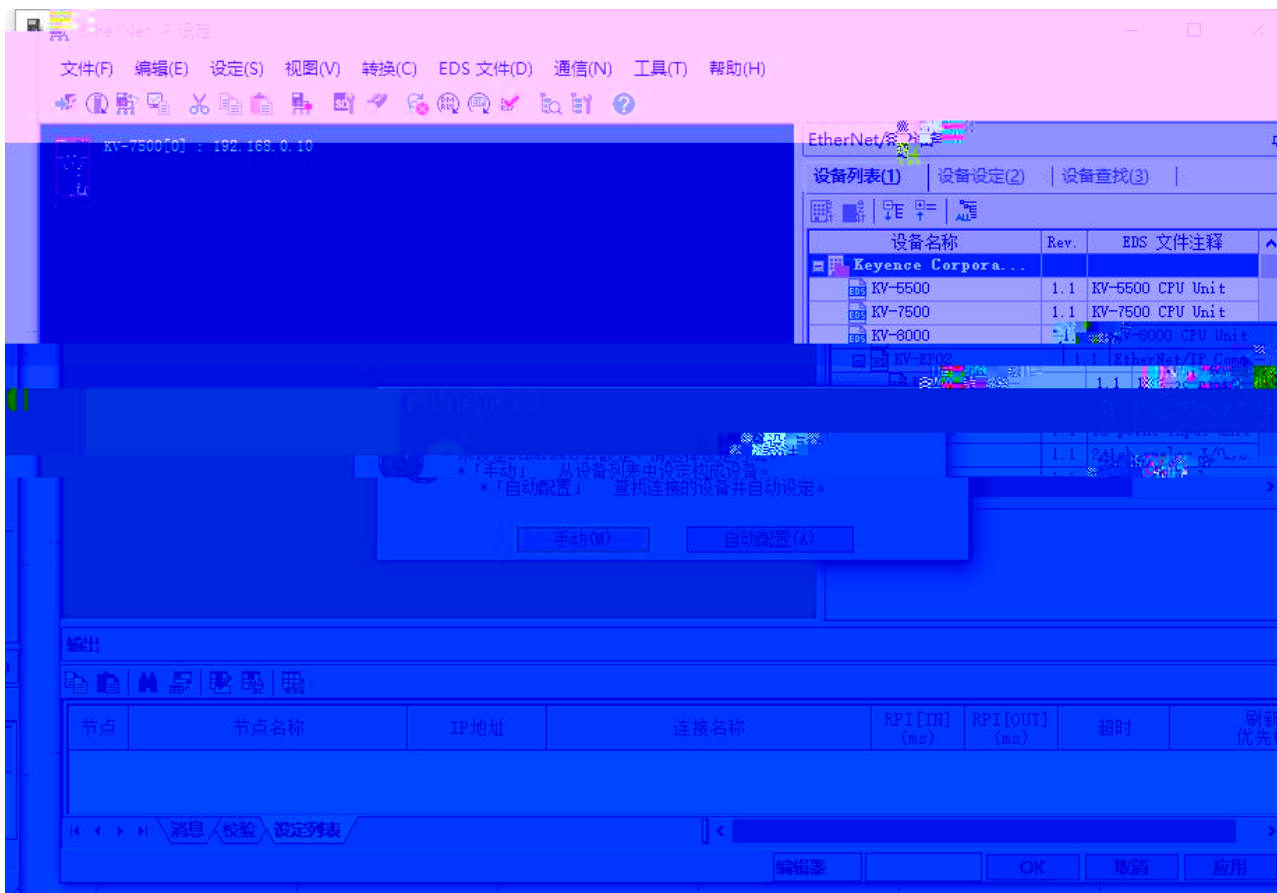
5.2

KV STUDIO



PLC





5.4 EDS

“EtherNet/IP” “EDS” p

EDS

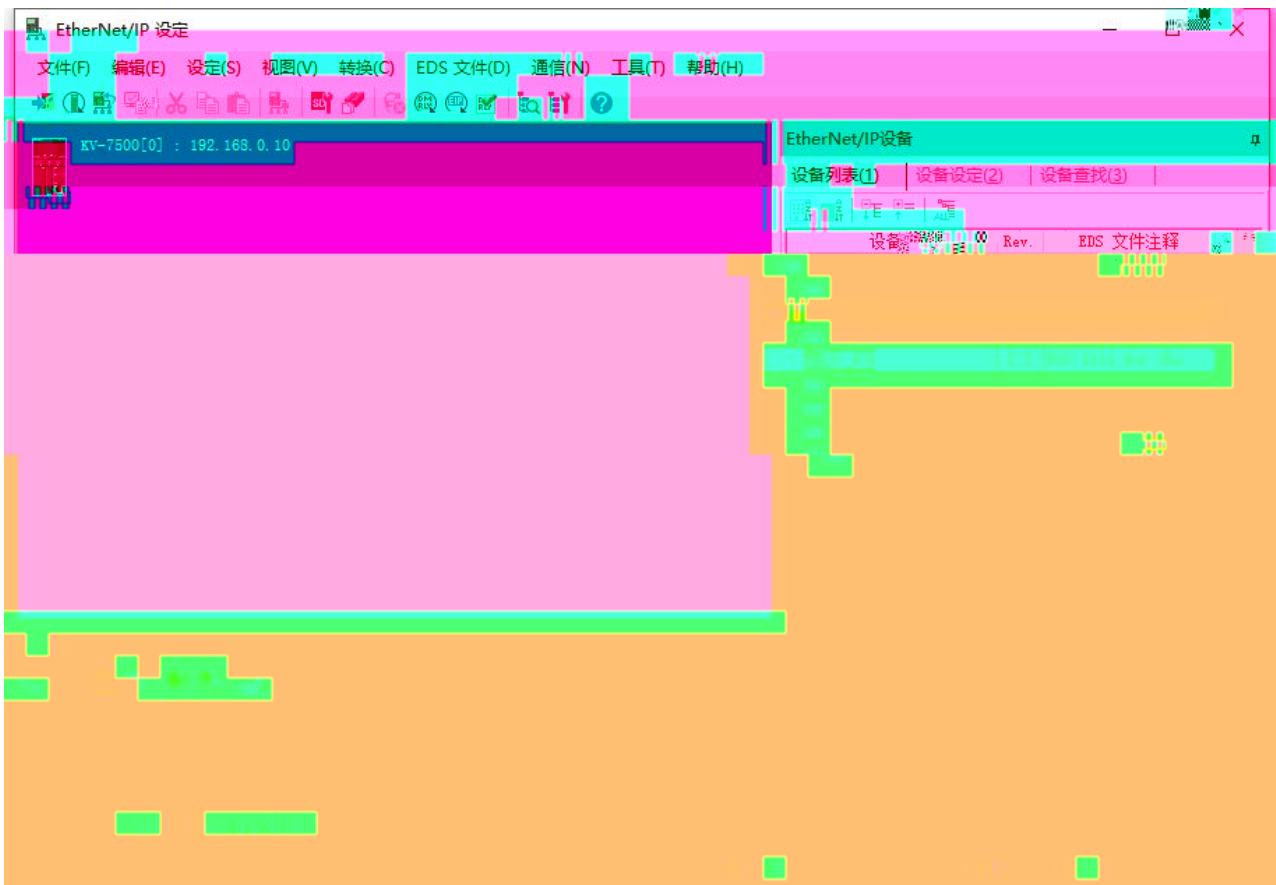
EDS

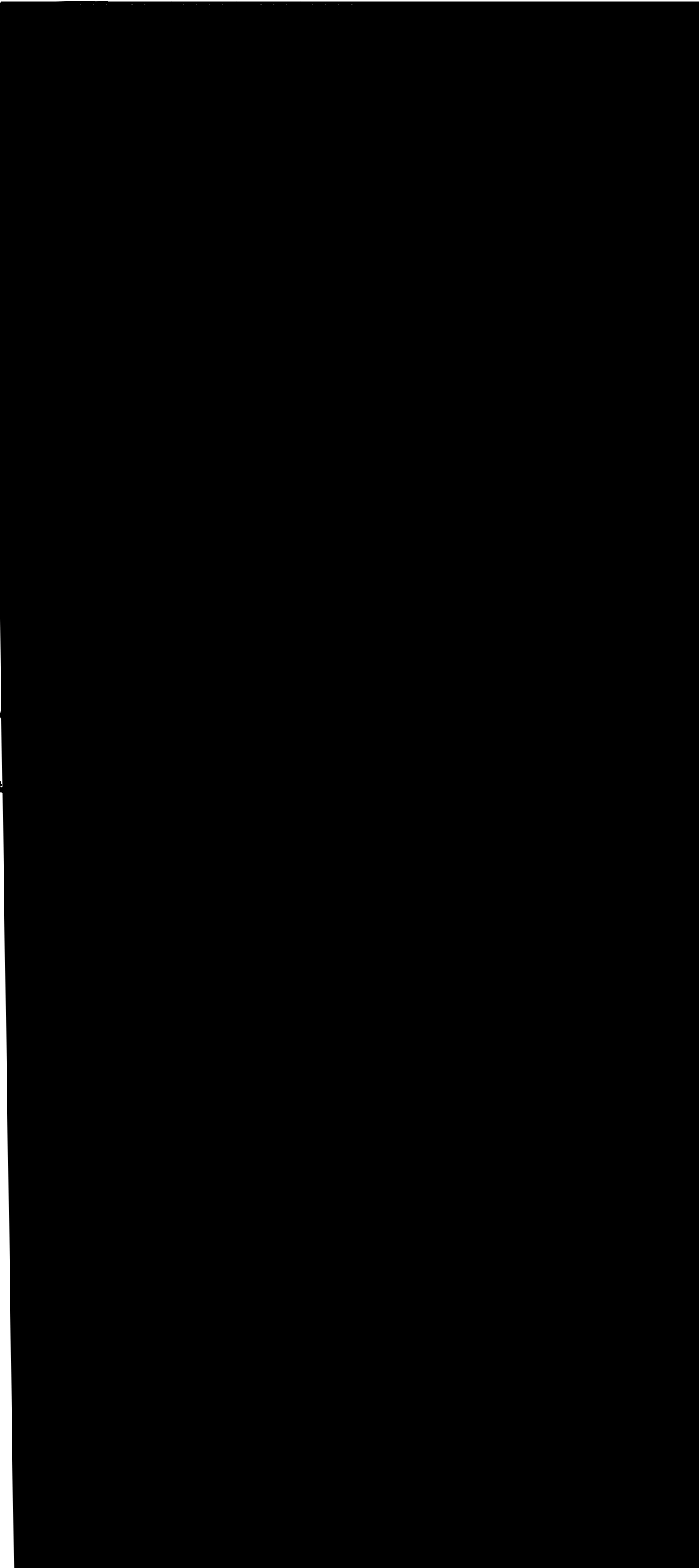
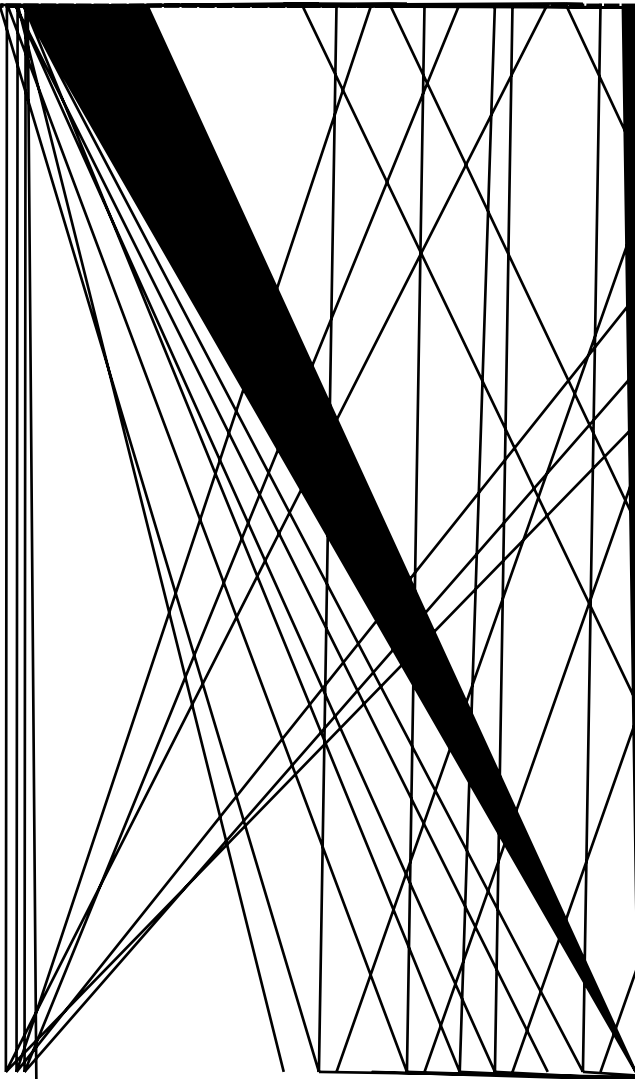


5.5

EtherNET/IP

“MR-EP”







a, Exclusive Owner MR0808x-EP MR1616x-EP MR0016x-EP M
 R0032x-EP Input Only MR1600x-EP MR3200x-EP

b,
 c, RPI 5-30

Input Data Output Data 1 = 8

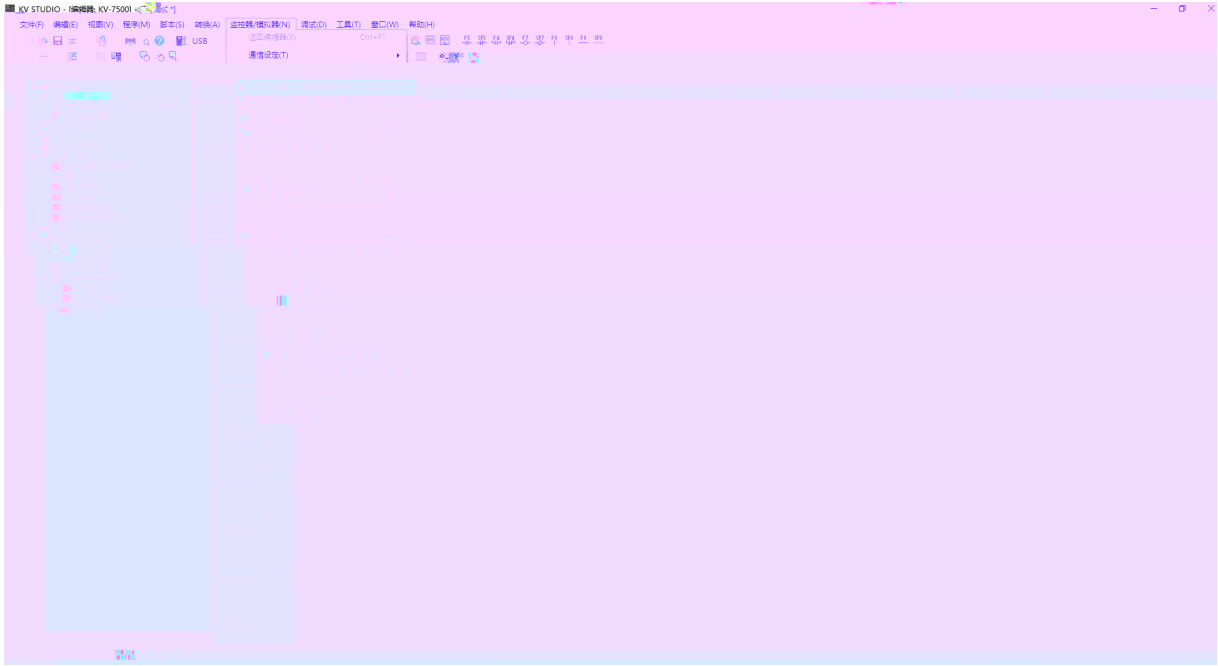
	MR0808X-EP	MR1616X-EP	MR1600X-EP	MR3200X-EP	MR0016X-EP	MR0032X-EP
Input Data	1	2	2	4	0	0
Output Data	1	2	-	-	2	4
	Exclusive owner		Input Only		Exclusive owner	

LAECONFIG

I_SIZE (byte)	O_Size (byte)	C_Size (byte)

PLC

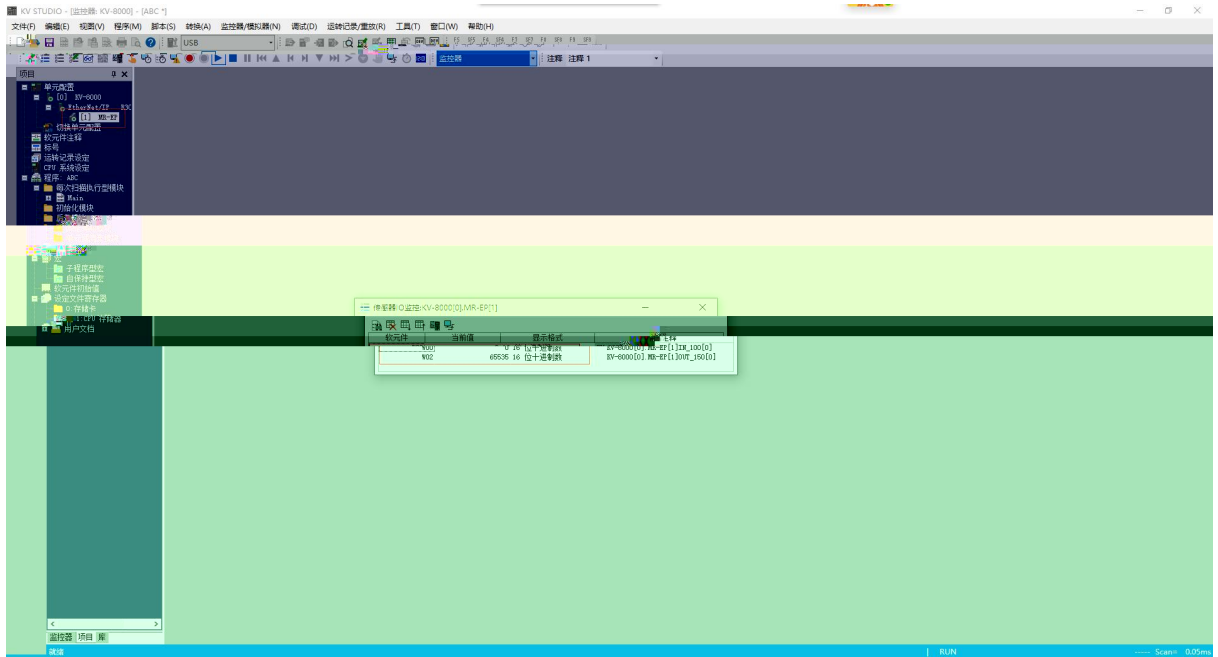
plc



5.6

PLC

“ ” “ ”



6.

1.

windows

ping

IP

ping

ping

IP

IP

2

RUN

ERR

IP

IP

IP

