

2023-3-23

2023 03 23

20223 03 23

1.

KV STUDIO Ver.10G

2.

KV8000 Ethernet/IP IO KV STUDIO Ver.10G
IO .eds IO

3.

- KV STUDIO Ver.10G
- IO SRX_EP20221128.eds

4.

4.1

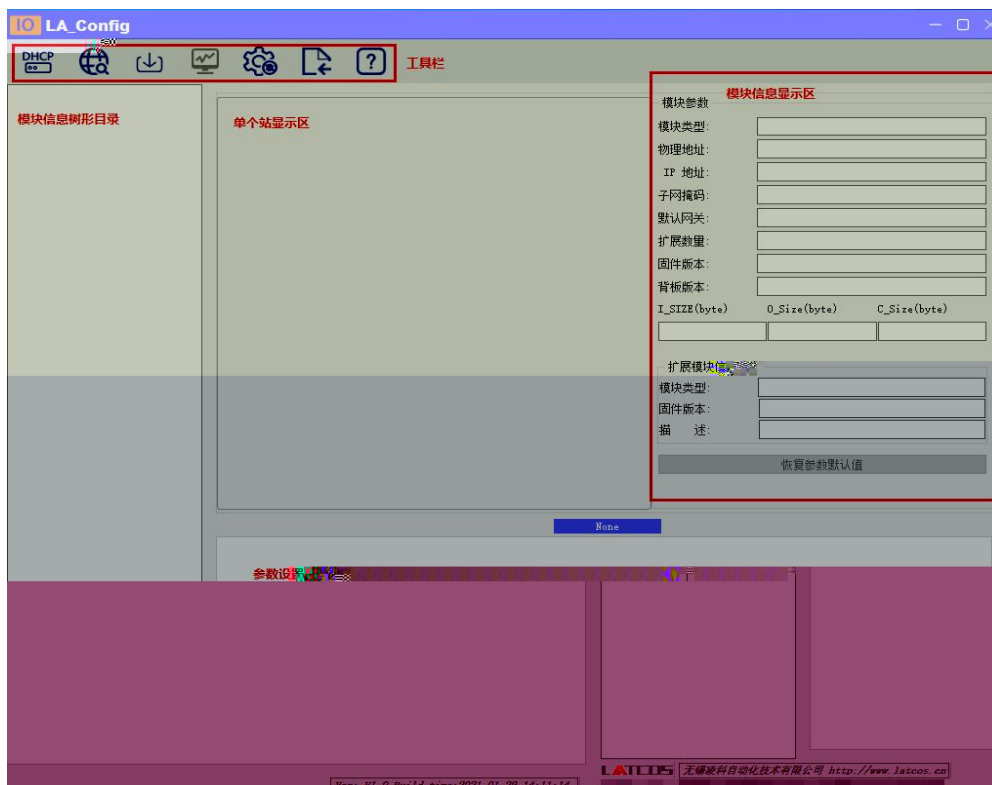
- 1. KV8000 IO
- 2. PLC Ethernet IO

4.2

IP

4.2.1

LAEConfig IP IP 192.168.0.x



4.2.3


IP

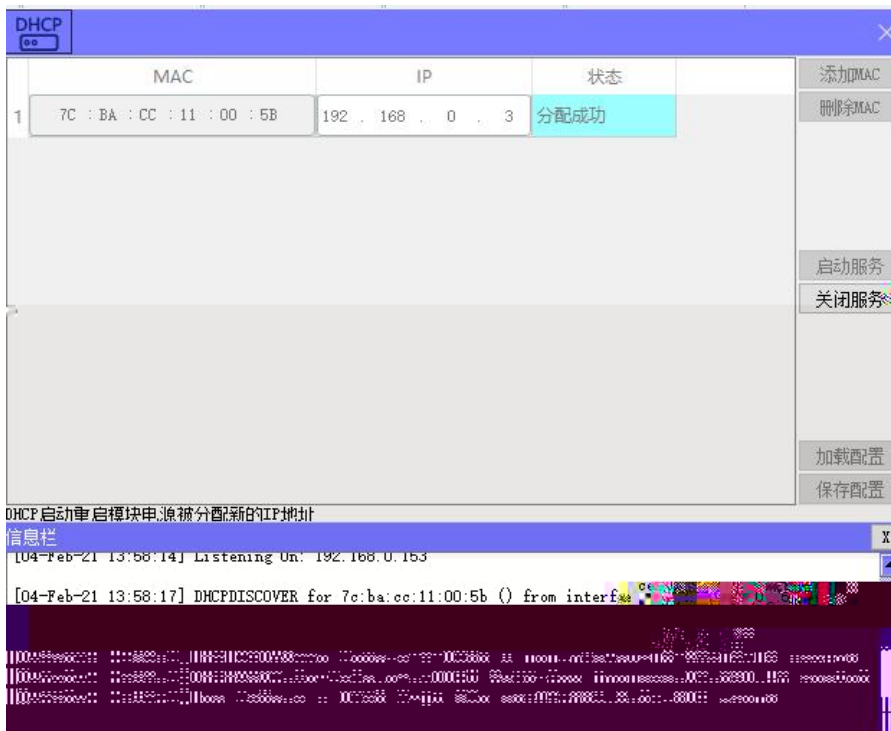
1

"IP"

IP"




 DHCPService " MAC" " MAC"
 MAC IP " "
 IP





mac	IP地址	子网掩码	默认网关	模块名称	状态
-----	------	------	------	------	----

扫描时间 5 :S

全局扫描 修改IP 恢复出厂设置 重启模块

mac	IP地址	子网掩码	默认网关	模块名称	状态
7C-8-0	192.168.0.3	255.255.255.0	192.168.0.1	192.168.0.3	IP

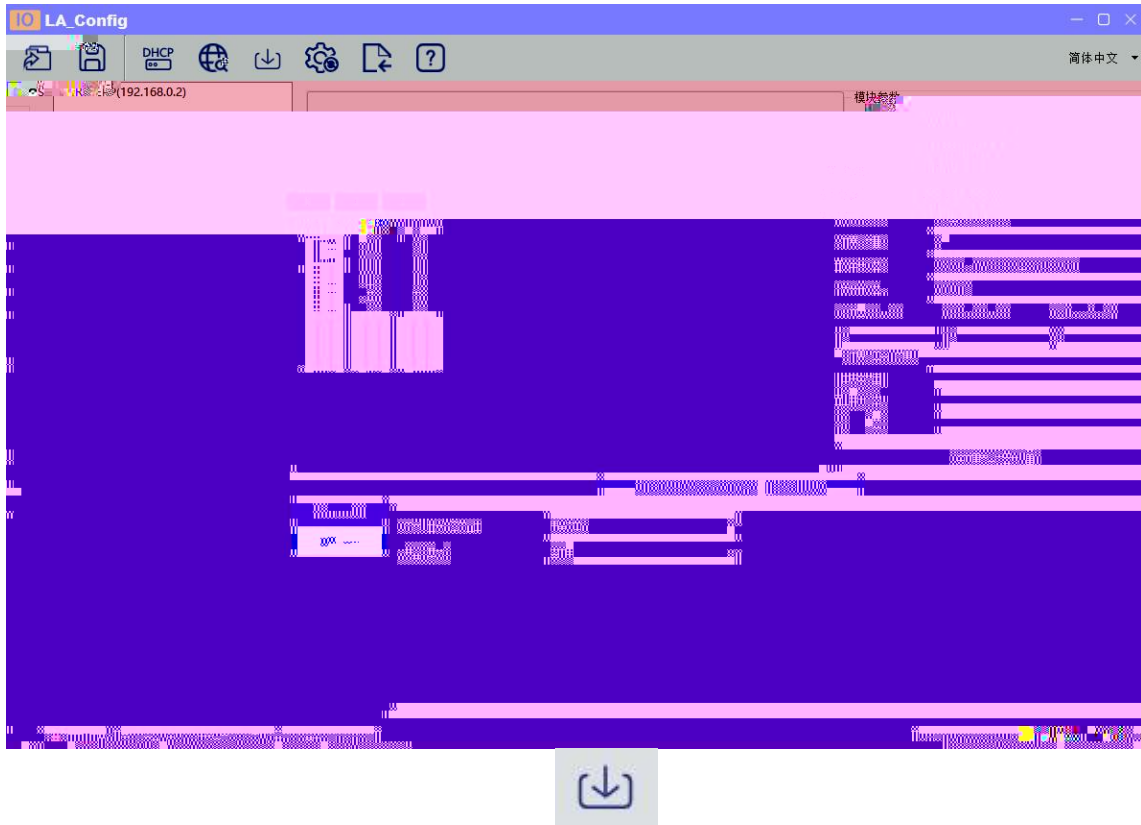
扫描时间 5 :S

全局扫描 修改IP 恢复出厂设置 重启模块

扫描进行中: 100%

IP " IP" IP

4.2.4



4.2.5 /

/

1

2) DO_ 0..7 DQ0.x bit DQ0.x

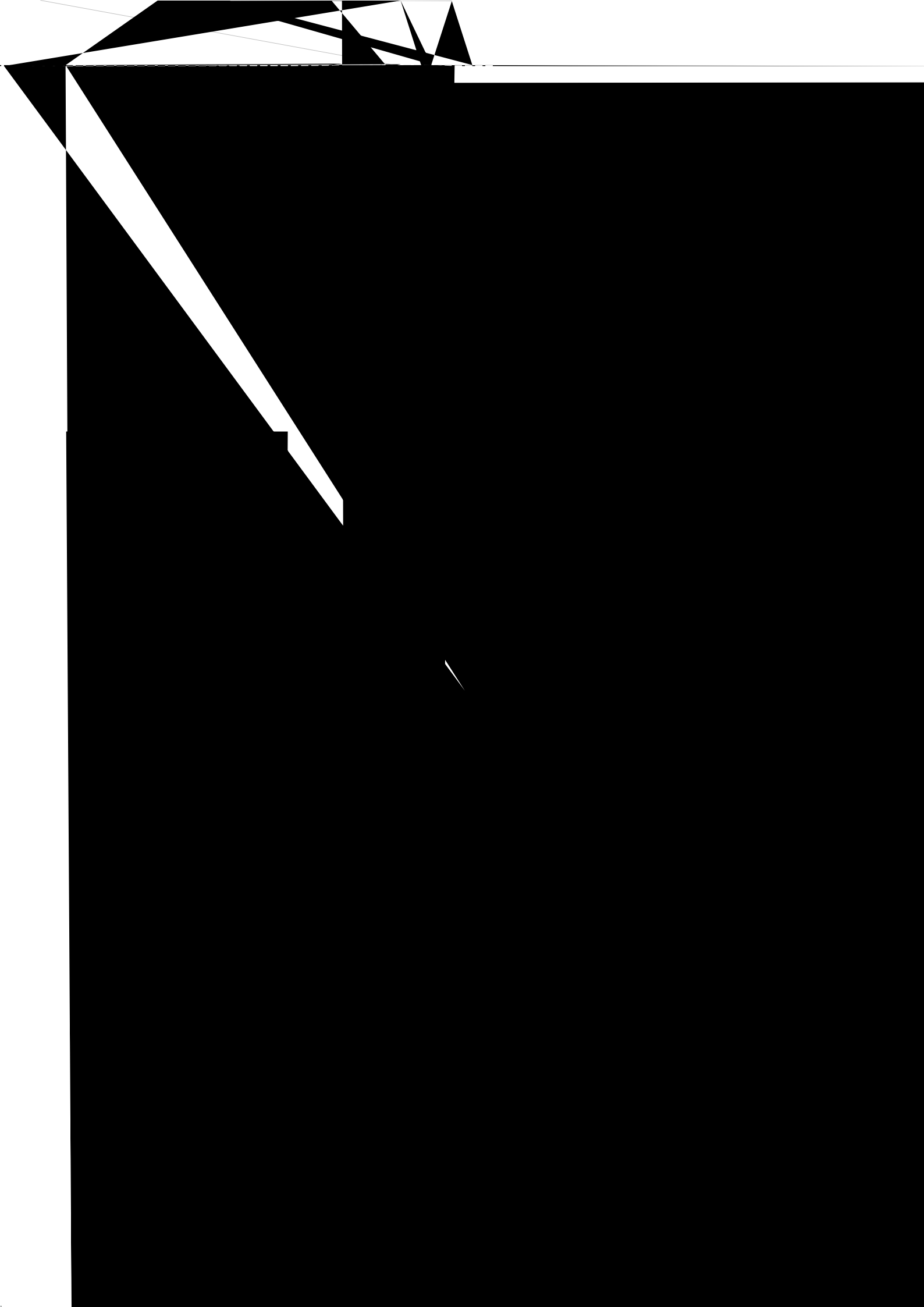
Bit0 DQ-0.0 "Error Mode" bit "1"

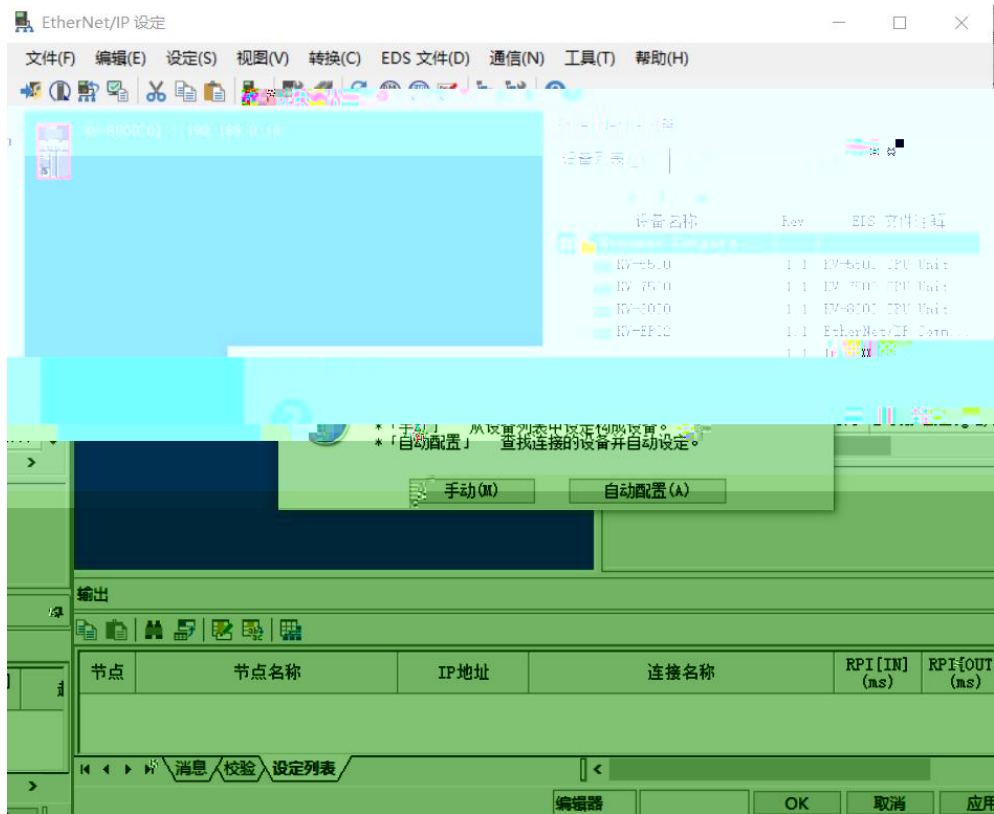
"Error Value[7..0]" bit DQ0.x

3) DO_ 0..7 "Error Mode[7..0]" bit

DQ

4) "  "





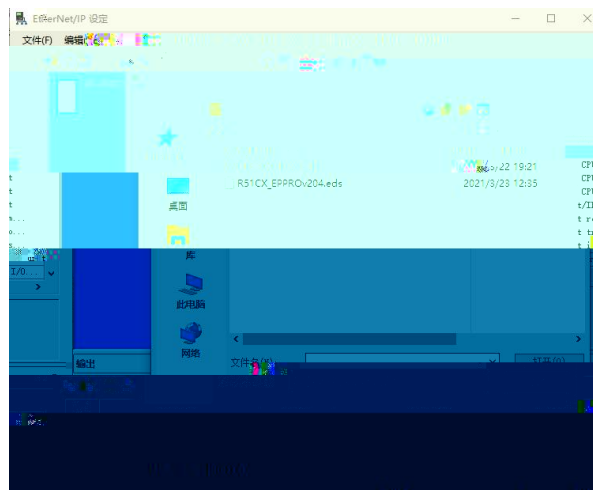
5.4 EDS

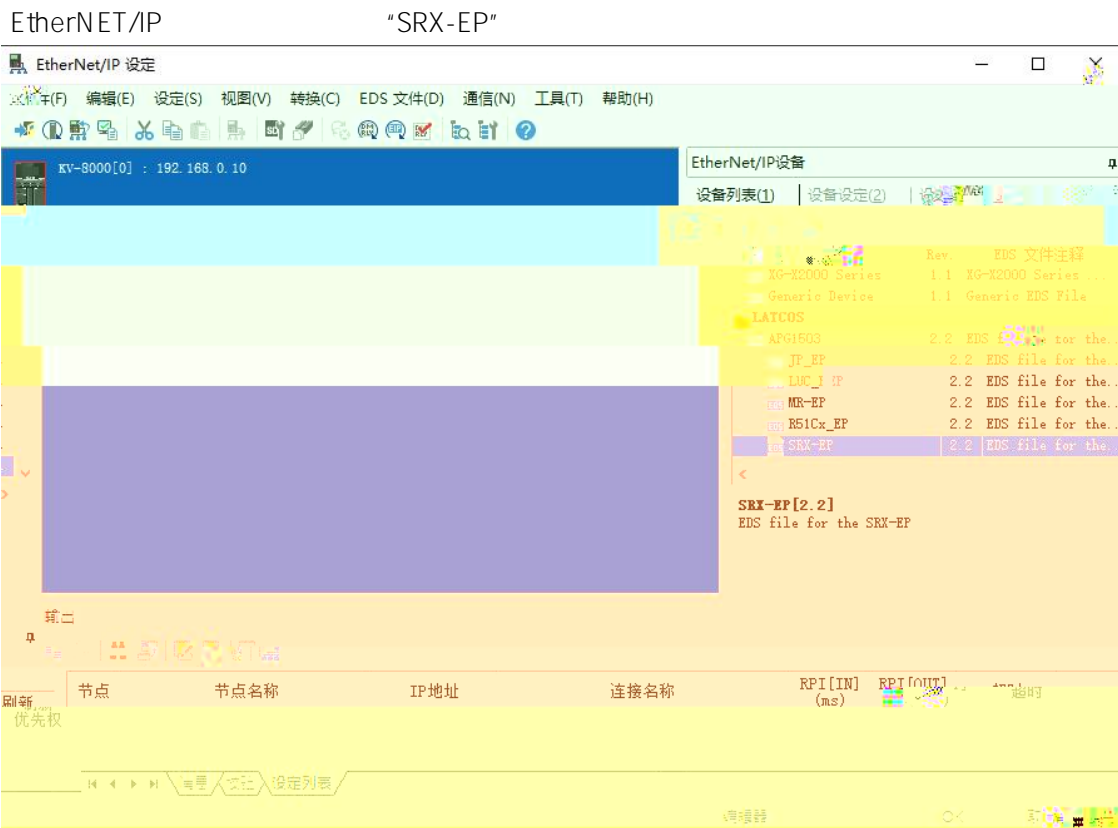
“EtherNet/IP ” “EDS ” “ ” “ ”



EDS

EDS





IP

"Exclusive Owner"

