

SRX-PN

S7-1200

PROFINET SRX-PN S7-1200



2023-01-18

2023 1 18

2023 1 18

1.

S7-1200 PLC PROFINET IO -

2.

S7-1200PLC PROFINET IO IO

3.

- TIA Portal V14
- IO GSDML-V2.31-LATCOS-SRX_PN-20220909

4.

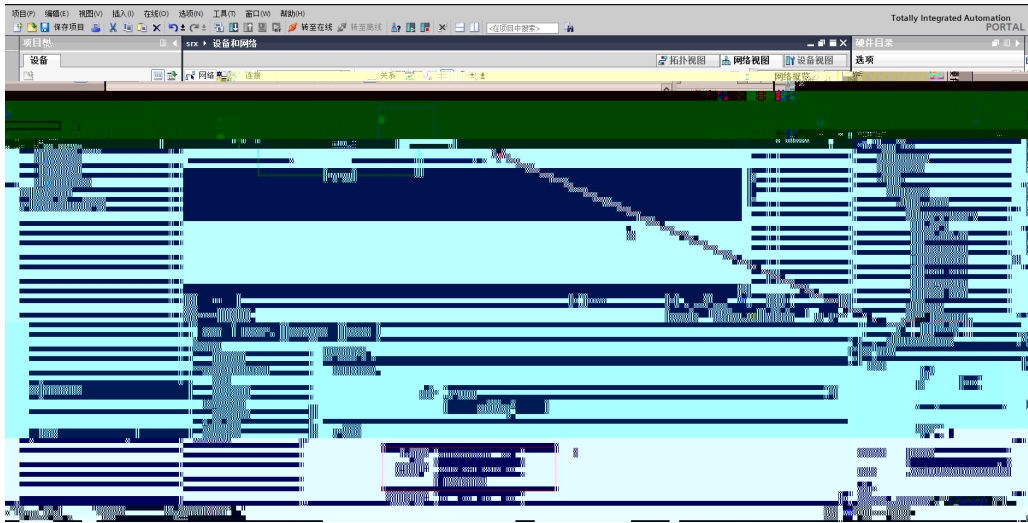
4.1

1. S7-1200PLC IO
2. PLC IO X1 IO X2



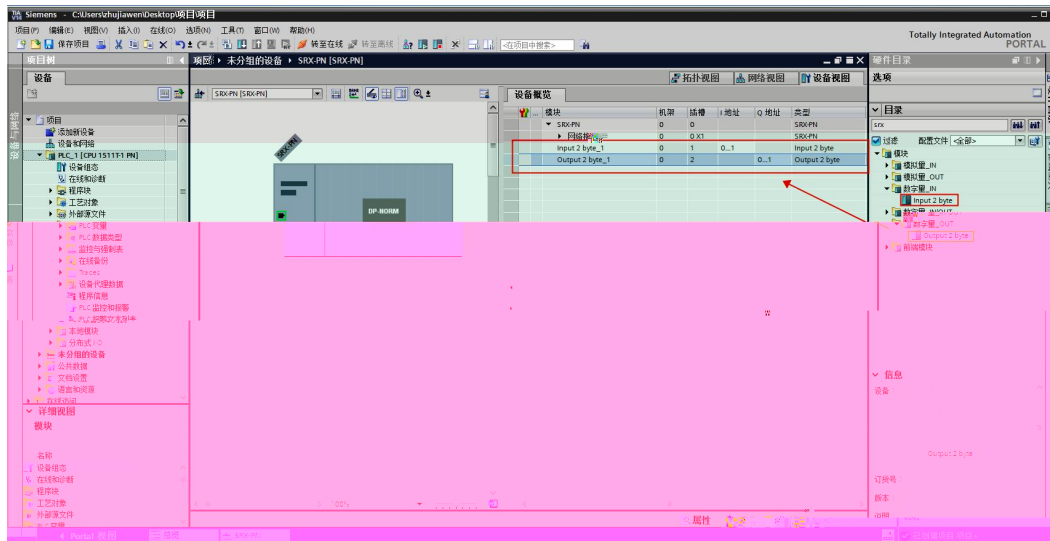
4.2

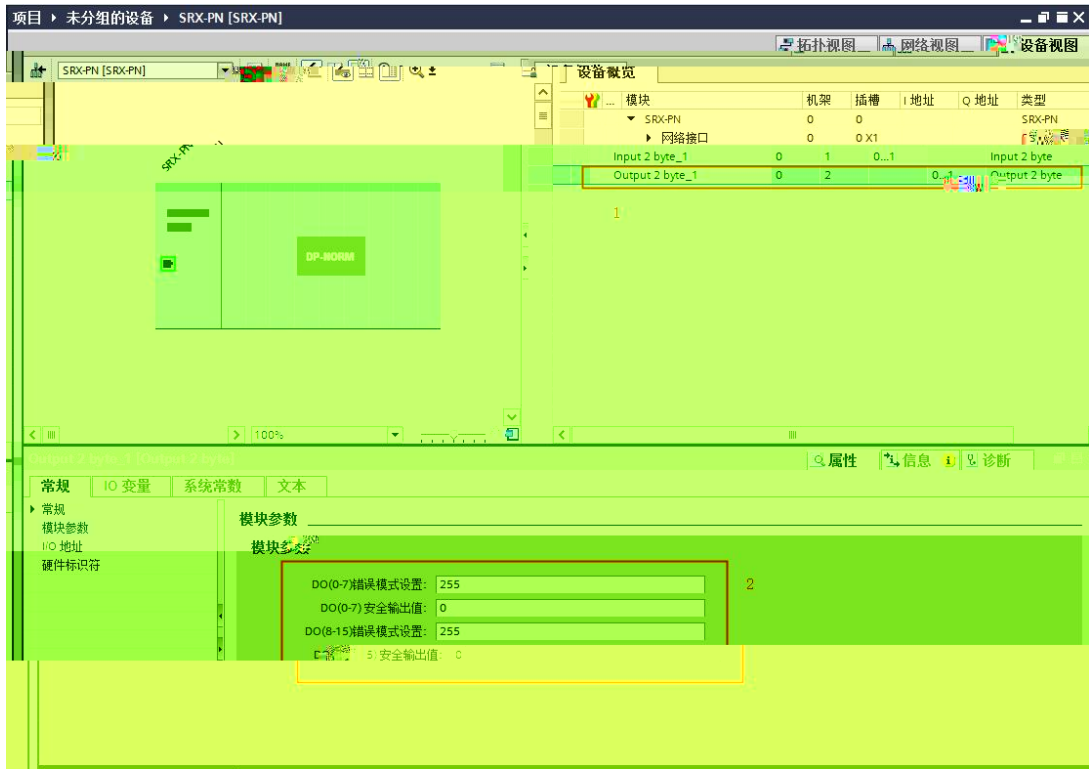
1. TIA Portal " "



SRX-PN

SRX-D 1600P-PN	Slot1	Input 2 byte		
SRX-D 3200P-PN	Slot1	Input 2 byte	Slot2	Input 2 byte
SRX-D1616P-PN	Slot1	Input 2 byte	Slot2	Output 2 byte
SRX-D0016P-PN	Slot1	Output 2 byte		
SRX-D0032P-PN	Slot1	Output 2 byte	Slot2	Output 2 byte
SRX-A0600-PN	Slot1	6CH AI		



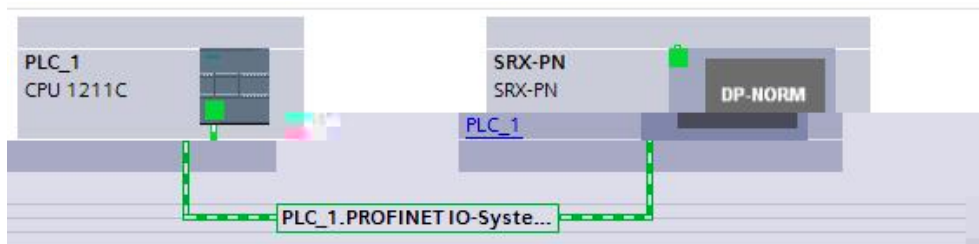
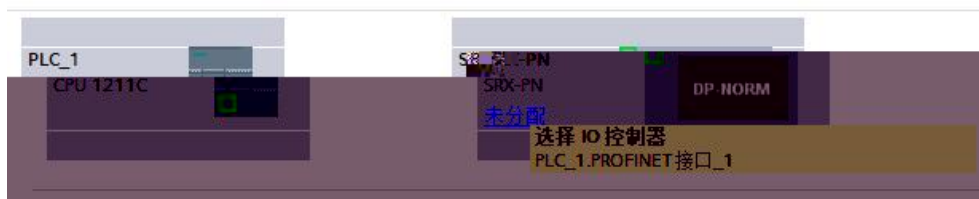


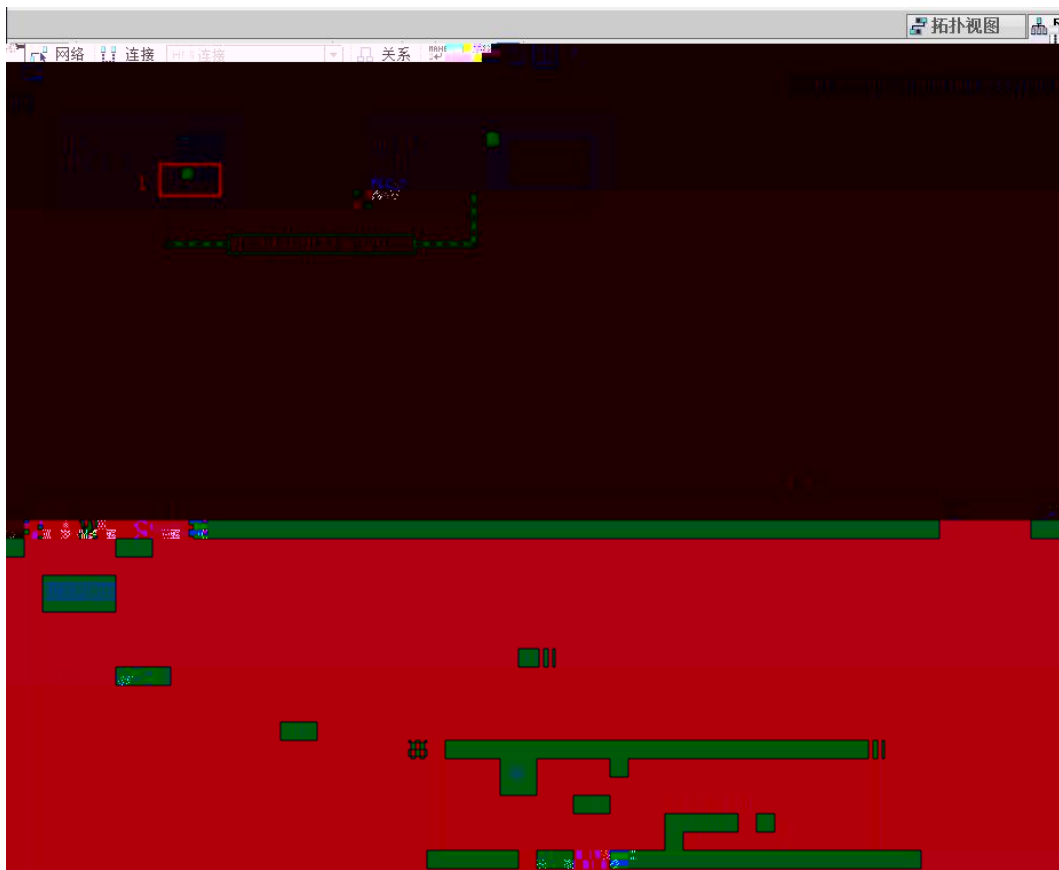
7.

PLC_1.PEOPFINET _1

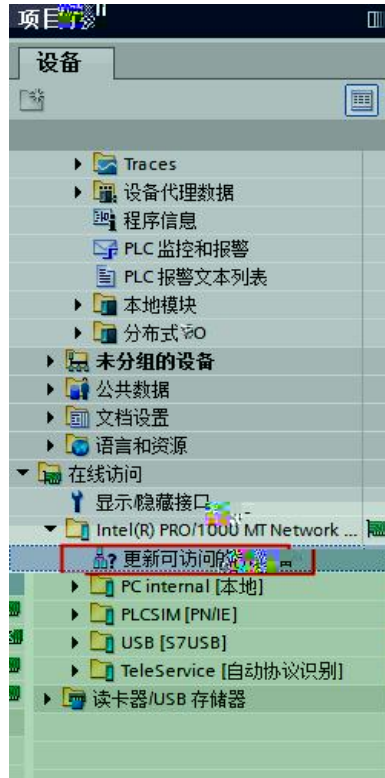
SRX-PN

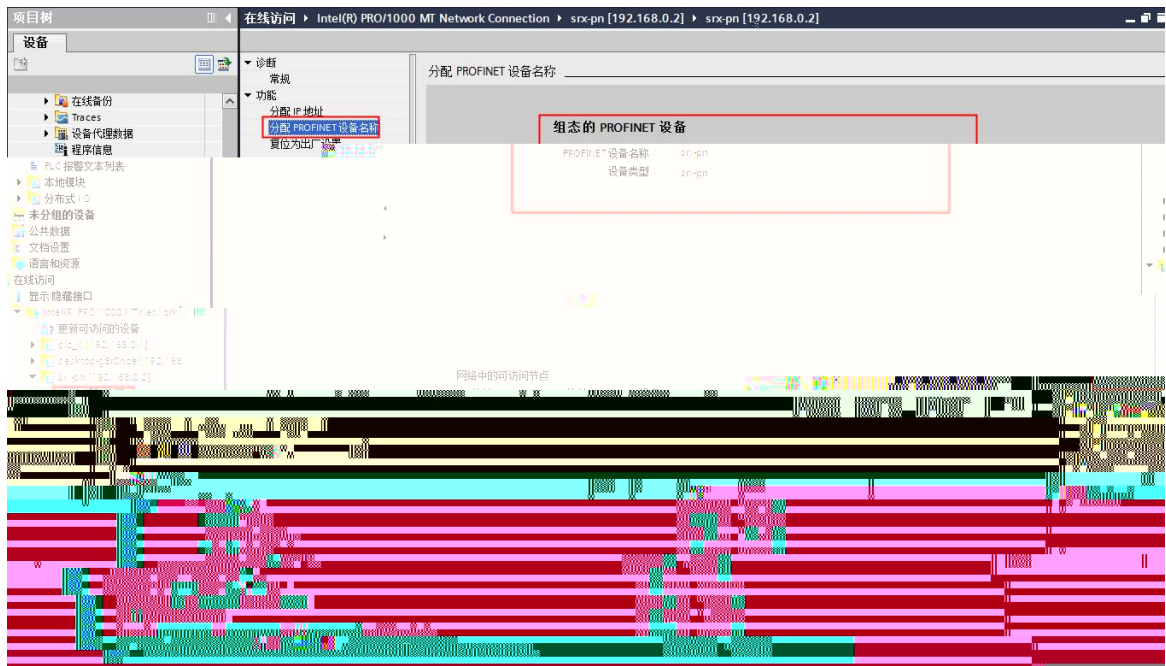
PROFINET





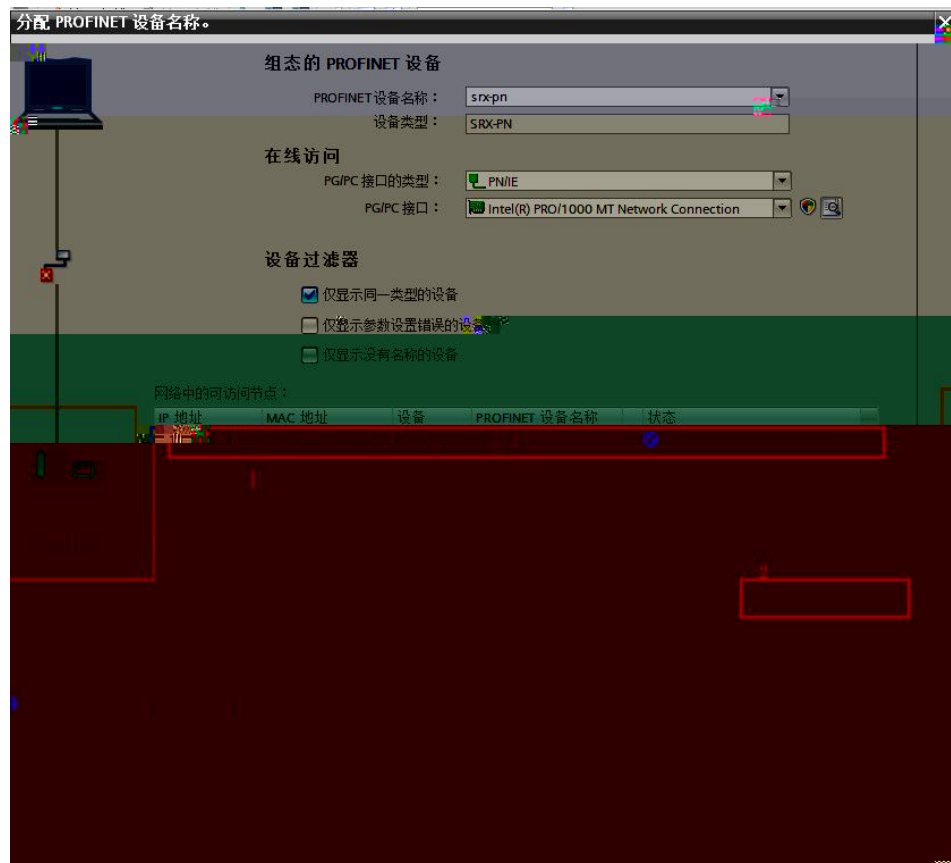
"







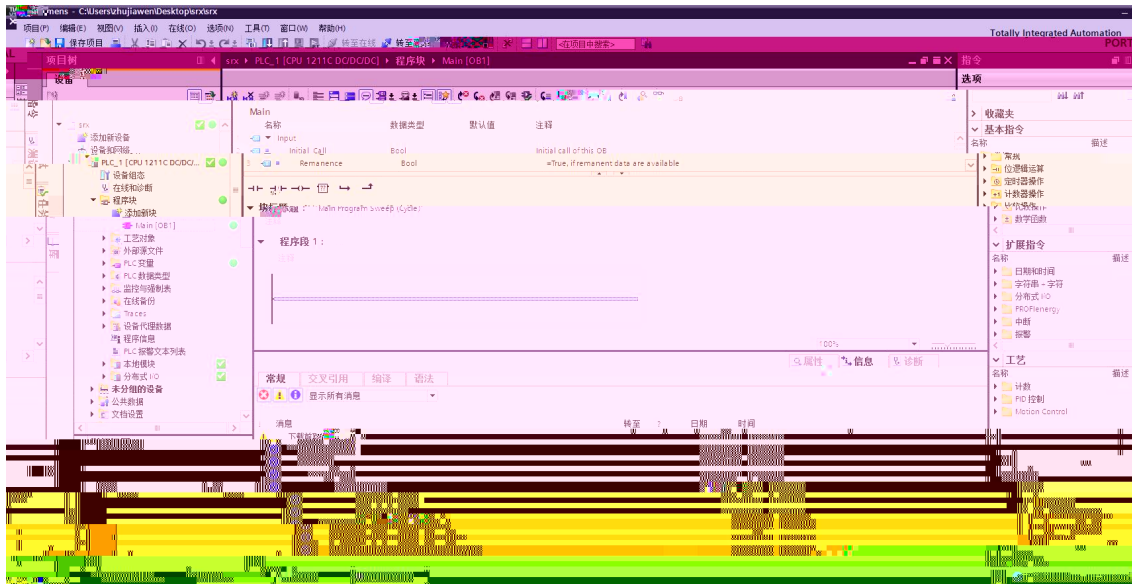
MAC



PLC

IP

4.4





技科自研
LATCOS

AT-15107

0510-85888030



www.latcos.cn

0510-85888030

3

7

701