
透科自动化























DHCP **扫描** **下载** **监控** **参数** **描述文件** **帮助**
服务 **模块** **参数** **导入**

IP地址范围: . . . — . . .




IO LA Config — □ ×









简体中文 ▾

JP0808X_EP(192.168.0.2)

0

JP0808X_EP



模块参数

模块类型:

物理地址:

IP 地址:

子网掩码:

默认网关:

扩展数量:

固件版本:

背板版本:

I_SIZE(byte)	O_SIZE(byte)	C_SIZE(byte)
1	1	3


扩展模块信息

模块类型:

固件版本:

描述:

s . 20'



DHCP

	MAC	IP	状态
1	7C : BA : CC : 15 : 82 : 3E	192 . 168 . 0 . 1	未分配

添加MAC
删除MAC

启动服务
关闭服务

加载配置
保存配置

DHCP 启动单启模块中,源被分配新的IP地址

信息栏



DHCP

	MAC	IP	状态
1	7C : BA : CC : 15 : 82 : 3E	192 . 168 . 0 . 3	分配成功

添加MAC
删除MAC

启动服务
关闭服务

加载配置
保存配置

DHCP 启动单启模块中,源被分配新的IP地址

信息栏

```

[23-Mar-23 10:50:19] warning: interface 192.168.0.19 is not Static, ignored
[23-Mar-23 10:50:19] Lease
[23-Mar-23 10:50:20] DHCPREQUEST for 7c:ba:cc:15:82:3e () from interface 192.168.0.211 received
[23-Mar-23 10:50:20] Host 7c:ba:cc:15:82:3e (Host7cbacc15823e) allotted 192.168.0.3 for 360
seconds
[23-Mar-23 10:50:22] Network changed, re-detecting Static IP
  
```



Window with a blue title bar and a close button (X). The main area is a table with the following columns: mac, IP地址, 子网掩码, 默认网关, 模块名称, 状态.

mac	IP地址	子网掩码	默认网关	模块名称	状态
-----	------	------	------	------	----

扫描时间: 5 :S

Buttons: 全局扫描, 修改IP, 恢复出厂设置, 重启模块

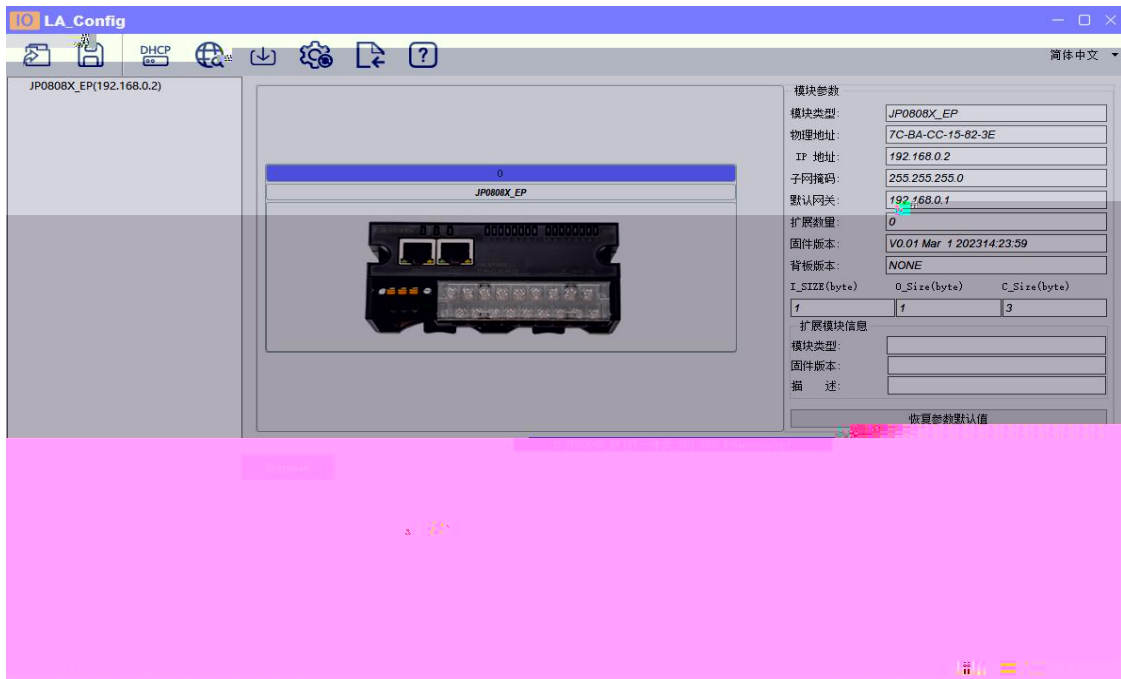
Window with a blue title bar and a close button (X). The main area is a table with the following columns: mac, IP地址, 子网掩码, 默认网关, 模块名称, 状态.

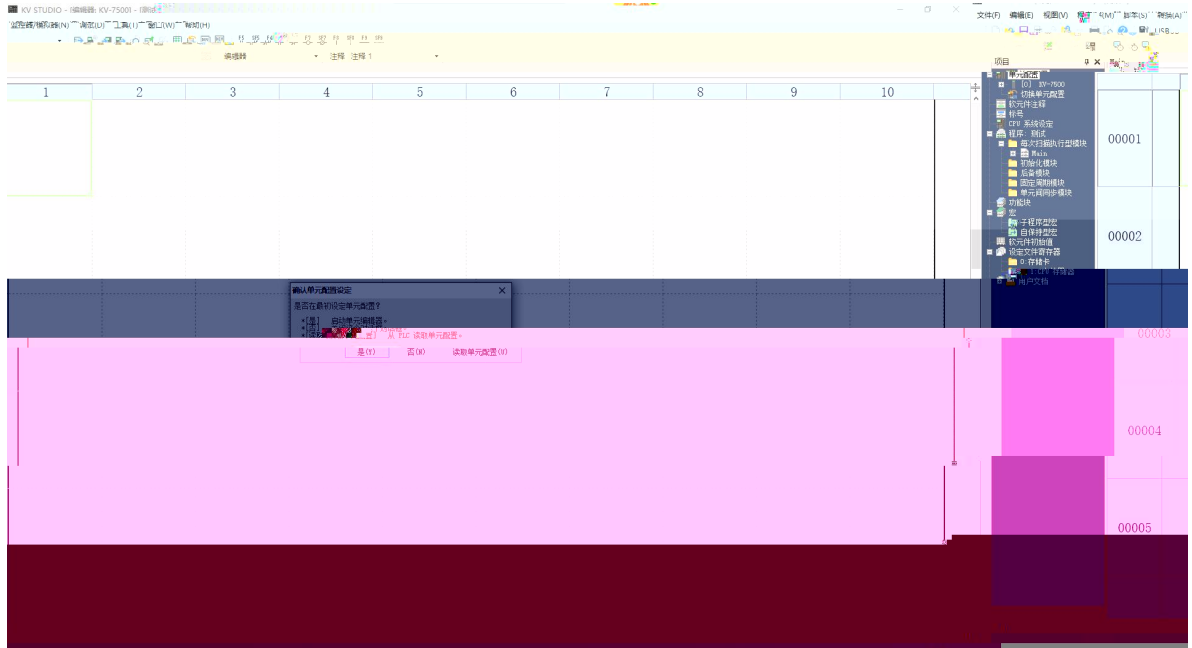
mac	IP地址	子网掩码	默认网关	模块名称	状态
1 7C-BA-CC-15-82-3E	192 . 168 . 0 . 3	255 . 255 . 255 . 0	192 . 168 . 0 . 1	JP0808X_EP	未操作

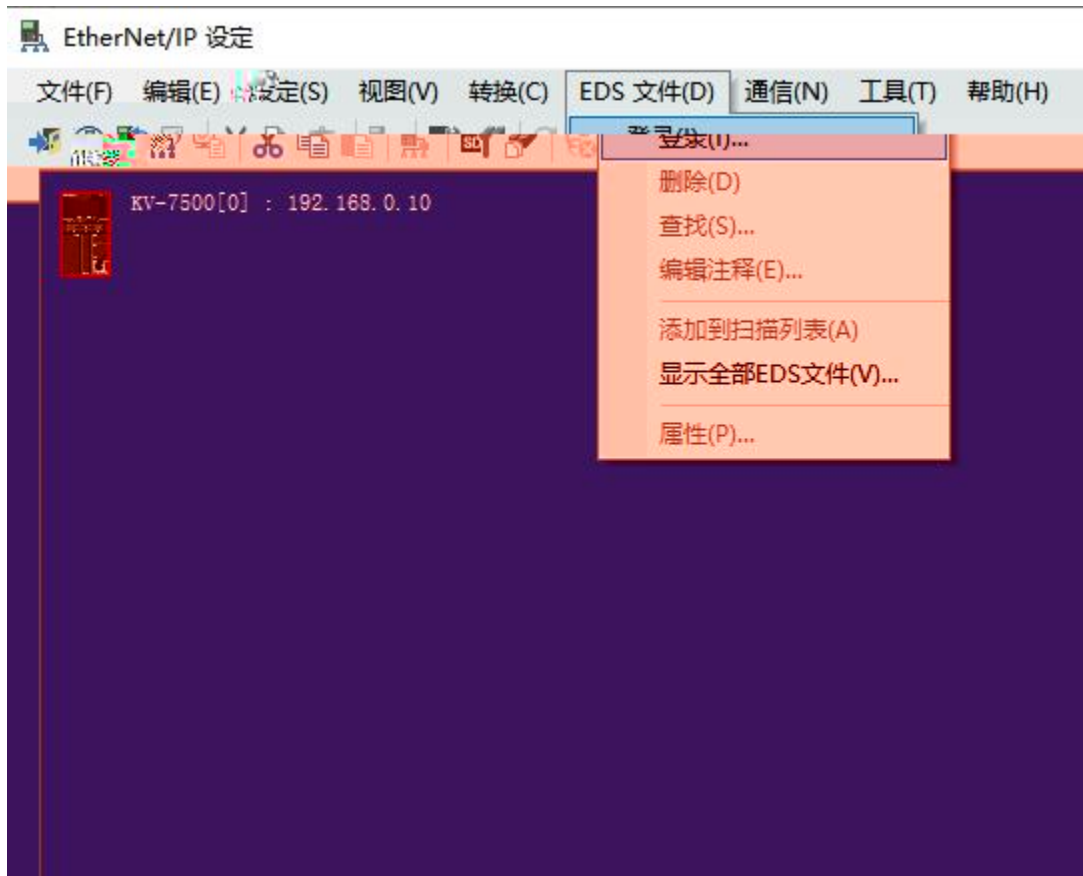
扫描时间: 5 :S

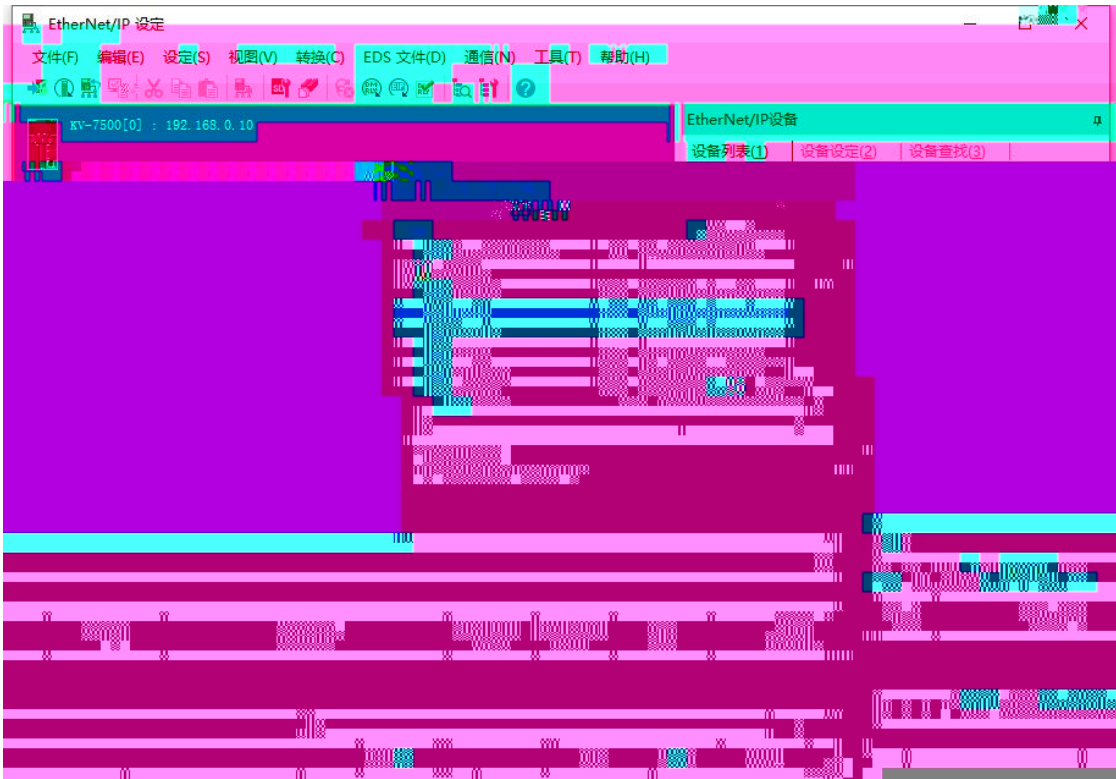
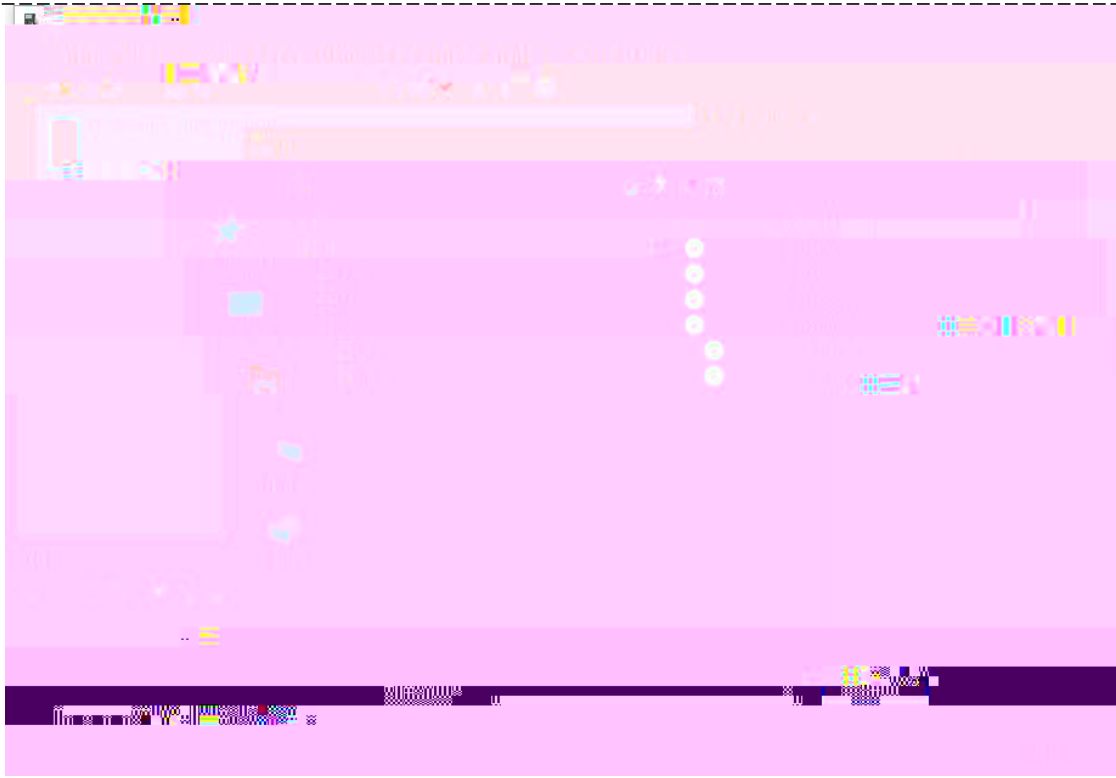
Buttons: 全局扫描, 修改IP, 恢复出厂设置, 重启模块

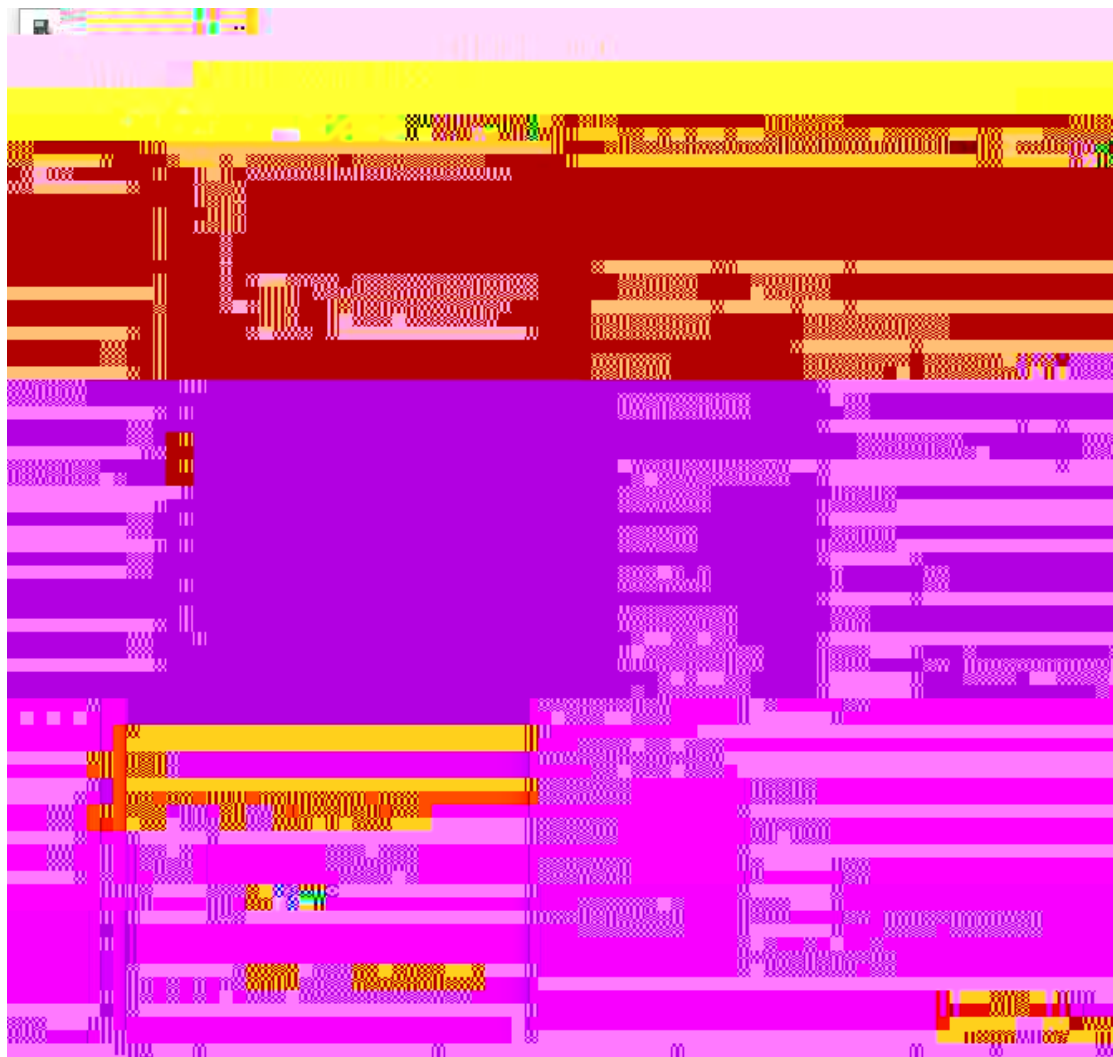
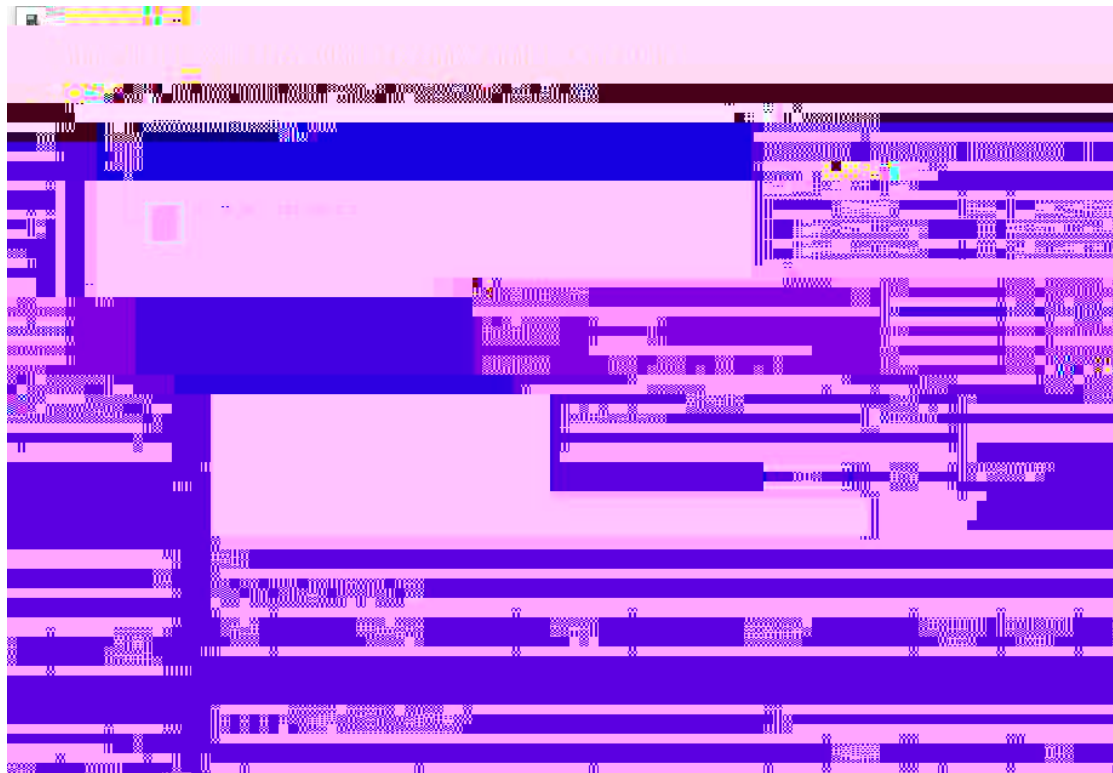
扫描进行中: 100%





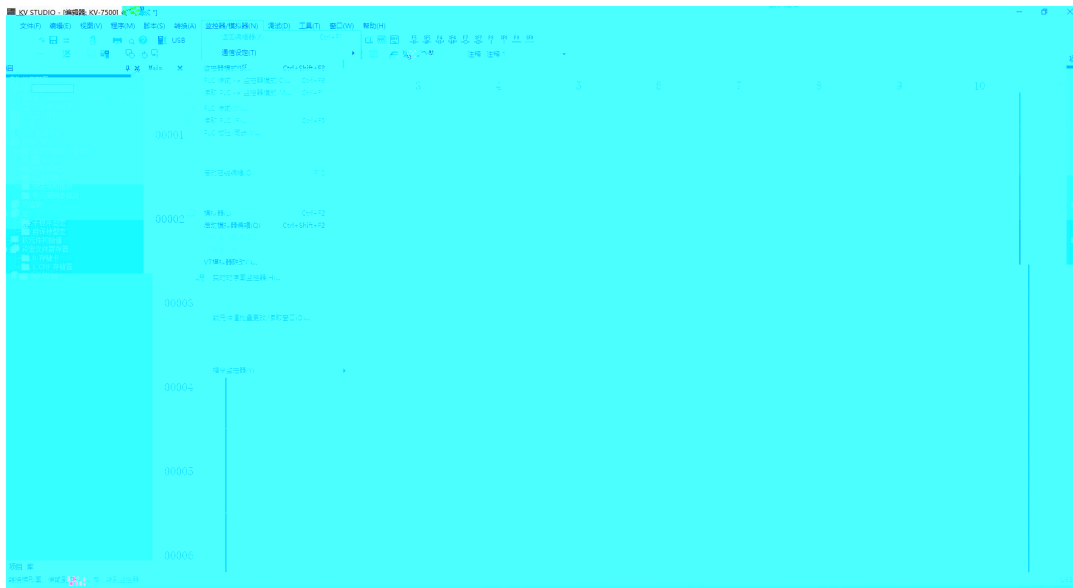








I_SIZE(byte)	O_Size(byte)	C_Size(byte)





凌科自研
LATLOS

342662462@163.com

